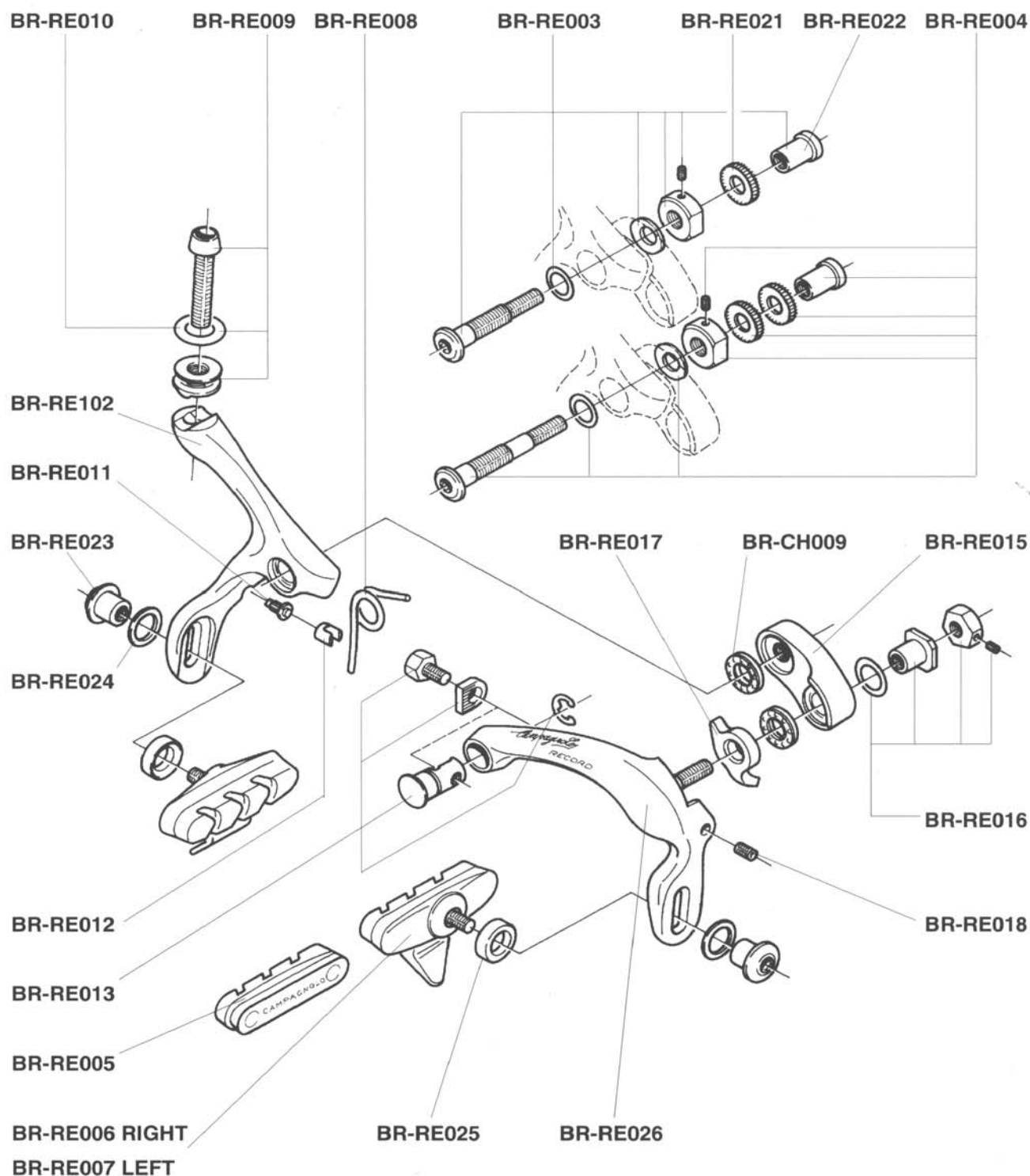


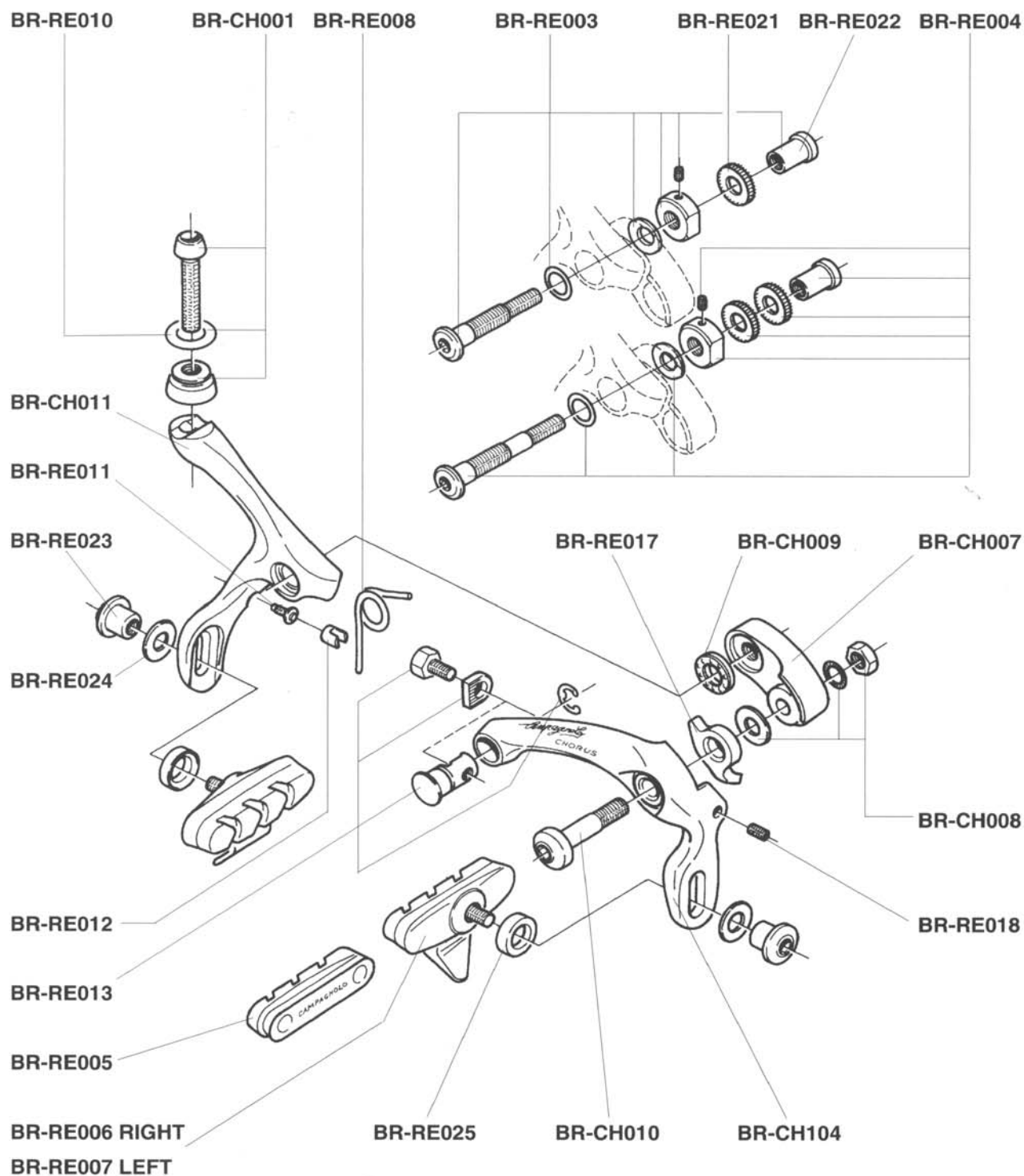


RECORD BR-14RE



Campagnolo

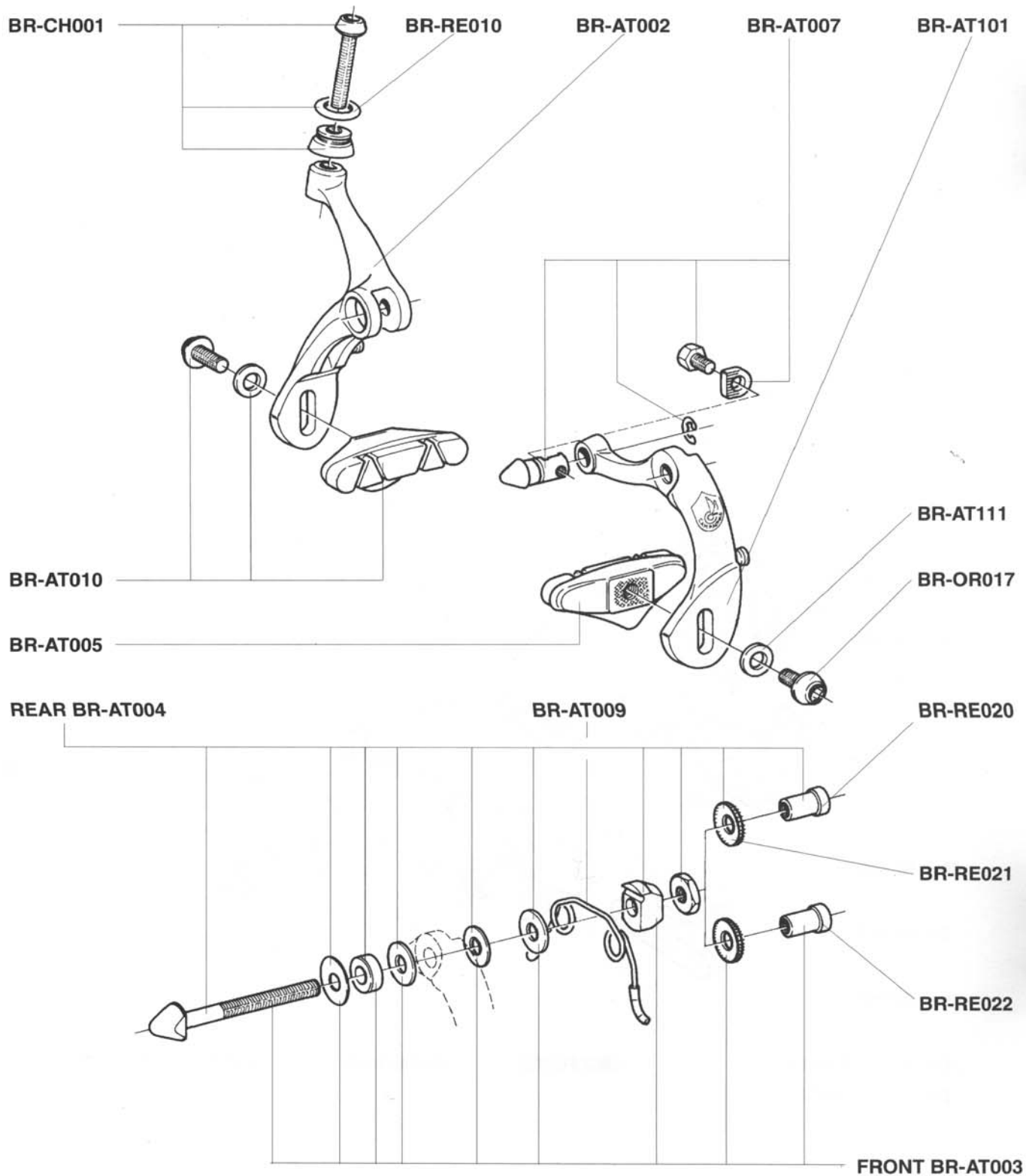
CHORUS BR-22CH



Campagnolo

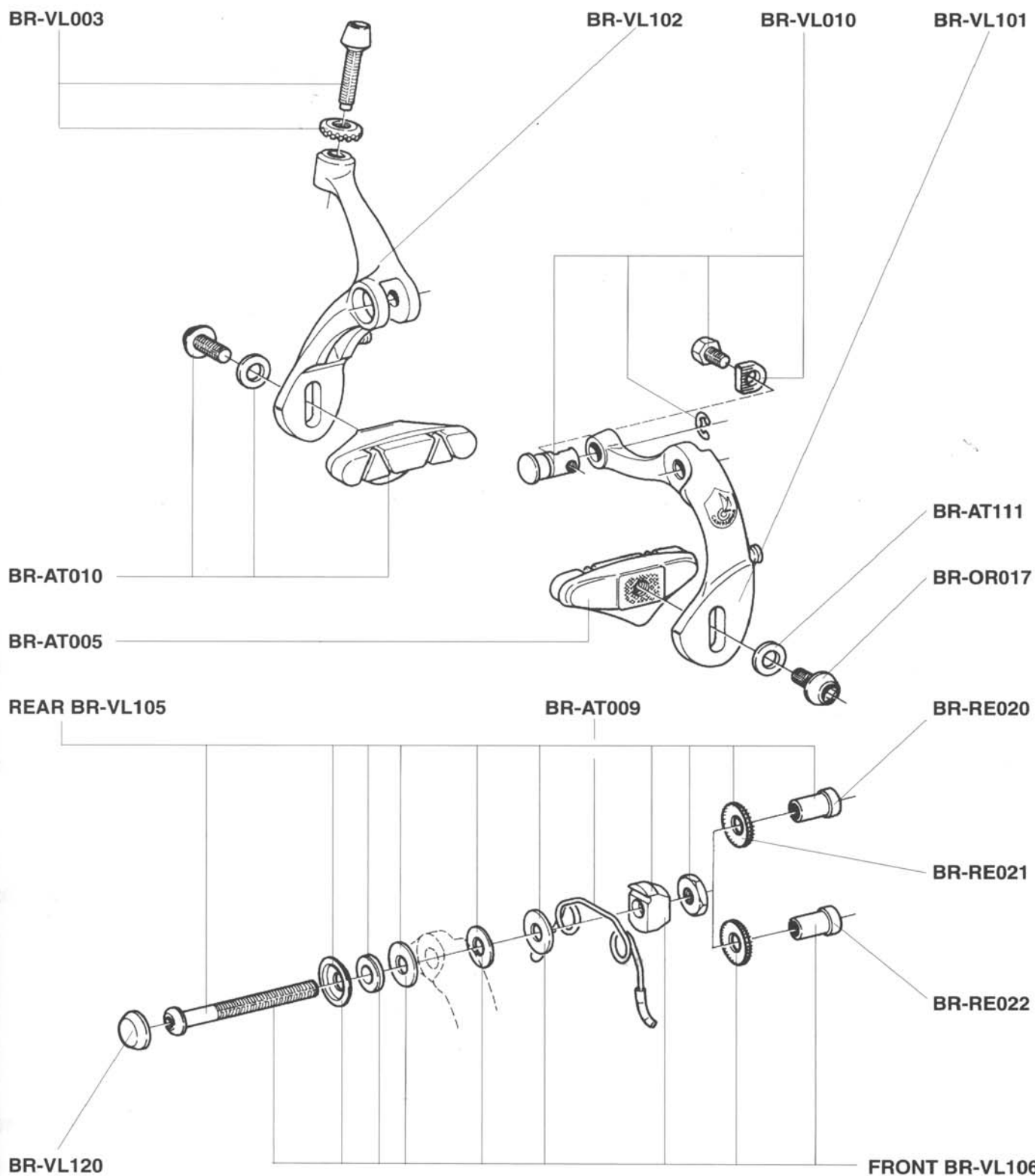


ATHENA BR-22AT



Campagnolo

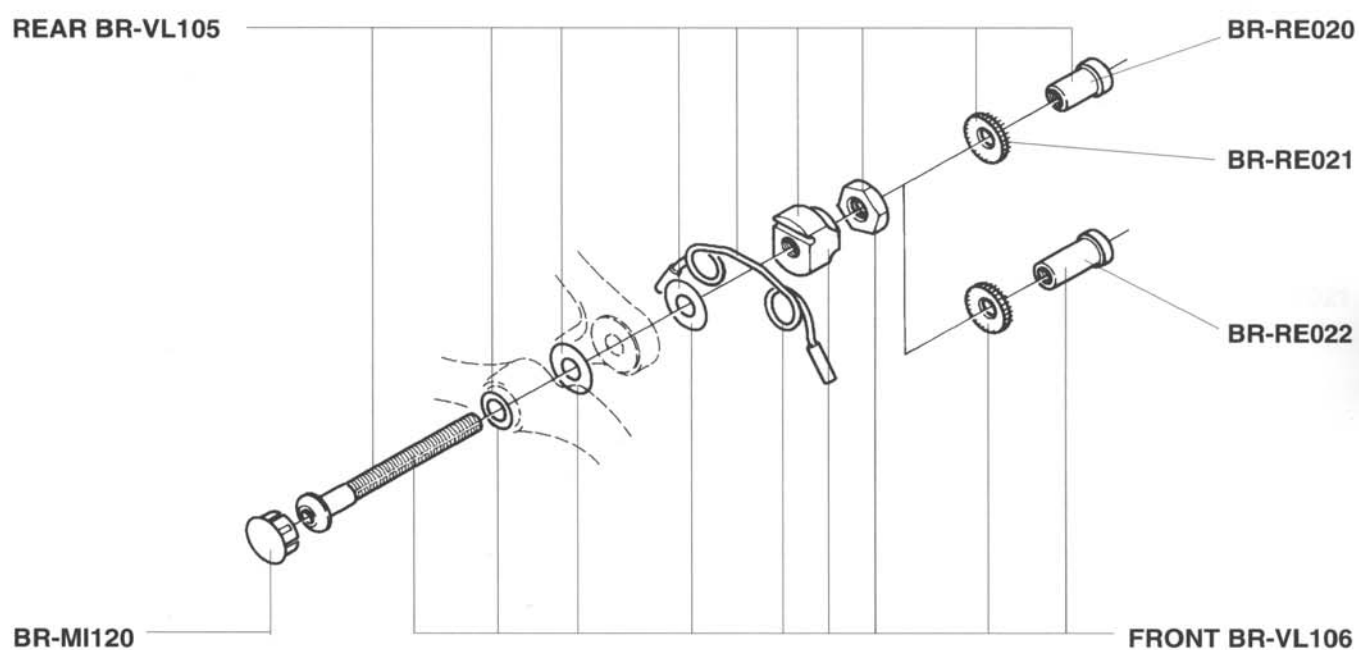
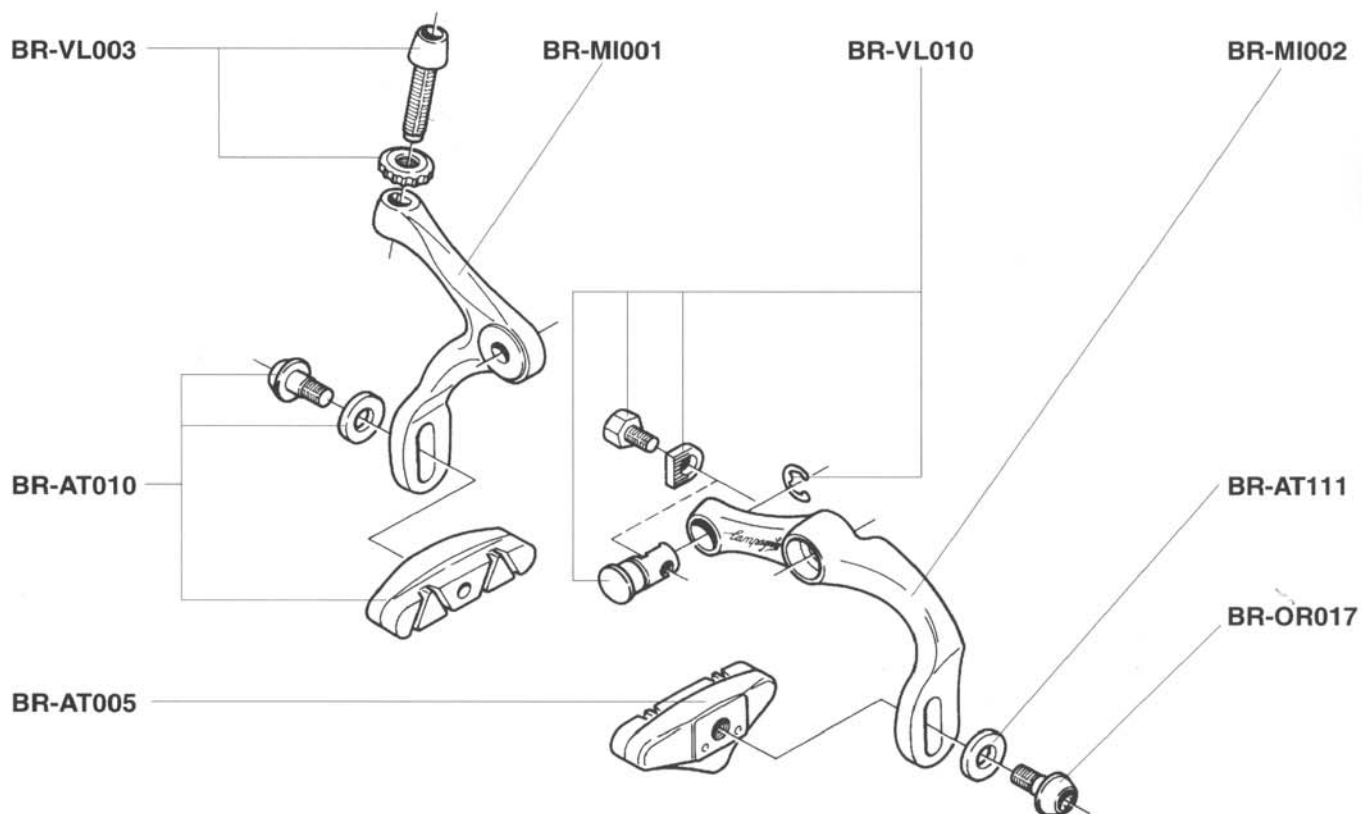
VELOCE BR-12VL



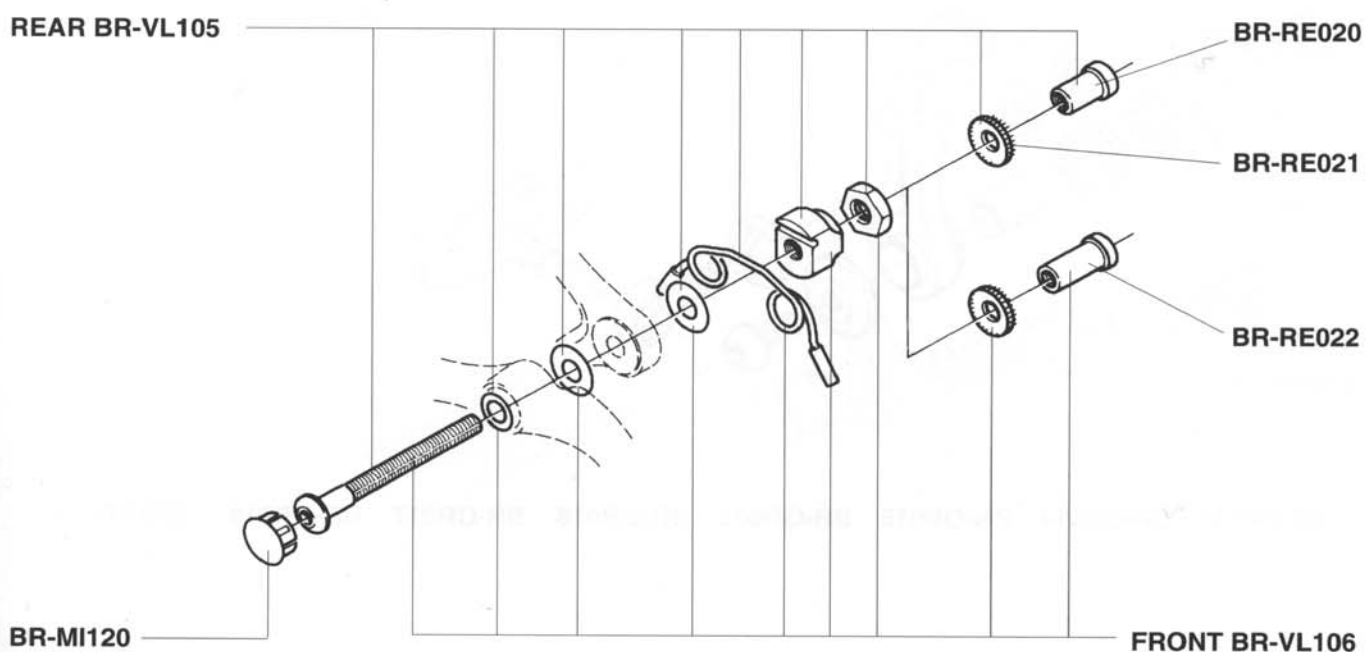
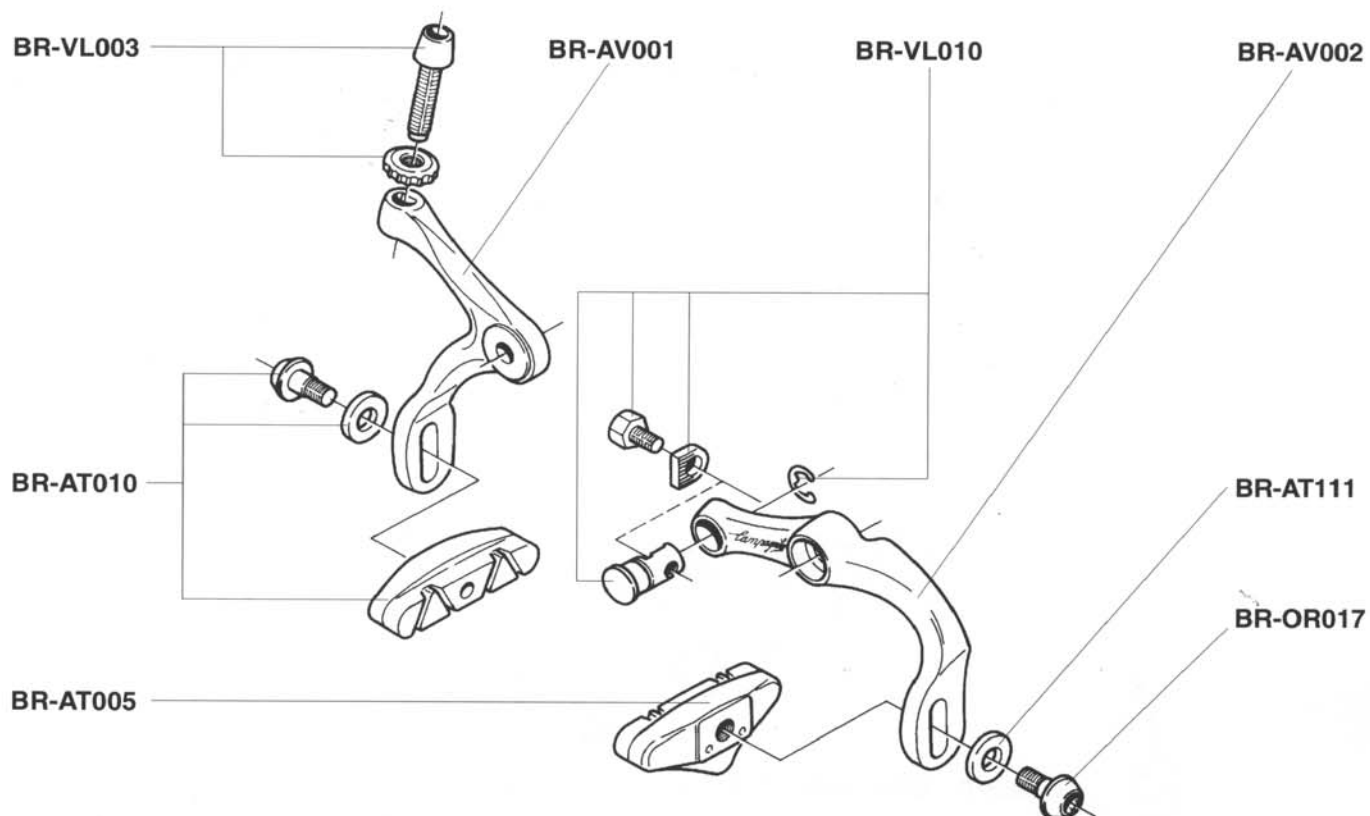
Campagnolo



MIRAGE BR-02MI



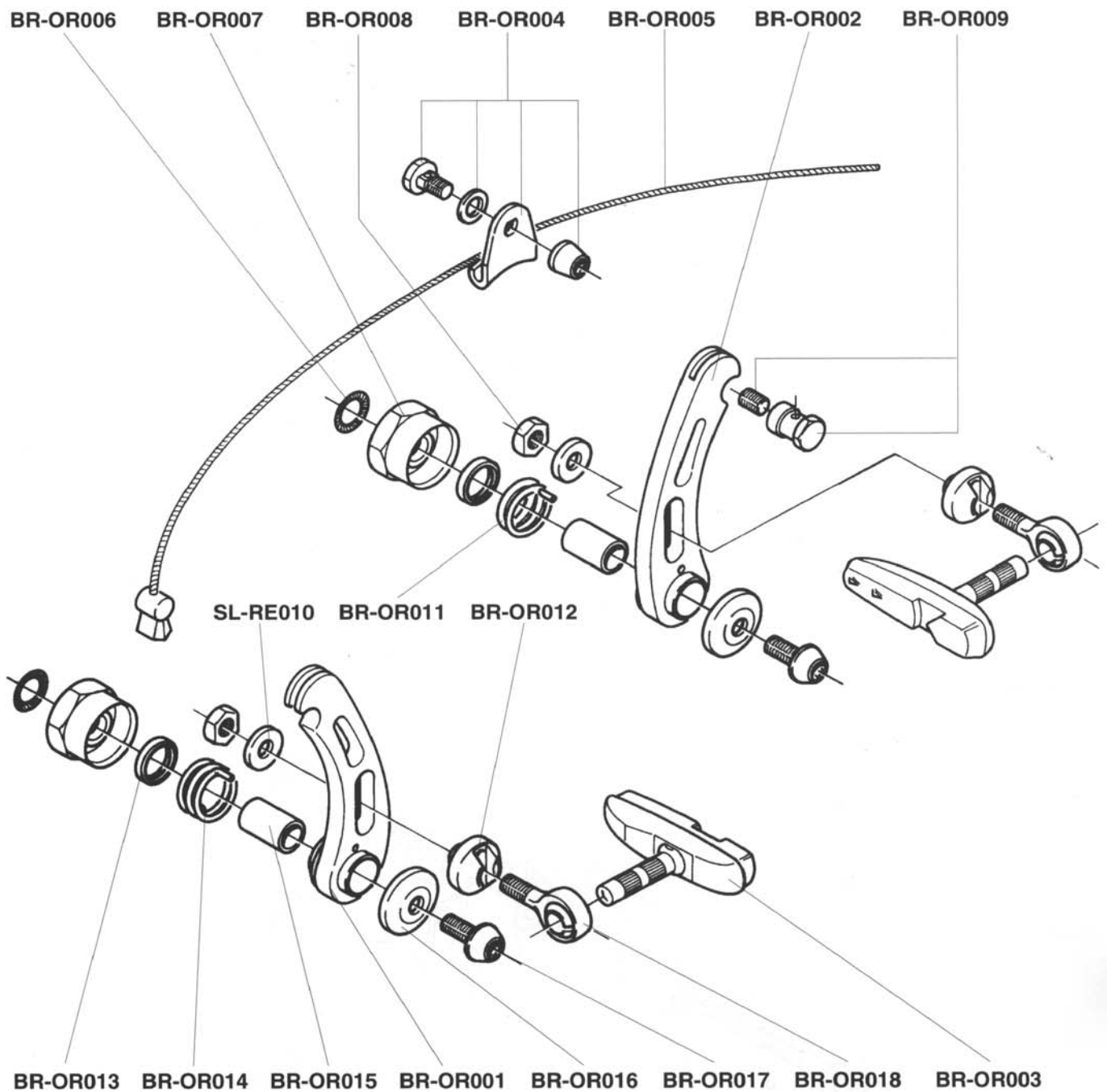
Campagnolo



Campagnolo

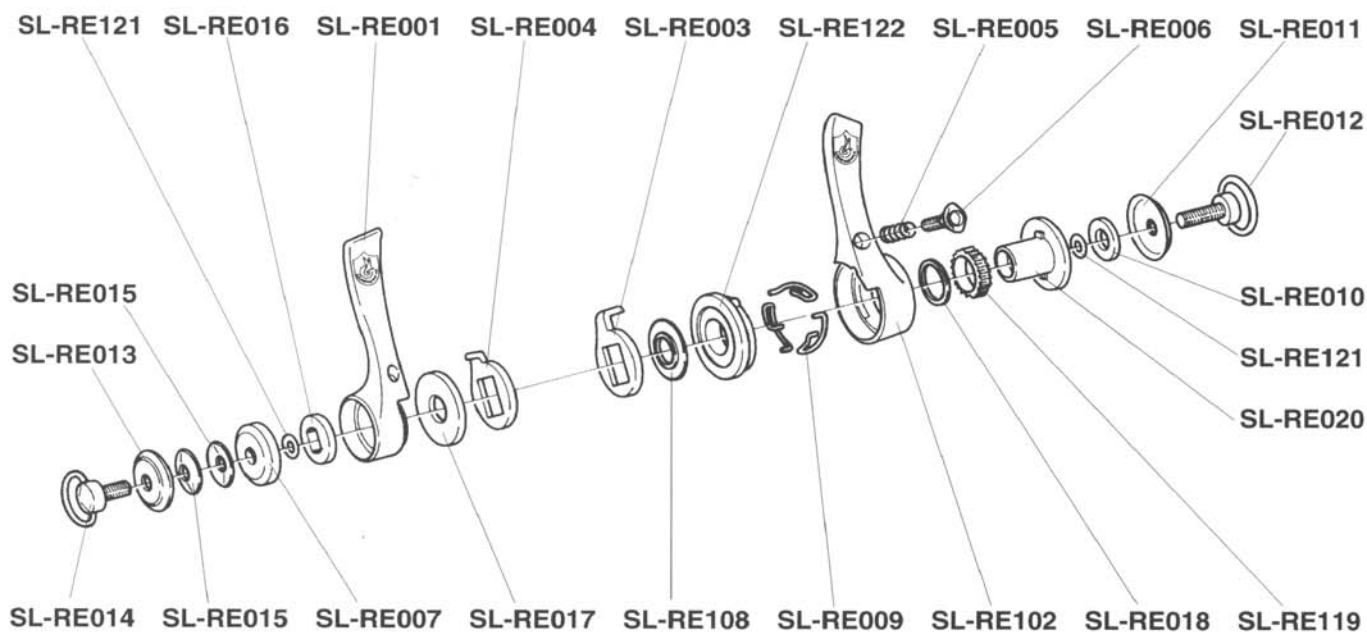


RECORD OR BR-02CLTDIC

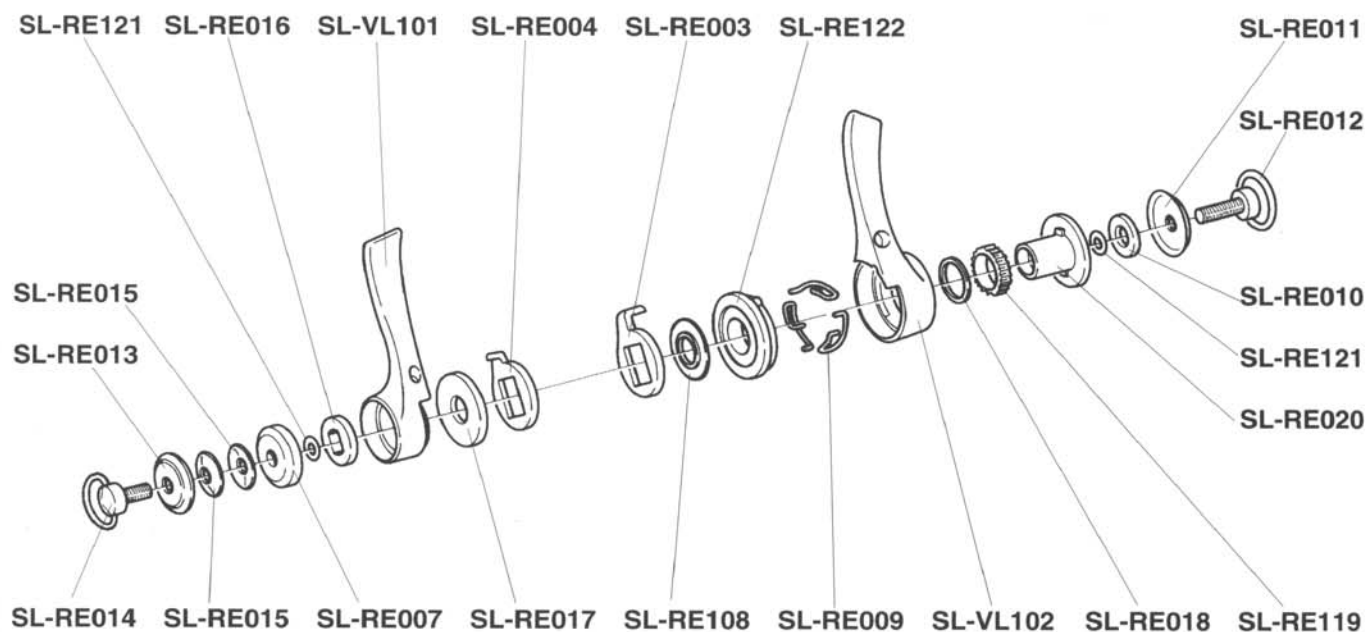


Campagnolo

RECORD SL-11SRECG



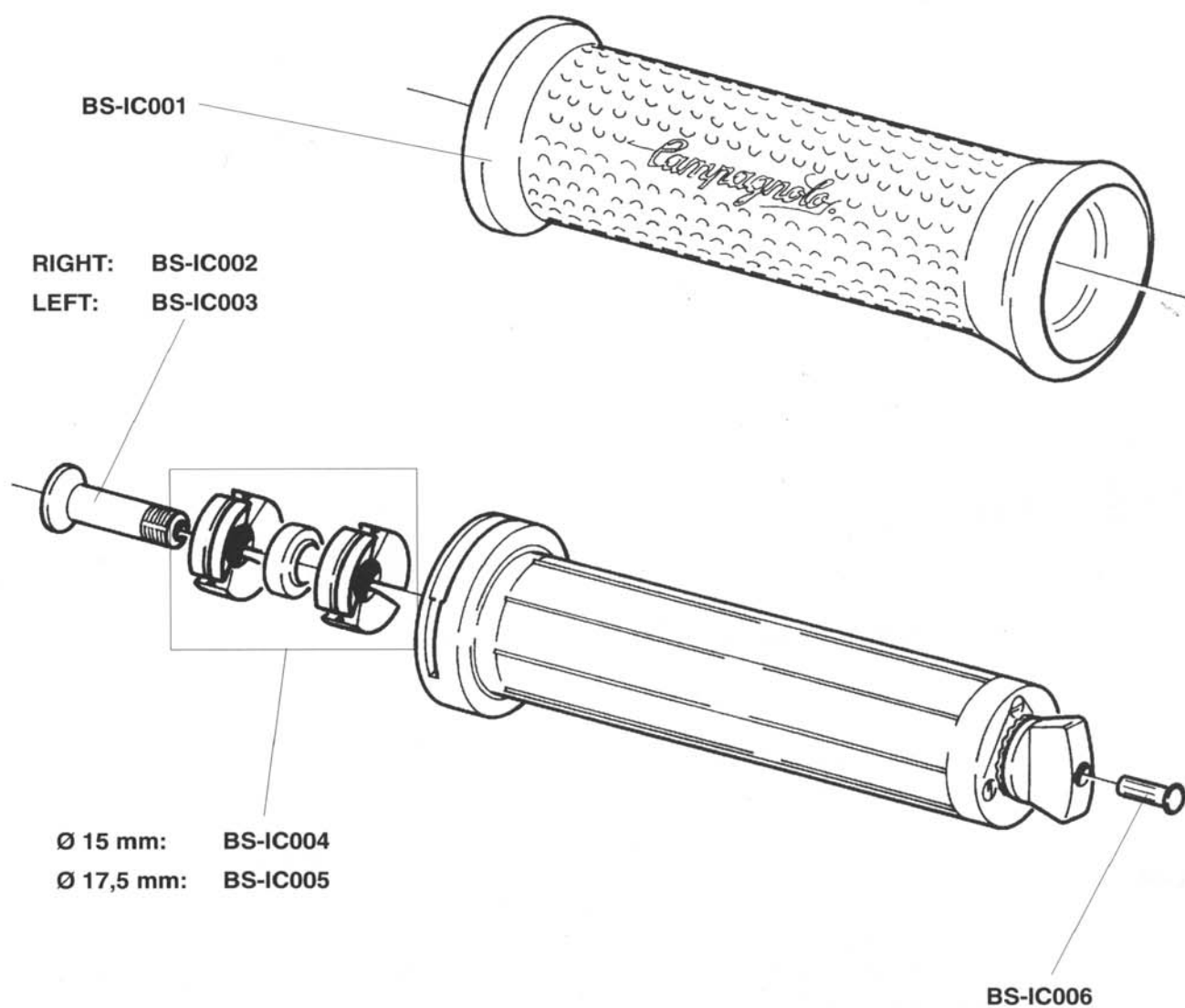
VELOCE SL-11SVLCG



Campagnolo

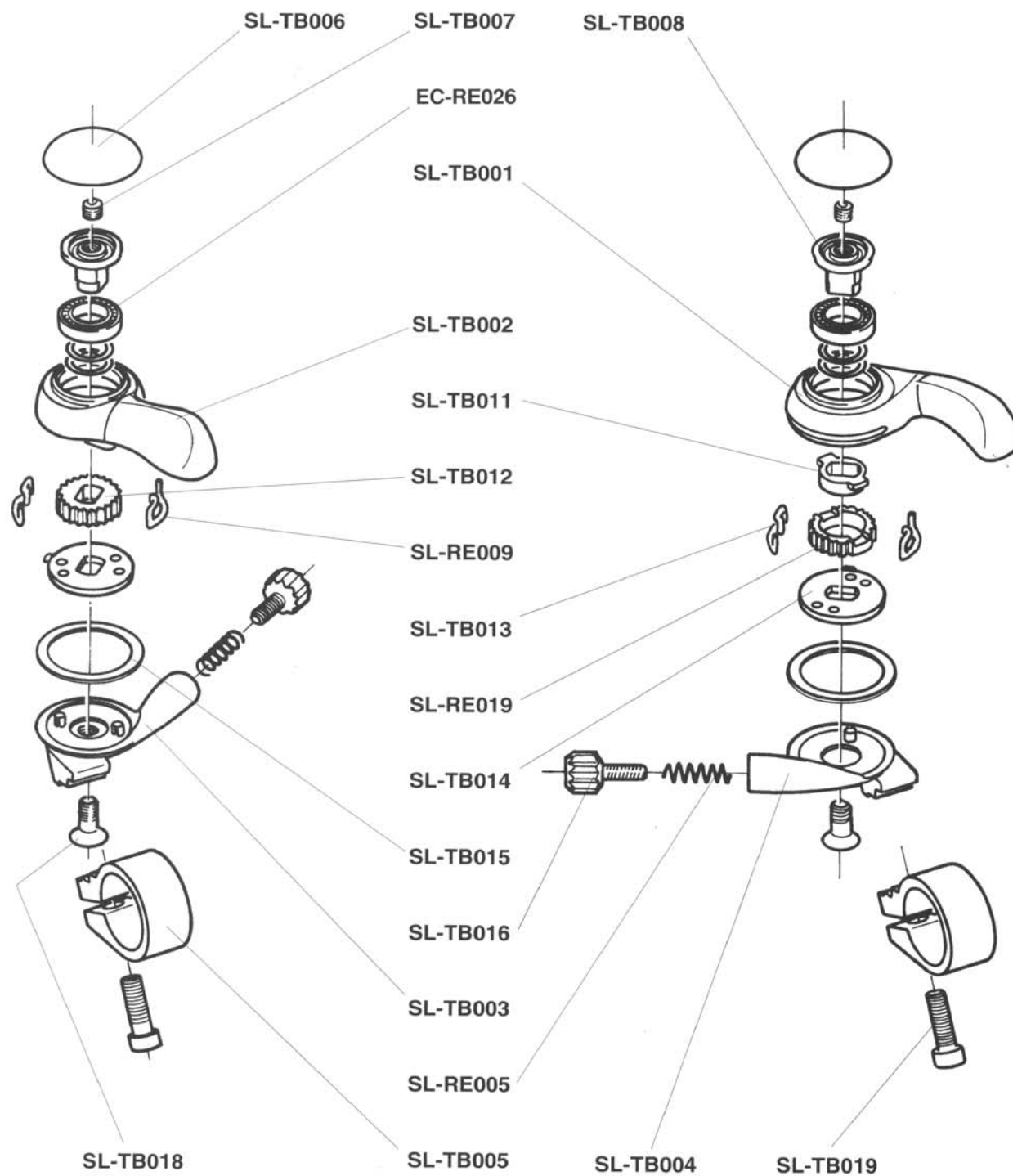
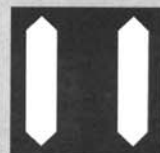


BULLET BS-02ICCG



Campagnolo

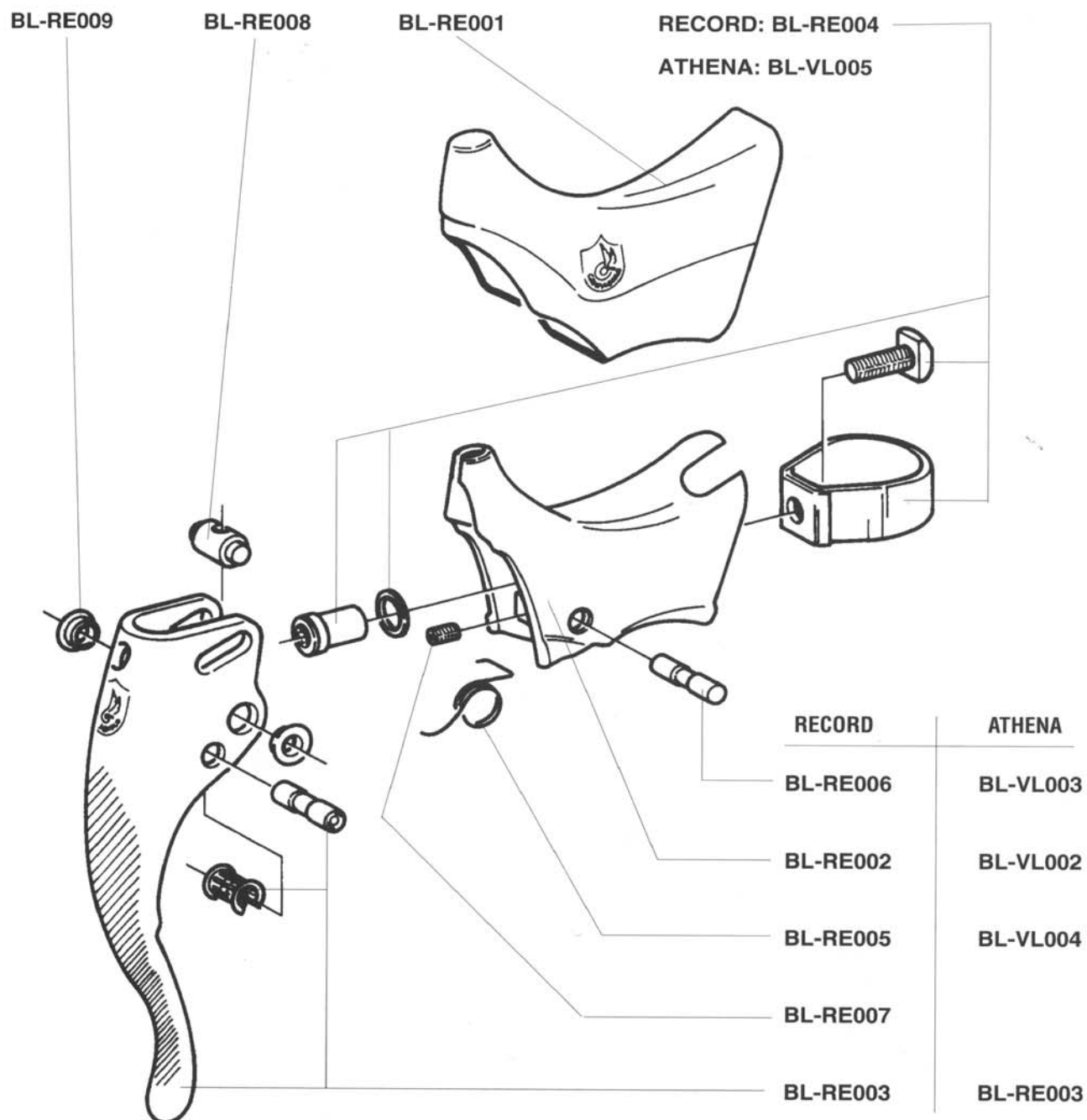
THUMBSHIFTERS SL-02TBCG



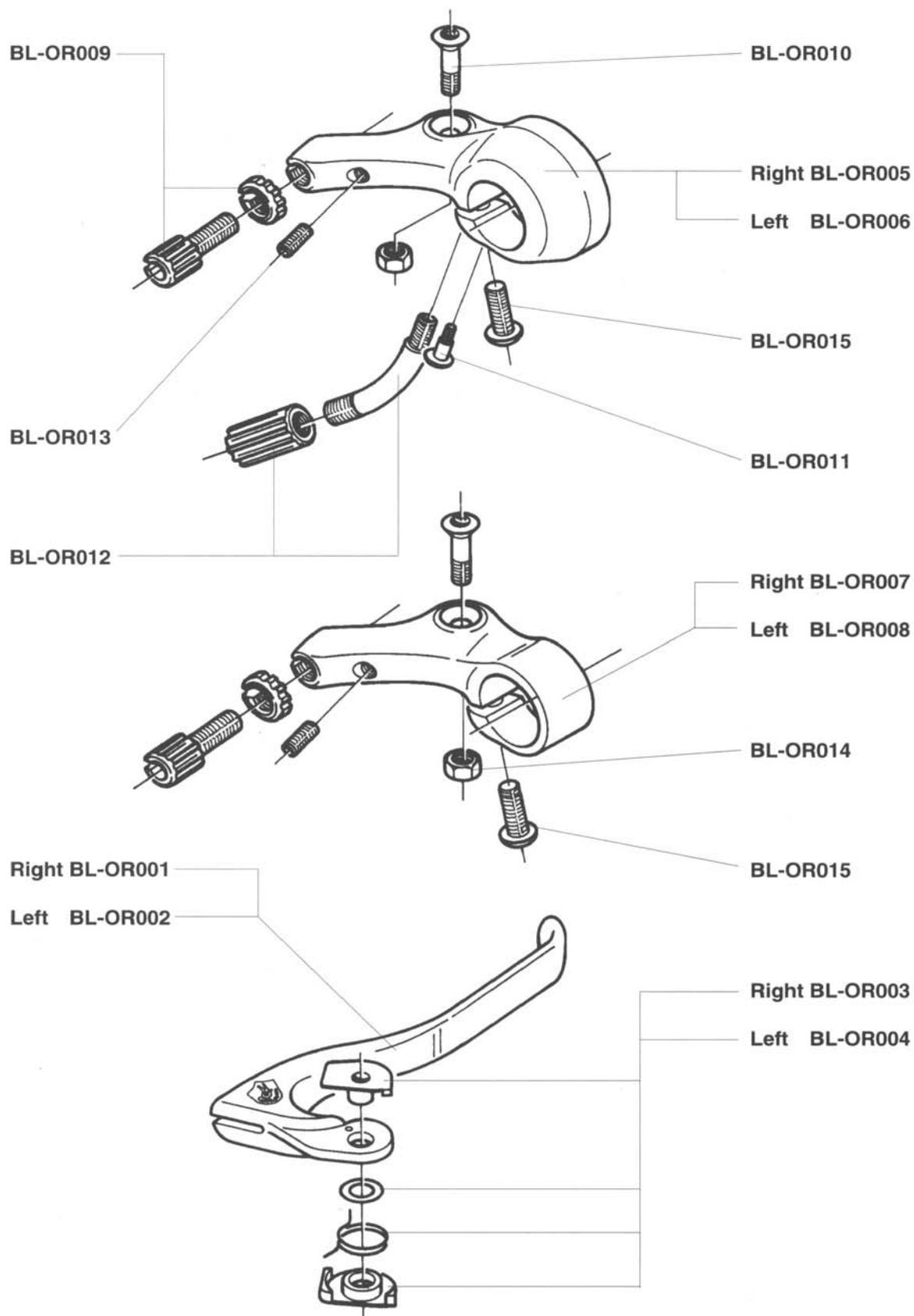
Campagnolo



RECORD - BL-12RECG **ATHENA - BL-02ATCG**



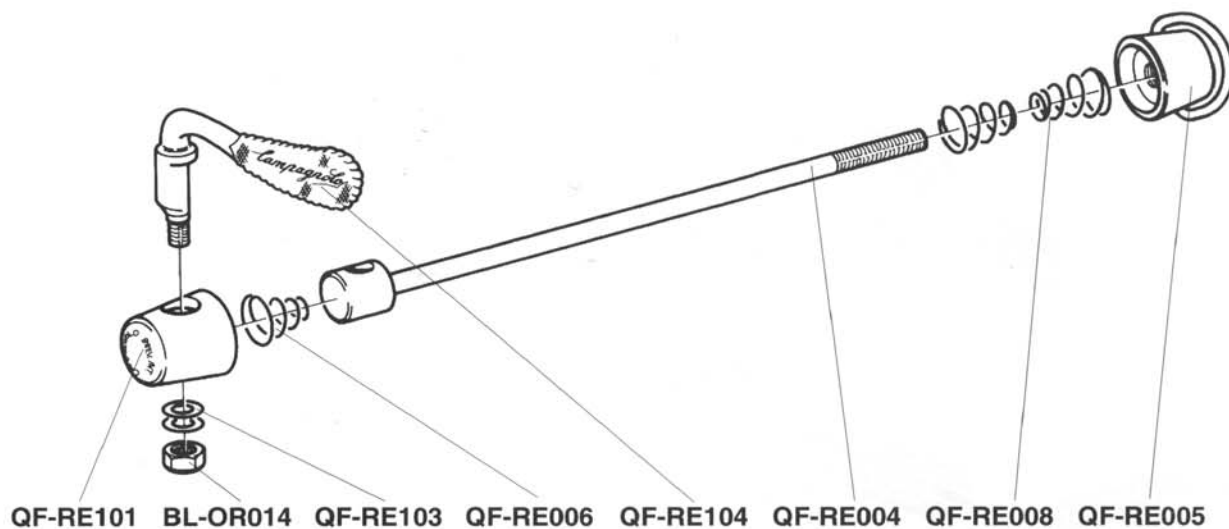
RECORD OR BL-02ORCG BL-02ORTBCG



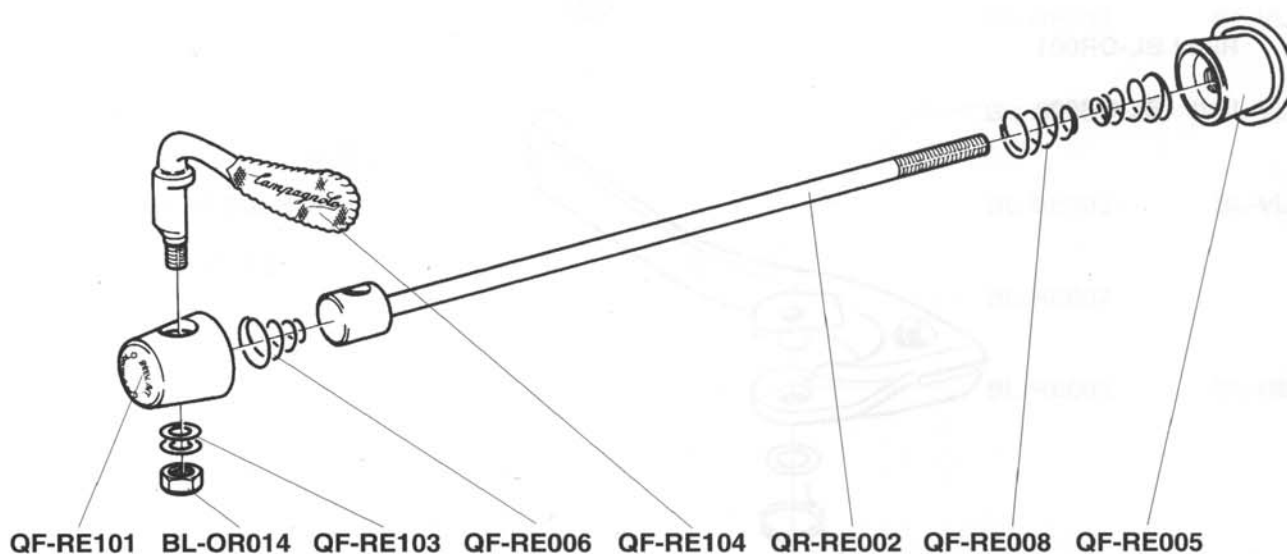
Campagnolo



RECORD - FRONT QF-RE011

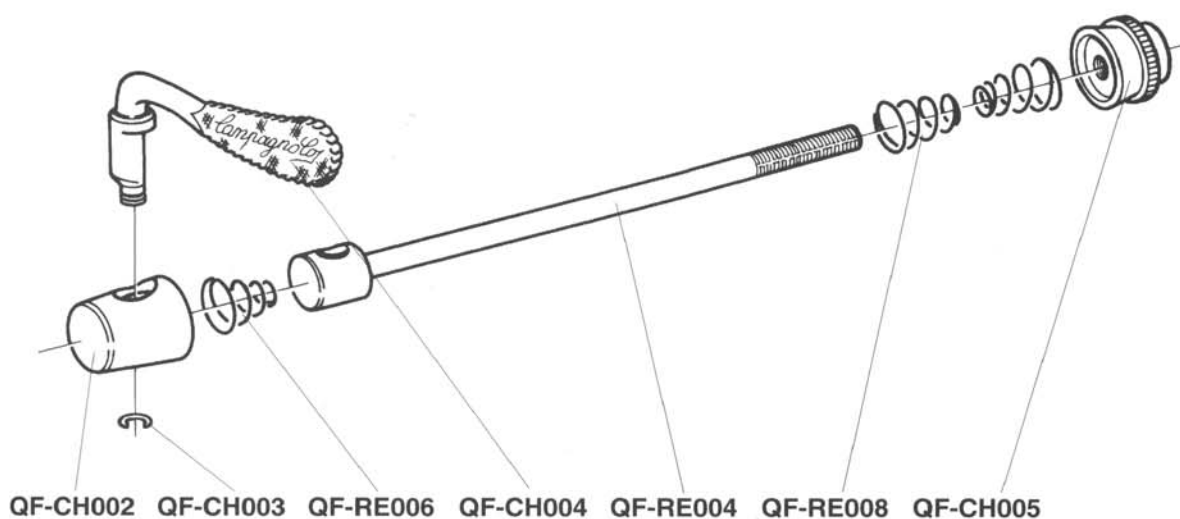


RECORD REAR QR-RE011

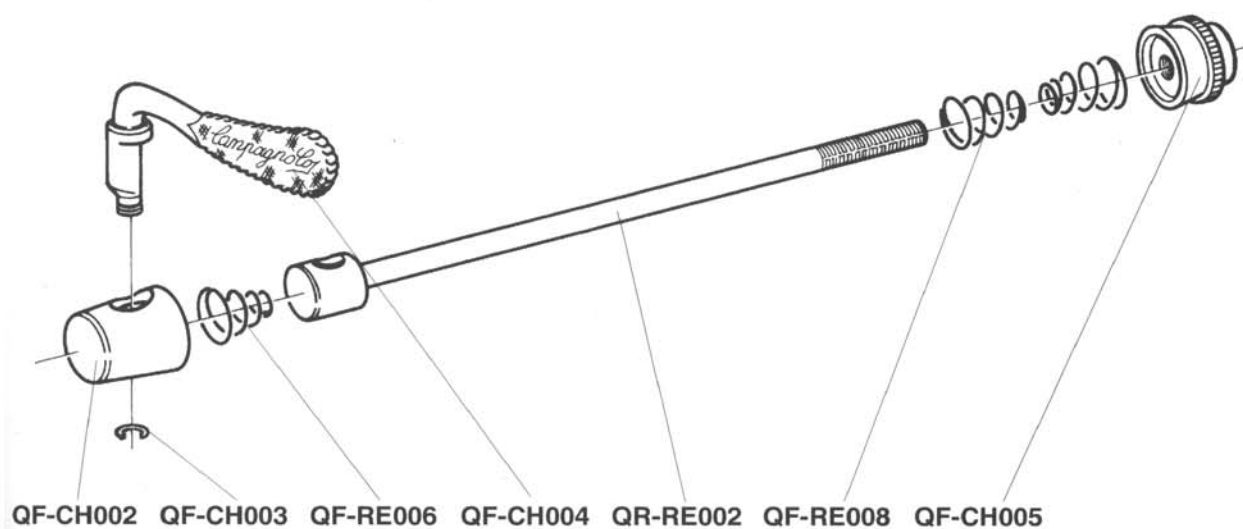


Campagnolo

CHORUS ATHENA - FRONT QF-CH001



CHORUS ATHENA - REAR QR-CH001



Campagnolo



VELOCE - REAR
QR-VL001

54

This diagram illustrates the exploded view of a bicycle rear shock absorber assembly. The components shown include:

- Shock Body:** The main cylindrical component with a threaded section in the middle.
- Shock Piston:** A small cylindrical part that fits into the shock body.
- Shock Spring:** A coiled spring that surrounds the shock body.
- Shock Cap:** A large cylindrical cap that fits over the end of the shock body.
- Shock Pin:** A small pin that secures the shock cap.
- Shock Bush:** A small cylindrical bush that fits into the shock body.
- Shock Seal:** A small O-ring seal that fits into the shock body.
- Shock Mounting Bracket:** A bracket that fits onto the shock body, featuring a curved arm with the brand name "Campagnolo" and a textured surface.

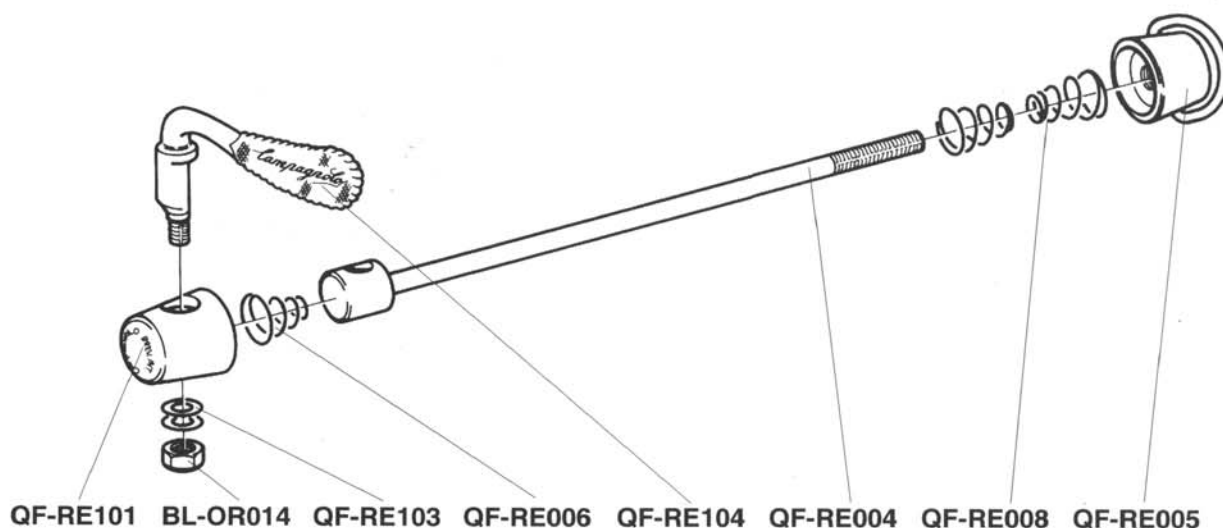
This diagram illustrates the exploded view of a bicycle rear shock absorber assembly. The components shown include:

- Shock Body:** The main cylindrical component with a threaded section on one end.
- Shock Piston:** A small cylindrical component that fits into the shock body.
- Shock Spring:** A coiled spring that surrounds the shock body.
- Shock Cap:** A cylindrical cap that fits over the end of the shock body.
- Shock Mounting Bracket:** A bracket that fits over the shock body and the shock cap.
- Shock Mounting Bolt:** A bolt that passes through the shock mounting bracket and the shock body.
- Shock Mounting Nut:** A nut that fits onto the end of the shock mounting bolt.
- Shock Mounting Washer:** A washer that fits between the shock mounting bracket and the shock body.
- Shock Mounting Spacers:** Two small cylindrical spacers that fit between the shock mounting bracket and the shock body.
- Shock Mounting Seal:** A small O-ring that fits into the shock mounting bracket.
- Shock Mounting Pin:** A small pin that fits into the shock mounting bracket.
- Shock Mounting Pin Nut:** A small nut that fits onto the end of the shock mounting pin.
- Shock Mounting Pin Washer:** A small washer that fits between the shock mounting pin and the shock mounting bracket.
- Shock Mounting Pin Seal:** A small O-ring that fits into the shock mounting pin.
- Shock Mounting Pin Nut Seal:** A small O-ring that fits into the shock mounting pin nut.
- Shock Mounting Pin Washer Seal:** A small O-ring that fits into the shock mounting pin washer.
- Shock Mounting Pin Seal Nut:** A small nut that fits onto the end of the shock mounting pin seal.
- Shock Mounting Pin Washer Nut:** A small nut that fits onto the end of the shock mounting pin washer seal.
- Shock Mounting Pin Seal Nut Seal:** A small O-ring that fits into the shock mounting pin seal nut.
- Shock Mounting Pin Washer Nut Seal:** A small O-ring that fits into the shock mounting pin washer nut seal.

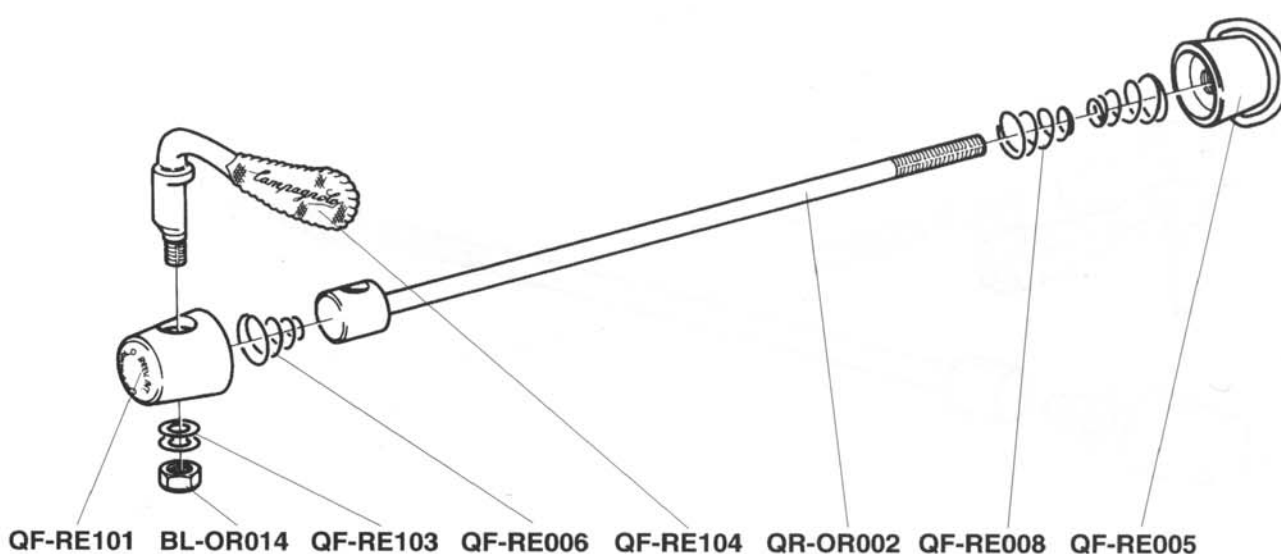
Campagnolo



RECORD OR - FRONT QF-RE011



RECORD OR - REAR QR-OR011

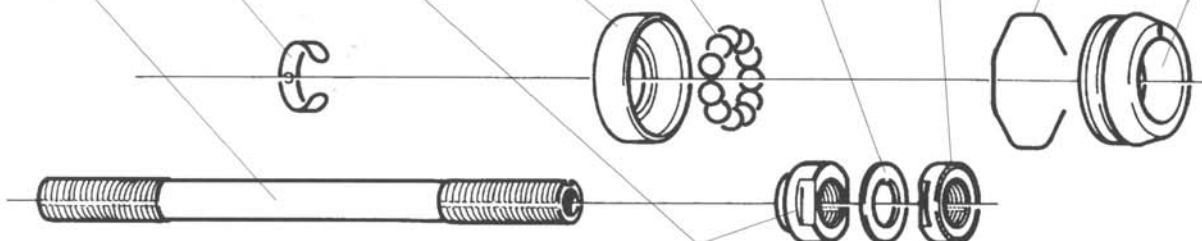


Campagnolo

RECORD HB-10RE



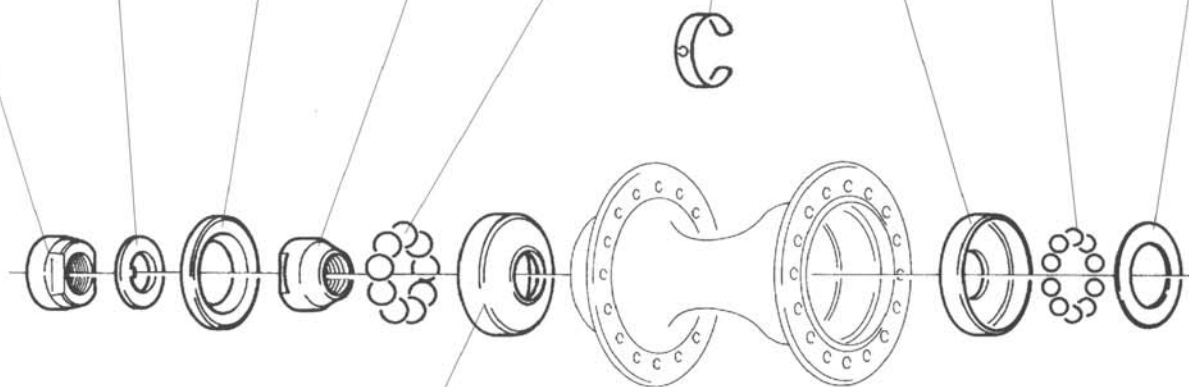
HB-RE001 HB-RE002 HB-RE005 HB-RE009 HB-RE008 HB-RE004 HB-RE003 HB-RE007 HB-RE006



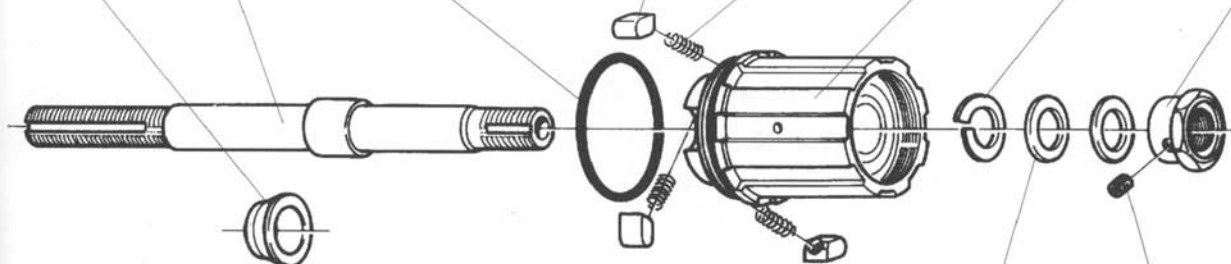
RECORD FH-20RE



FH-RE011 FH-RE109 FH-RE008 FH-RE107 FH-RE006 FH-RE002 FH-RE103 FH-RE004 FH-RE150



FH-RE110 FH-RE101 FH-RE012 FH-RE005 FH-RE013 FH-RE014 FH-RE015 FH-RE016 FH-RE020

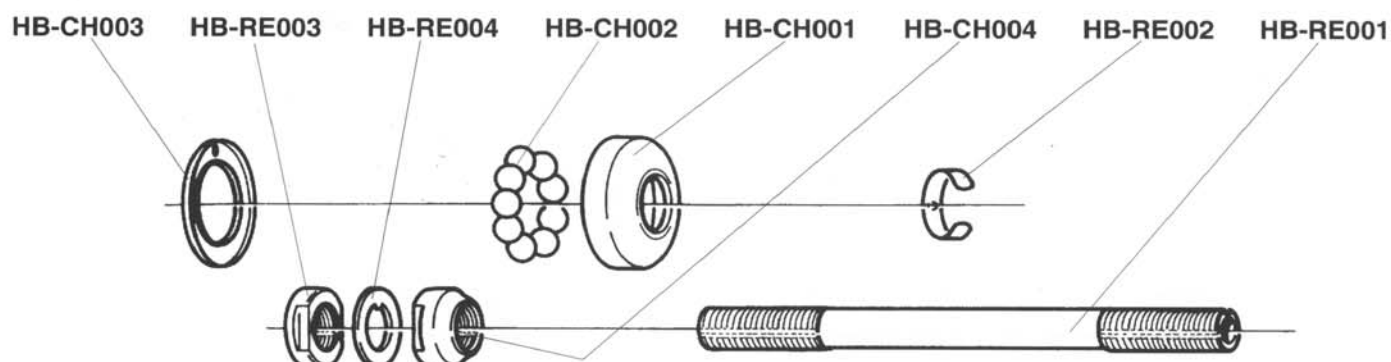


FH-RE017 FH-RE019

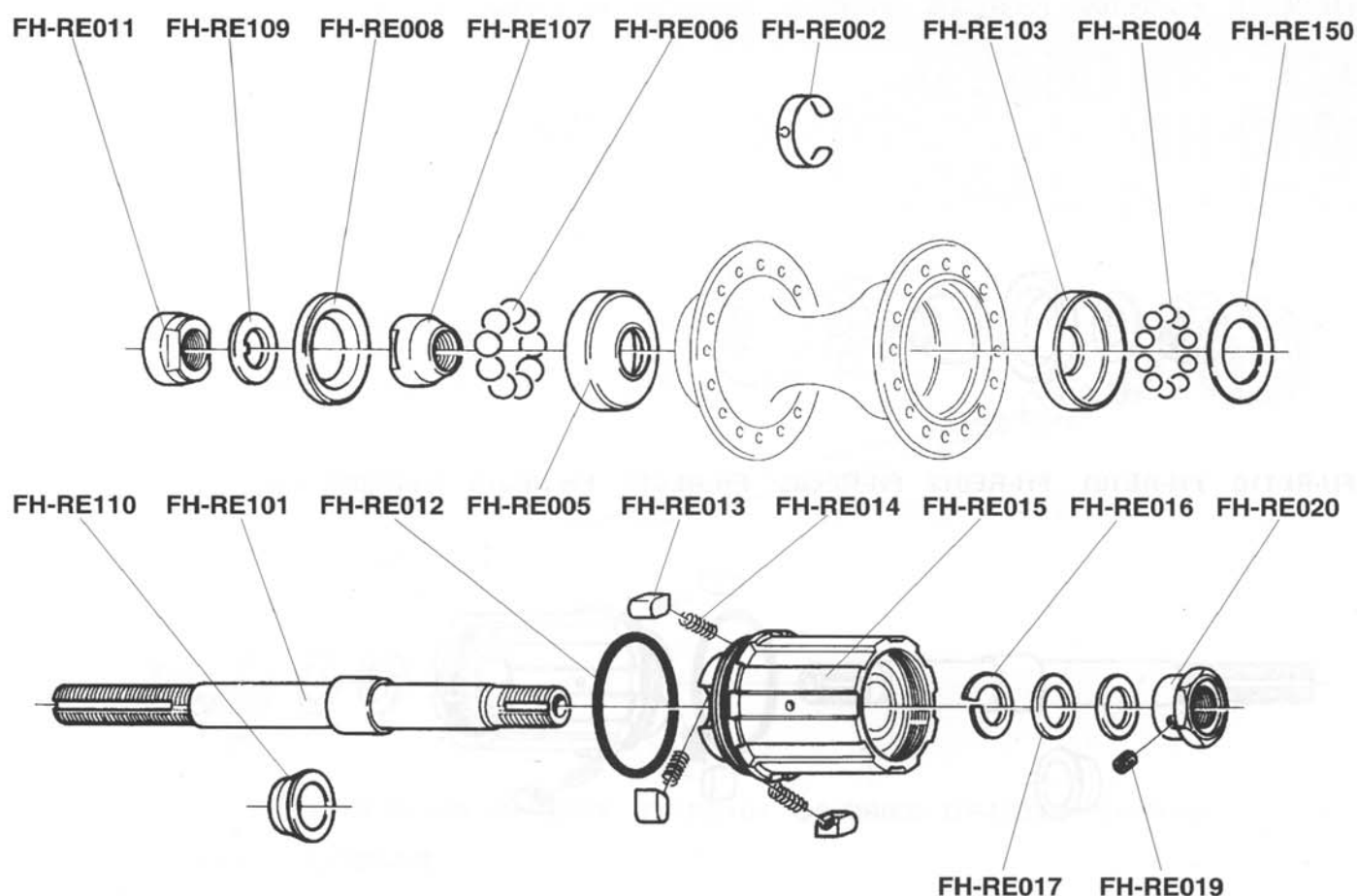
Campagnolo



CHORUS HB-00CH



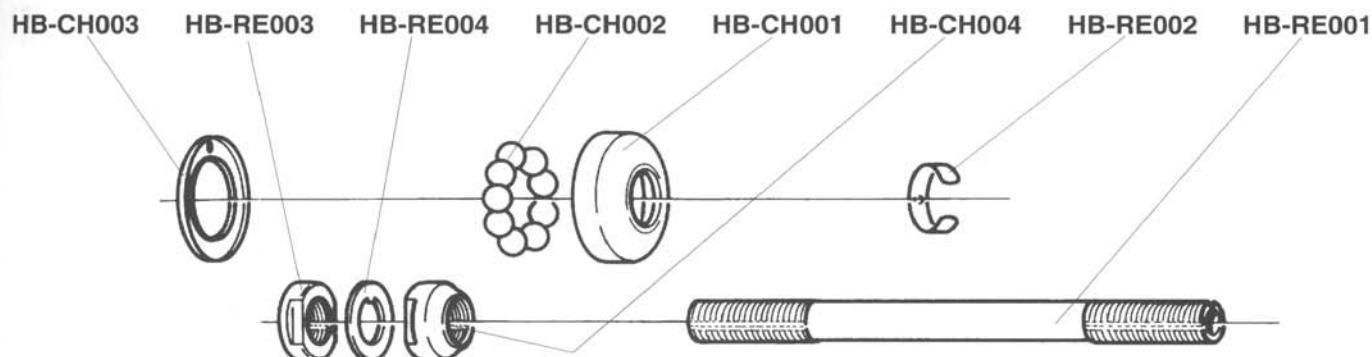
CHORUS FH-00CH



Campagnolo

**ATHENA
HB-20AT**

**VELOCE
HB-10VL**

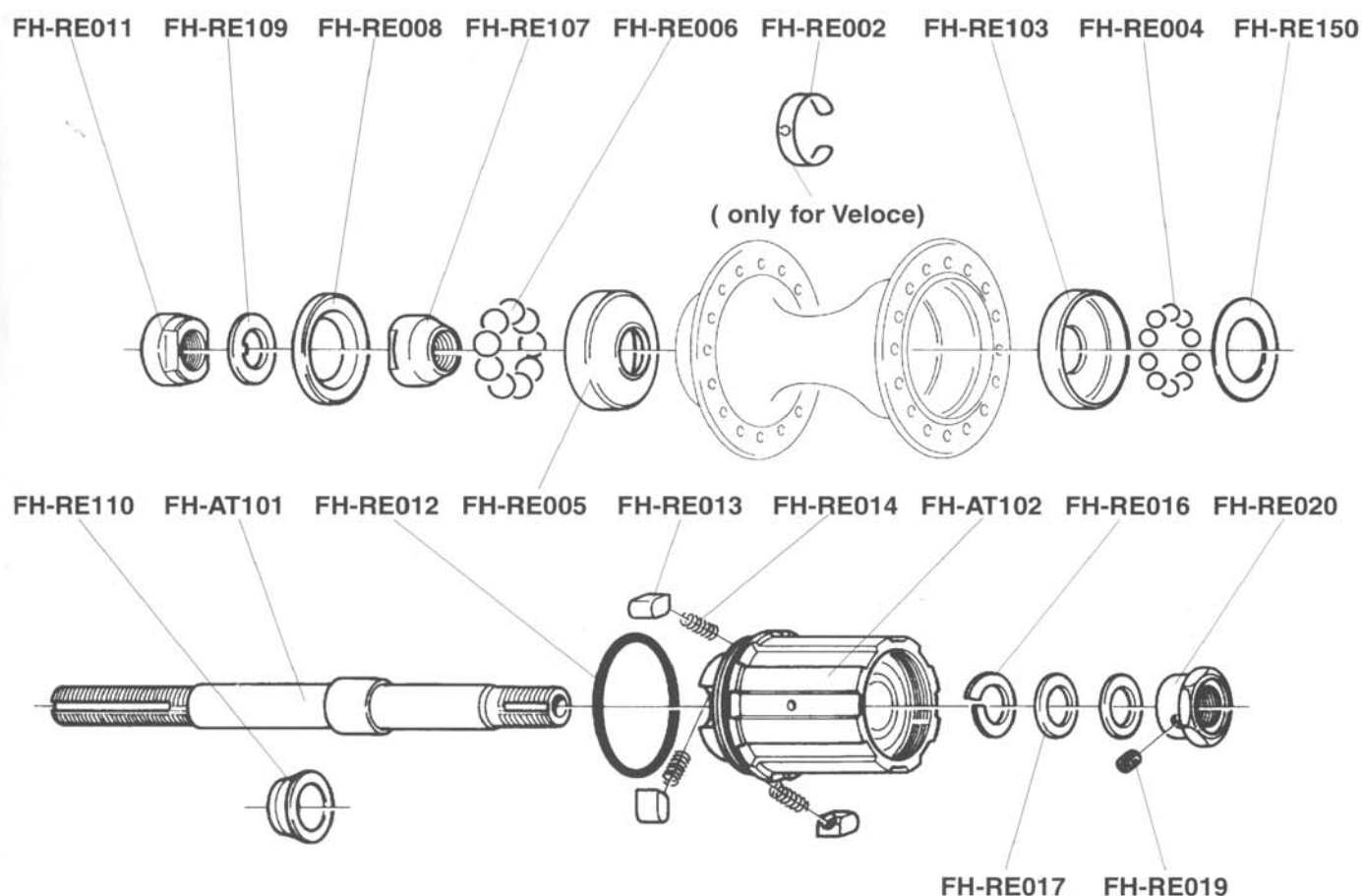


**ATHENA
FH-20AT**

**VELOCE
FH-10VL**

**MIRAGE
FH-00MI**

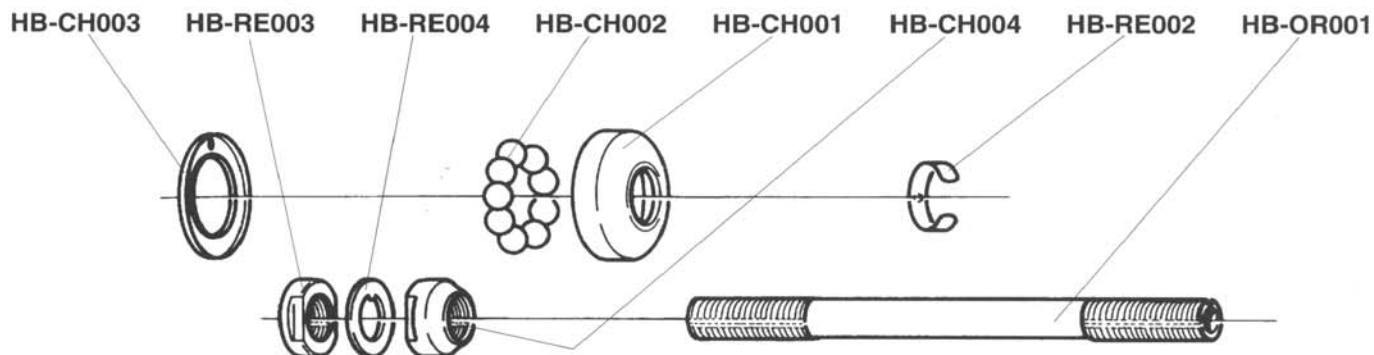
**AVANTI
FH-00AV**



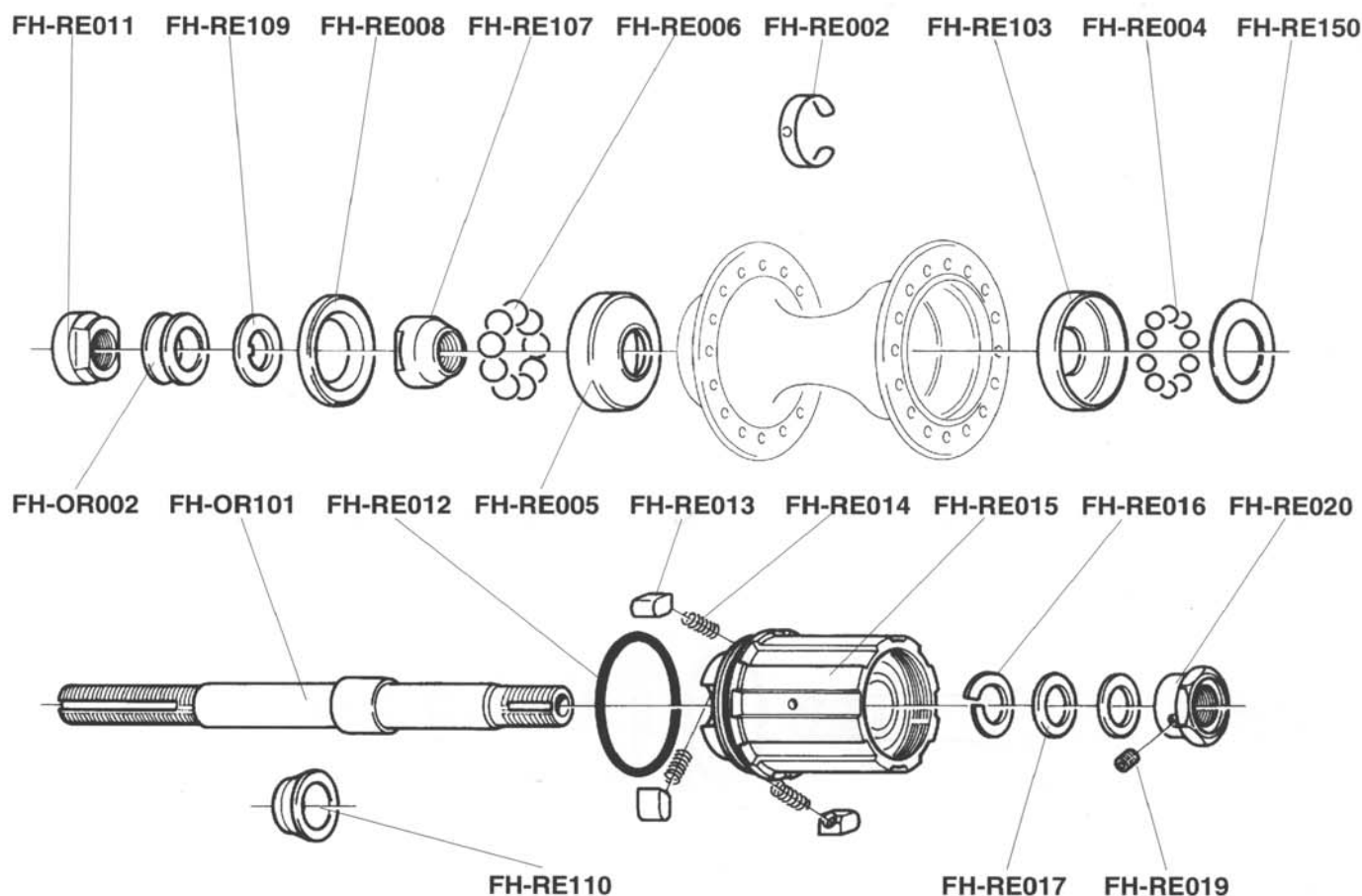
Campagnolo



RECORD OR HB-200R

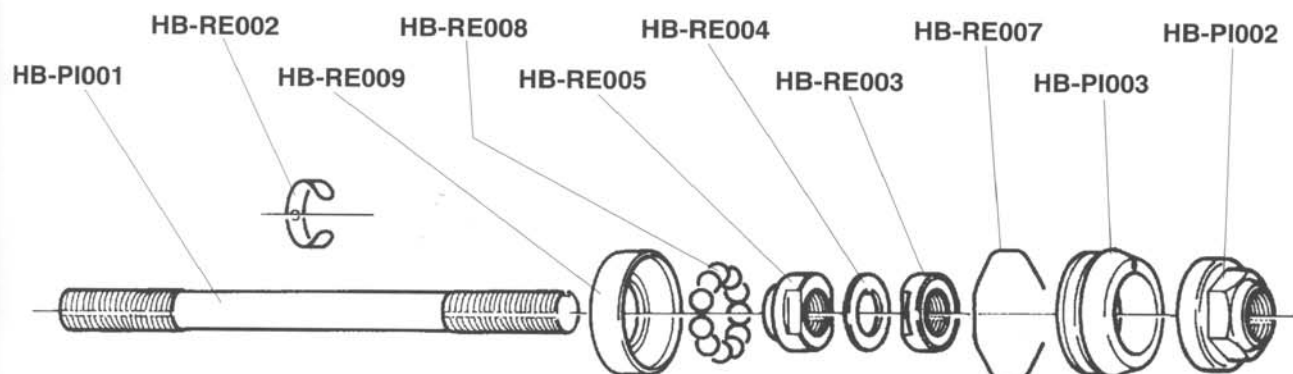


RECORD OR FH-100R

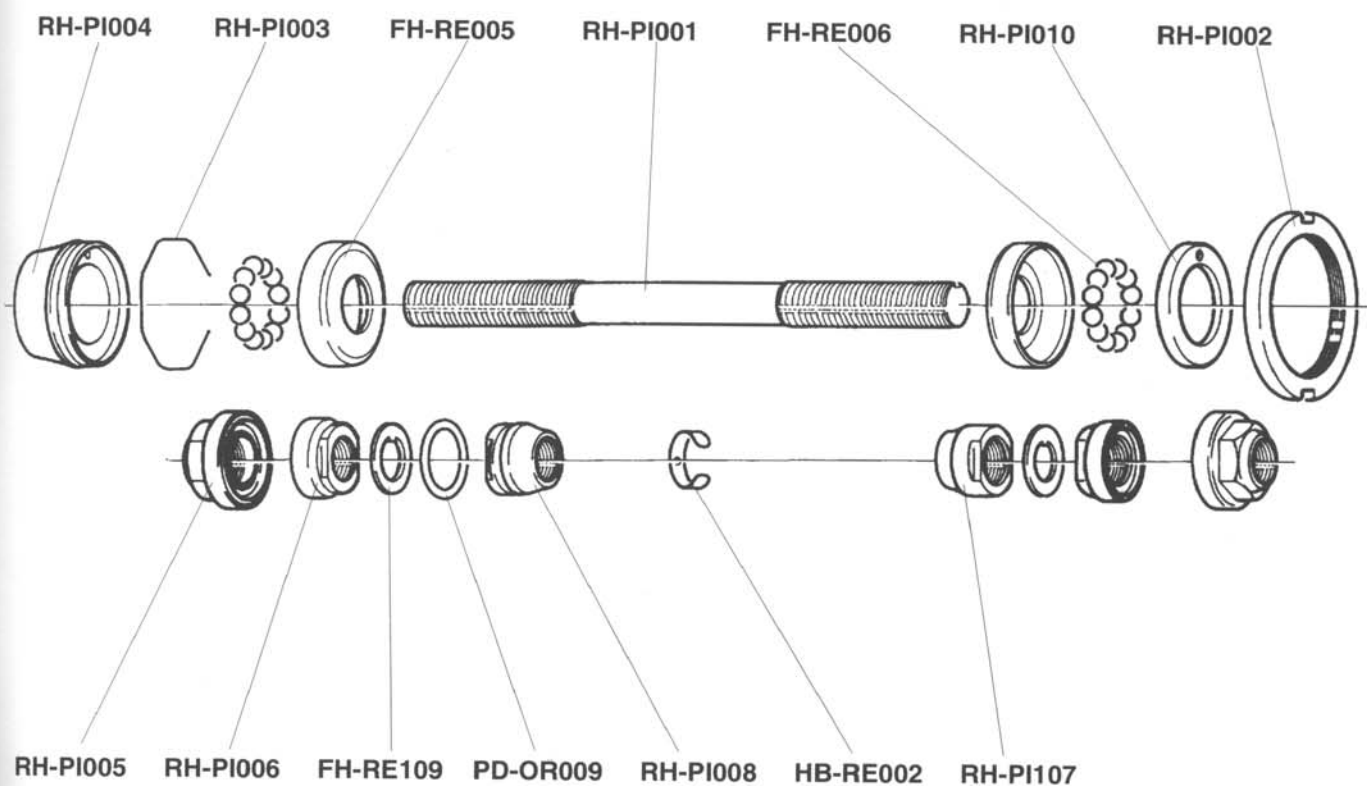


Campagnolo

RECORD PISTA HB-00PI



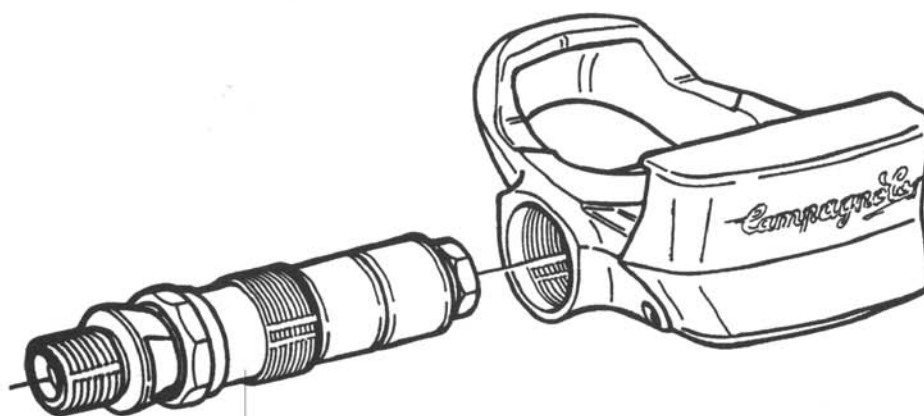
RECORD PISTA RH-00PI



Campagnolo



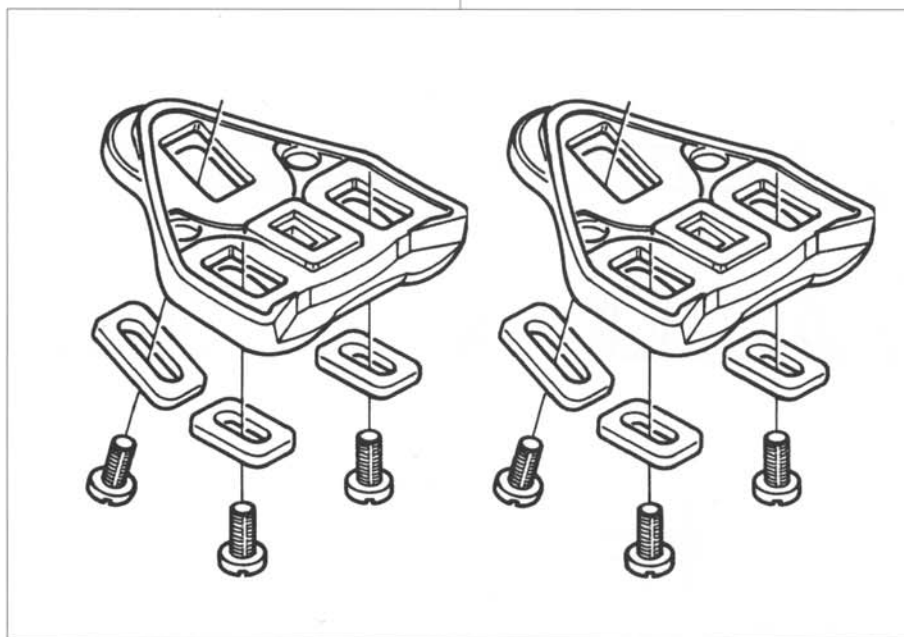
RECORD PD-32REQR



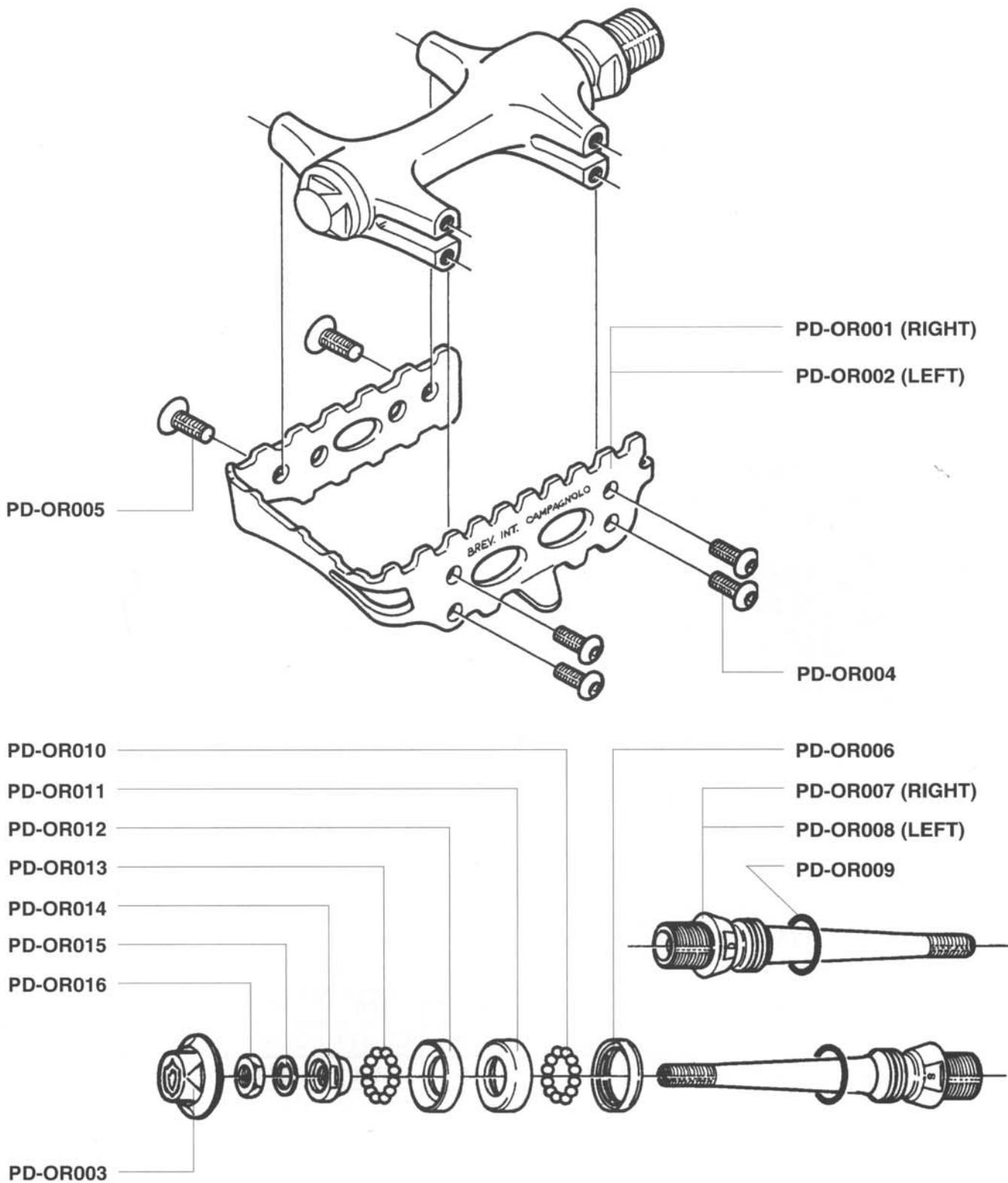
PD-RE001 (RIGHT)

PD-RE002 (LEFT)

PD-RE003



Campagnolo



Campagnolo

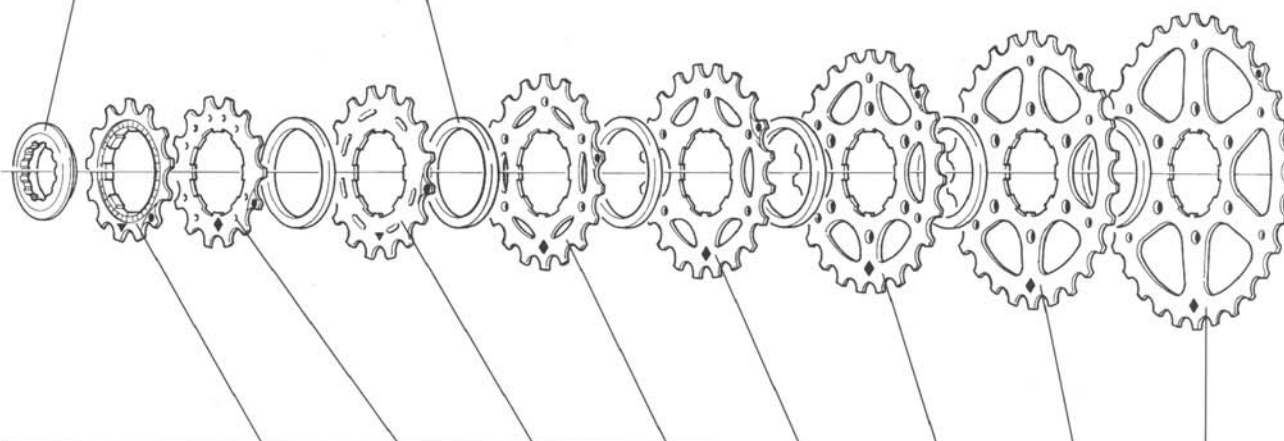


RECORD CS-18RE

CS-101 (Z11)

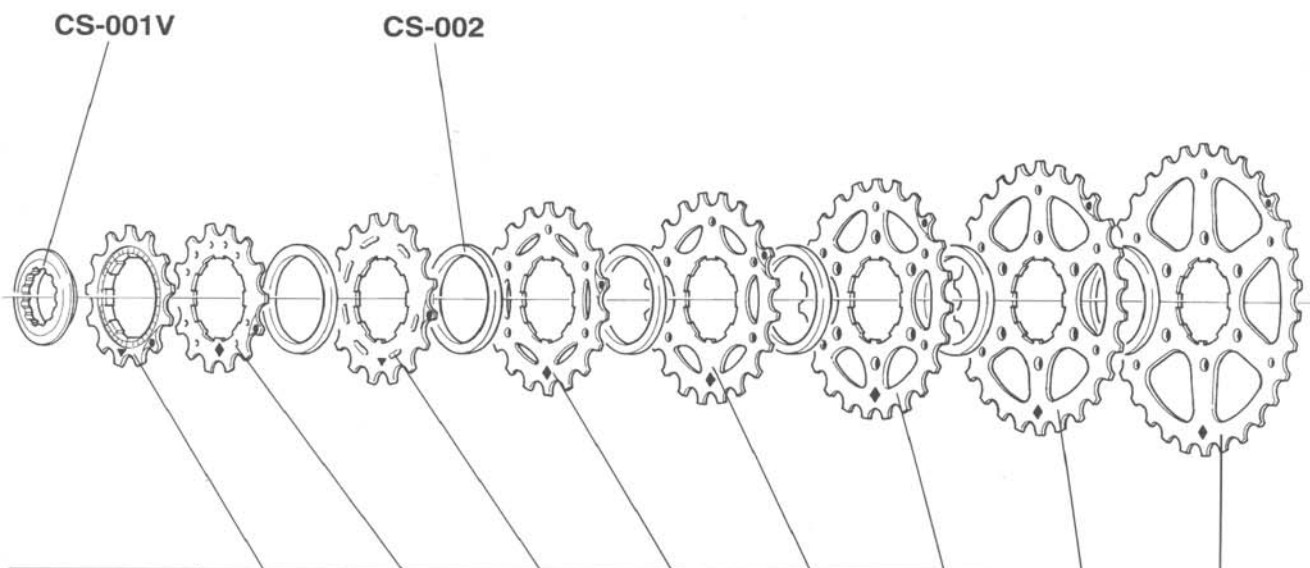
CS-001 (Z11-12-13-14)

CS-002



11 - 18	11A-1P	12A-1P	13A	14A	15A	16A	17A	18C
	CS-008	CS-003	CS-131	CS-141	CS-151	CS-161	CS-171	CS-183
11 - 21	11B-1P	12B-1P	13B	14B	15B	17B	19A	21A
	CS-009	CS-004	CS-132	CS-142	CS-152	CS-172	CS-191	CS-211
11 - 26	11B-1P	13D	15C	17B	19A	21A	23A	26A
	CS-009	CS-134	CS-153	CS-172	CS-191	CS-211	CS-231	CS-261
12 - 19	12A-1P	13A	14A	15A	16A	17A	18C	19C
	CS-003	CS-131	CS-141	CS-151	CS-161	CS-171	CS-183	CS-193
12 - 21	12A-1P	13A	14A	15A	16A	17A	19A	21A
	CS-003	CS-131	CS-141	CS-151	CS-161	CS-171	CS-191	CS-211
12 - 23	12B-1P	13B	14B	15B	17B	19A	21A	23A
	CS-004	CS-132	CS-142	CS-152	CS-172	CS-191	CS-211	CS-231
12 - 25	12C-1P	13C	15C	17B	19A	21A	23A	25A
	CS-010	CS-133	CS-153	CS-172	CS-191	CS-211	CS-231	CS-251
13 - 21	13A-1P	14A	15A	16A	17A	18C	19C	21C
	CS-005	CS-141	CS-151	CS-161	CS-171	CS-183	CS-193	CS-213
13 - 23	13A-1P	14A	15A	16A	17A	19A	21A	23A
	CS-005	CS-141	CS-151	CS-161	CS-171	CS-191	CS-211	CS-231
13 - 26	13B-1P	14B	15B	17B	19A	21A	23A	26A
	CS-006	CS-142	CS-152	CS-172	CS-191	CS-211	CS-231	CS-261
14 - 26	14A-1P	15A	16A	17A	19A	21A	23A	26A
	CS-007	CS-151	CS-161	CS-171	CS-191	CS-211	CS-231	CS-261

Campagnolo



12 - 21	12A-1P	13A	14A	15A	16A	17A	19A	21A
	CS-003V	CS-131V	CS-141V	CS-151V	CS-161V	CS-171V	CS-191V	CS-211V
12 - 23	12B-1P	13B	14B	15B	17B	19A	21A	23A
	CS-004V	CS-132V	CS-142V	CS-152V	CS-172V	CS-191V	CS-211V	CS-231V
12 - 25	12C-1P	13C	15C	17B	19A	21A	23A	25A
	CS-010V	CS-133V	CS-153V	CS-172V	CS-191V	CS-211V	CS-231V	CS-251V
13 - 23	13A-1P	14A	15A	16A	17A	19A	21A	23A
	CS-005V	CS-141V	CS-151V	CS-161V	CS-171V	CS-191V	CS-211V	CS-231V
13 - 26	13B-1P	14B	15B	17B	19A	21A	23A	26A
	CS-006V	CS-141V	CS-151V	CS-172V	CS-191V	CS-211V	CS-231V	CS-261V
13 - 28	13B-1P	14B	16B	18B	20B	22B	25B	28B
	CS-006V	CS-142V	CS-162V	CS-182V	CS-202V	CS-222V	CS-252V	CS-282V
14 - 26	14A-1P	15A	16A	17A	19A	21A	23A	26A
	CS-007V	CS-151V	CS-161V	CS-171V	CS-191V	CS-211V	CS-231V	CS-261V

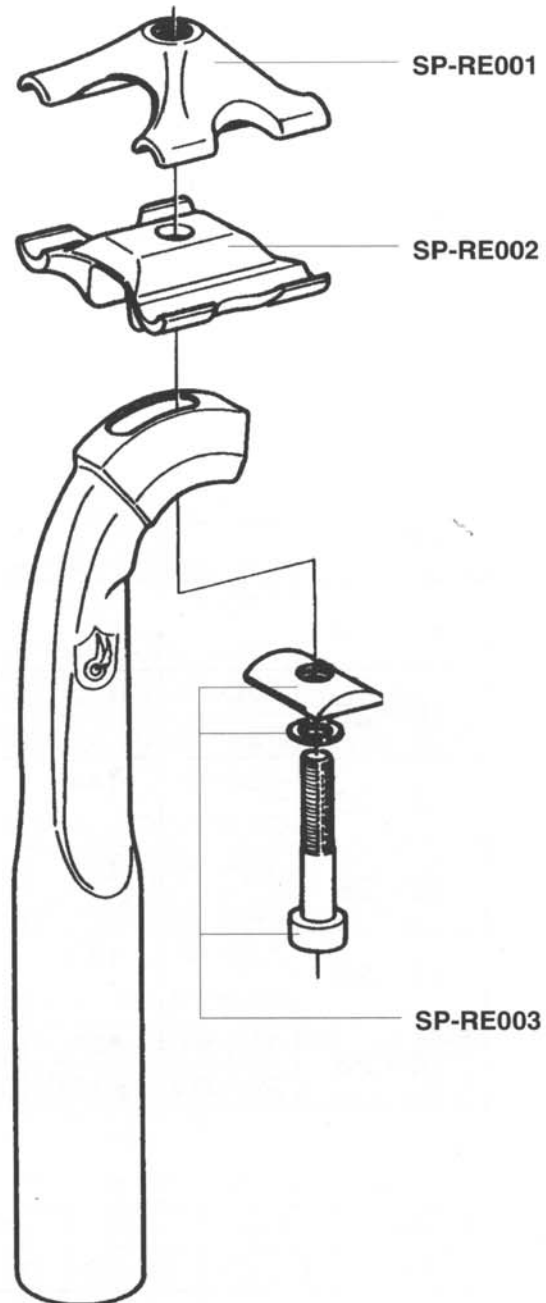
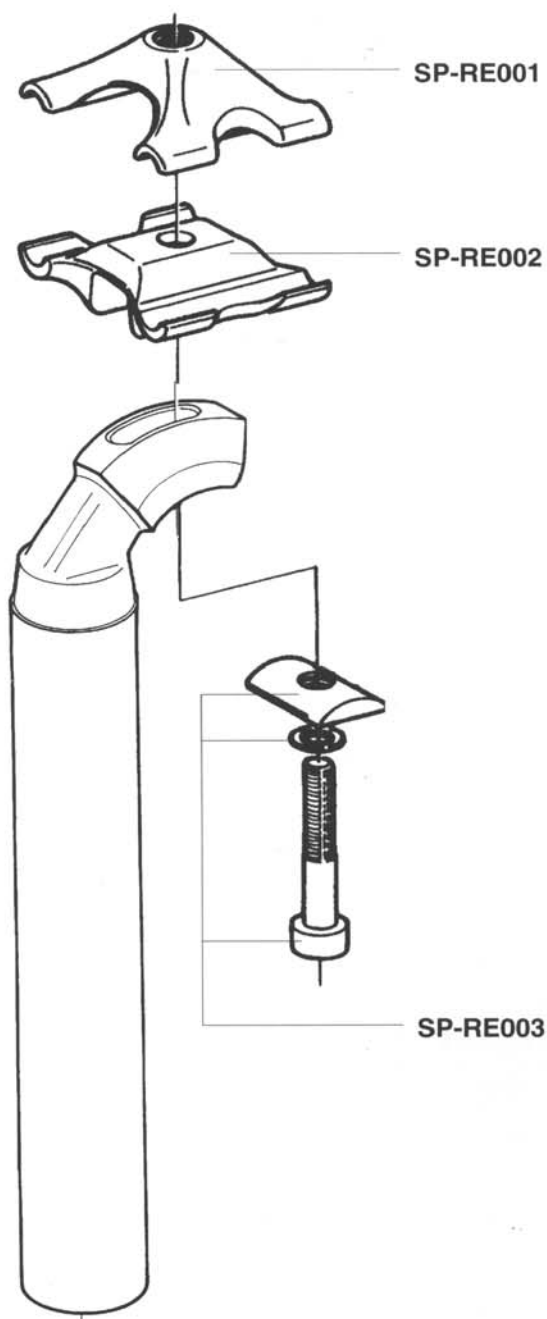
* Errata Corrige: CS-142V

° Errata Corrige: CS-152V



RECORD SP-10RE

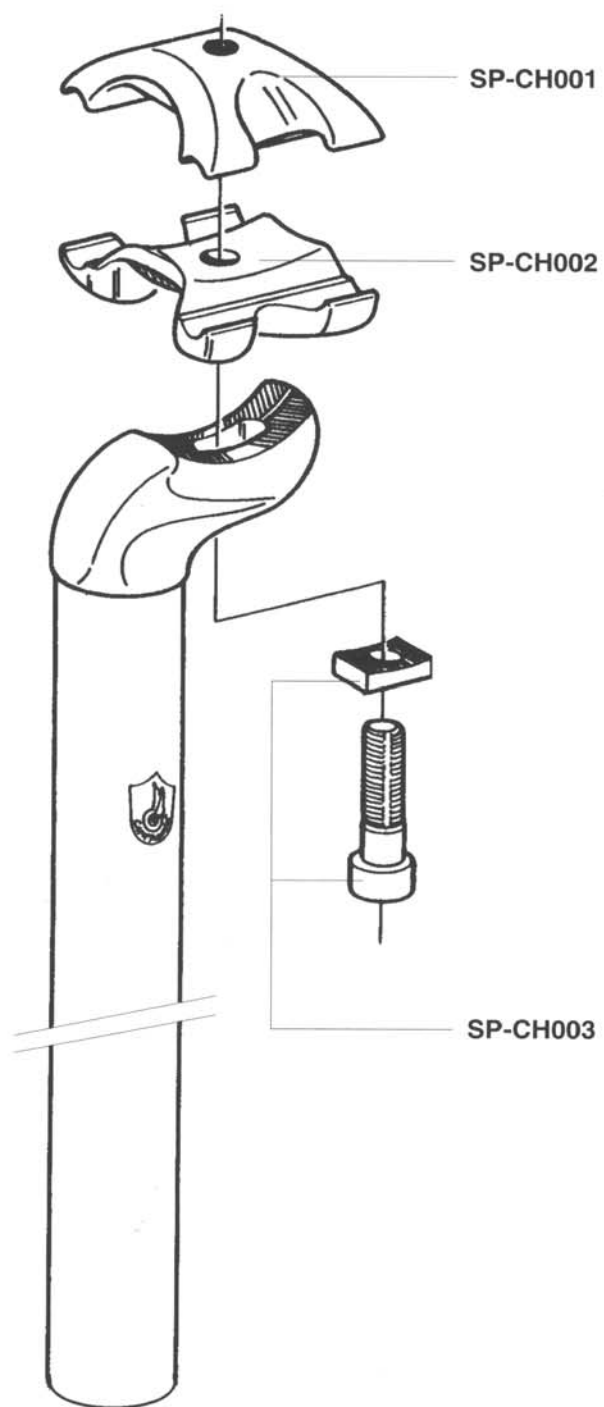
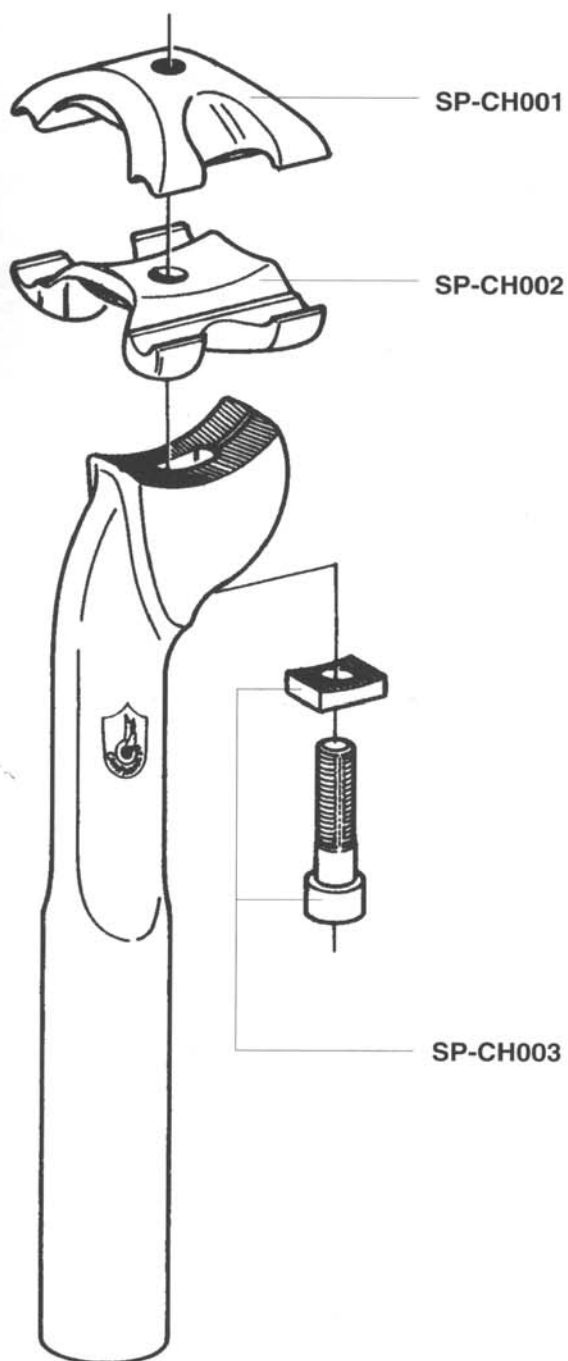
CHORUS SP-10CH



Campagnolo

ATHENA SP-10AT

RECORD OR SP-IC



Campagnolo








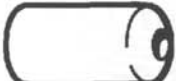

CABLES AND CASINGS COMPLET SET

GROUP DESTINATION	DERAILLEURS	BRAKES
RECORD ERGOPOWER	CG-ER001	
RECORD TRADITIONAL	CG-DD101	CG-BR101
CHORUS ERGOPOWER	CG-ER001	
CHORUS TRADITIONAL	CG-DD101	CG-BR101
ATHENA ERGOPOWER	CG-ER001	
ATHENA TRADITIONAL	CG-DD101	CG-BR101
VELOCE ERGOPOWER	CG-ER002	
VELOCE TRADITIONAL	CG-DD102	CG-BR102
MIRAGE ERGOPOWER	CG-ER002	
MIRAGE TRADITIONAL	CG-DD102	CG-BR102
AVANTI ERGOPOWER	CG-ER002	
AVANTI TRADITIONAL	CG-DD102	CG-BR102
RECORD OR BULLET	CG-DD103	CG-BR103
RECORD OR THUMBSHIFTERS	CG-DD104	CG-BR103

Campagnolo

CABLES AND CASINGS SPARE PARTS

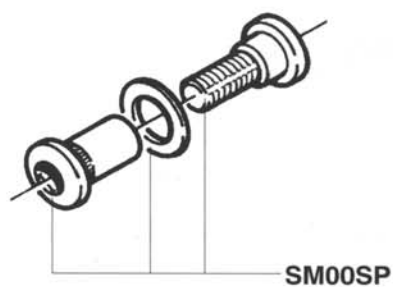
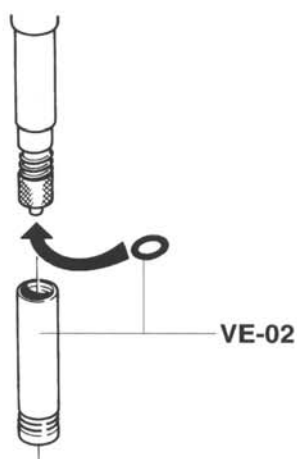
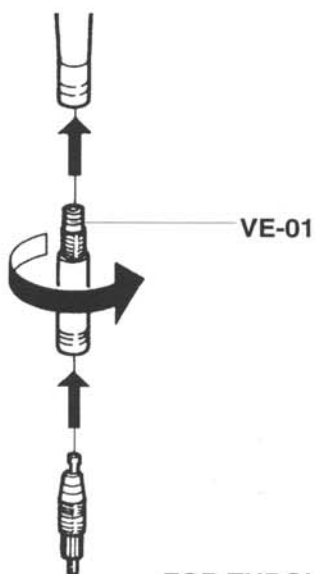


		FRONT	REAR
BRAKES		Ø 1,6 mm L. 800 mm CG-CB003	Ø 1,6 mm L. 1600 mm CG-CB013
		Ø 5 mm L. 580 mm CG-CS014	Ø 5 mm L. 1250 mm CG-CS002
		Ø 6 mm CG-CS011	
DERAILLEURS	 Ø 1,2 mm	ERGOPOWER	L. 1600 CG-CB014
		ERGOPOWER	L. 2000 CG-CB009
		SHIFTING LEVERS	L. 830 CG-CB011
		SHIFTING LEVERS	L. 1600 CG-CB014
	 Ø 4,5 mm	ERGOPOWER	L. 680 CG-CS015
		ERGOPOWER	L. 330 CG-CS008
		SHIFTING LEVERS	L. 330 CG-CS010
		Ø 5,7 mm CG-CS012	
		Ø 5,7/4 mm CG-CS013	

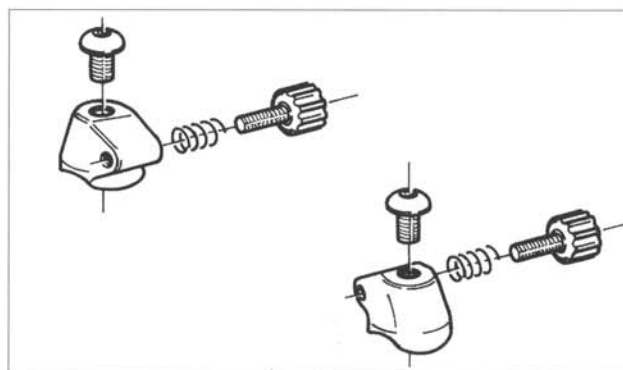
Campagnolo



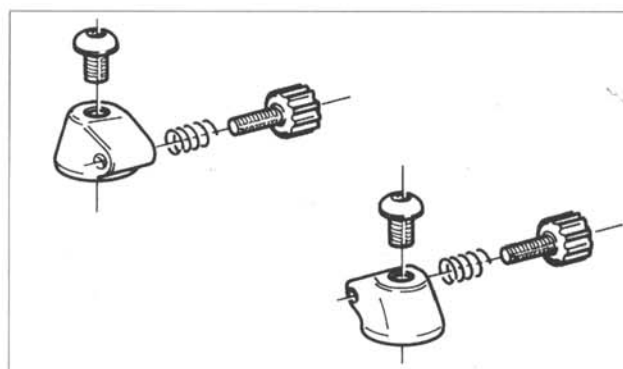
VARIOUS



Campagnolo



Aluminium: EC-RE001 Resin: EC-AT001



Aluminium: EC-RE002 Resin: EC-AT002

