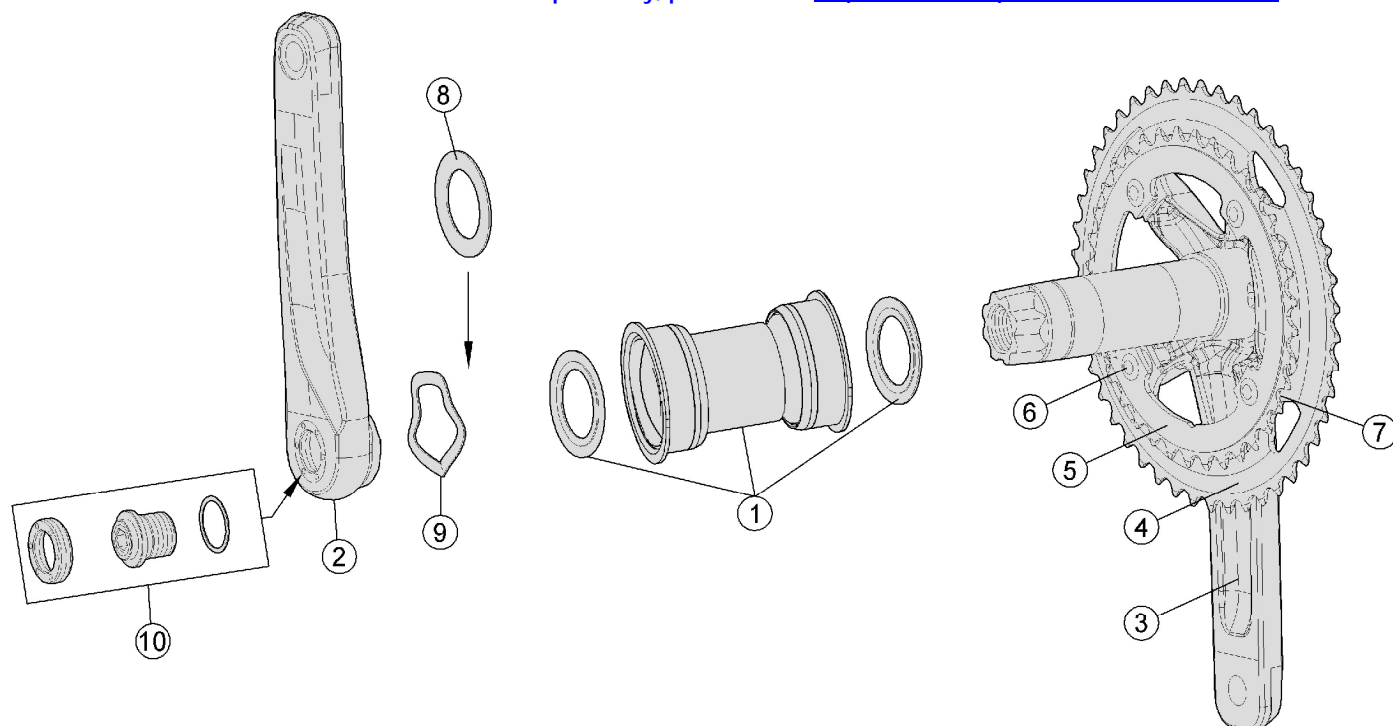


With BB-P6000/CZ

For all other BB compatibility, please visit: <http://www.fullspeedahead.com/techdoc/>



Item No.	FSA Code No.	Description	Notes
1	200-3112	BB-PF6000/CZ Road stainless BB-PF30	
2	34000030002010	165L	K1501 Gossamer Pro Asymmetric Bolt Spacing (ABS) Left 386EVO Arm
	34000030003010	170L	
	34000030004010	172.5L	
	34000030005010	175L	
3	34100011002010	165L	K2501 Gossamer Pro Asymmetric Bolt Spacing (ABS) Right 386EVO Arm/ Spindle
	34100011003010	170L	
	34100011004010	172.5L	
	34100011005010	175L	
4	371-0034005050	WA624 Super T Asymmetric Bolt Spacing Chainring (BCD 110mm) 50T	N10/N11 ★Optional parts
5	371-0037002050	WB301 CNC Pro Asymmetric Bolt Spacing Chainring (BCD 110mm) 34T	N10/N11 ★Optional parts
6	390-1042	ML023 Chainring Bolts	
7	23000021000010	MW426 5.5mm Asymmetric Bolt Spacing Chainring Spacer	★
8	230-4038	MS188 Adjustment Spacer	For adjusting spindle to bottom bracket width variation
9	230-5002	MW083 Wave Spring Washer	
10	230-5004	QR-16 Self-Extracting Crank Bolt Assembly	

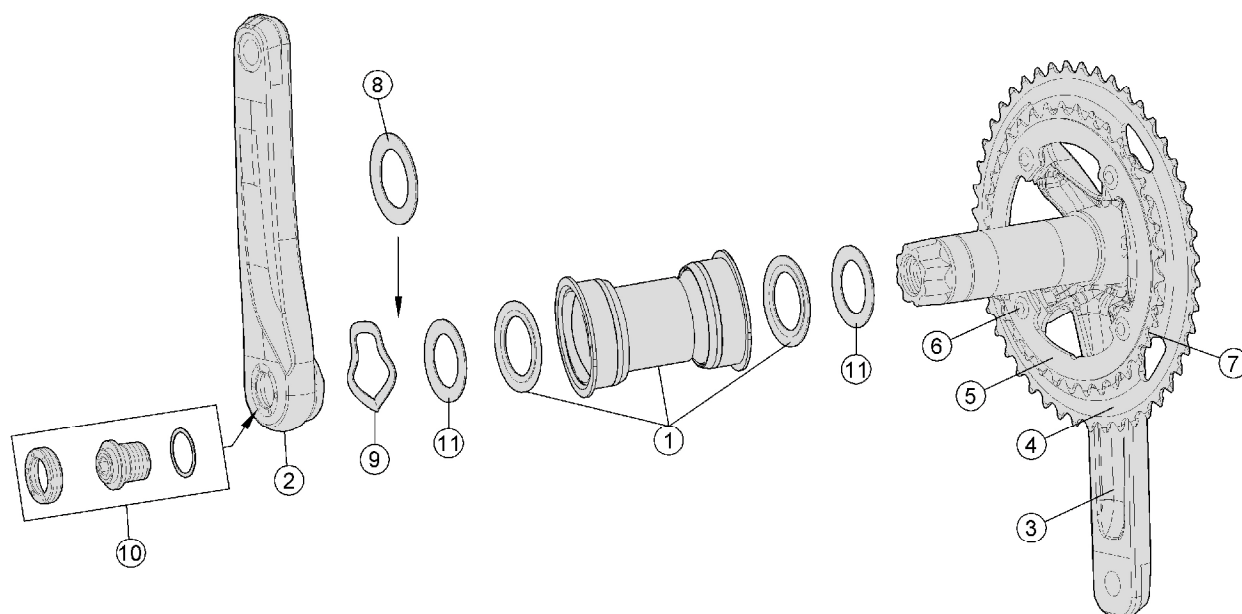
## ★Optional Parts

Item No.	FSA Code No.	Description	Notes
53/39	371-0033007050	WA626 Super T Asymmetric Bolt Spacing Chainring (BCD 110mm) 53T	N10/N11
	371-0041005050	WB299 CNC Pro Asymmetric Bolt Spacing Chainring (BCD 110mm) 39T	N10/N11
52/36	371-0031006050	WA625 Super T Asymmetric Bolt Spacing Chainring (BCD 110mm) 52T	N10/N11
	371-0036003050	WB300 CNC Pro Asymmetric Bolt Spacing Chainring (BCD 110mm) 36T	N10/N11
50/34	371-0037002050	WA624 Super T Asymmetric Bolt Spacing Chainring (BCD 110mm) 50T	N10/N11
	371-0036003050	WB301 CNC Pro Asymmetric Bolt Spacing Chainring (BCD 110mm) 34T	N10/N11
46/36	371-0035003050	WA623 Super T Asymmetric Bolt Spacing Chainring (BCD 110mm) 46T	N10/N11
	371-0036003050	WB300 CNC Pro Asymmetric Bolt Spacing Chainring (BCD 110mm) 36T	N10/N11
7	23000022000010	MW447 5.5mm Chainring Spacer	For 48/32 only

★N10/N11 –compatible with both Shimano DA-7900 10-speed (N10) and DA-9000 11-speed (N11) systems, and SRAM 10 & 11-speed systems.

With BB-P6000/CZ

Disc brake optimized road crankset for use with 135mm O.L.D. rear hub spacing



Item No.	FSA Code No.	Description	Notes
1	200-3112	BB-PF6000/CZ Road stainless BB-PF30	
2	34000030002010	165L	K1501 Gossamer Pro Asymmetric Bolt Spacing (ABS) Left 386EVO Arm
	34000030003010	170L	
	34000030004010	172.5L	
	34000030005010	175L	
3	34100012002010	165L	K2501 Gossamer Pro Asymmetric Bolt Spacing (ABS) Right 386EVO Arm / Spindle for DB Road Crankset only
	34100012003010	170L	
	34100012004010	172.5L	
	34100012005010	175L	
4	371-0034005050	WA624 Super T Asymmetric Bolt Spacing Chainring (BCD 110mm) 50T	N10/N11 ★Optional parts
5	371-0037002050	WB301 CNC Pro Asymmetric Bolt Spacing Chainring (BCD 110mm) 34T	N10/N11 ★Optional parts
6	390-1042	ML023 Chainring bolts	
7	23000021000010	MW426 5.5mm Asymmetric Bolt Spacing Chainring Spacer	★
8	230-4038	MS188 Adjustable Spacer	For adjusting spindle to bottom bracket width variation
9	230-5002	MW083 Wave spring washer	
10	230-5004	QR-16 Self-extracting Crank Bolt Assembly	
11	230-7005OE	MW114 Spacer	For Gossamer DB crank only

★Optional Parts

Item No.	FSA Code No.	Description	Notes
53/39	371-0033007050	WA626 Super T Asymmetric Bolt Spacing Chainring (BCD 110mm) 53T	N10/N11
	371-0041005050	WB299 CNC Pro Asymmetric Bolt Spacing Chainring (BCD 110mm) 39T	N10/N11
52/36	371-0031006050	WA625 Super T Asymmetric Bolt Spacing Chainring (BCD 110mm) 52T	N10/N11
	371-0036003050	WB300 CNC Pro Asymmetric Bolt Spacing Chainring (BCD 110mm) 36T	N10/N11
46/36	371-0035003050	WA623 Super T Asymmetric Bolt Spacing Chainring (BCD 110mm) 46T	N10/N11
	371-0036003050	WB300 CNC Pro Asymmetric Bolt Spacing Chainring (BCD 110mm) 36T	N10/N11
48/32	371-0066004050	WA635 Super T Asymmetric Bolt Spacing Chainring (BCD 110mm) 48T	N10/N11
	371-0067001050	WB394 CNC Pro Asymmetric Bolt Spacing Chainring (BCD 110mm) 33T	N10/N11
7	23000022000010	MW447 5.5mm Asymmetric Bolt Spacing Chainring Spacer	For 48/32 only

★N10/N11 –compatible with both Shimano DA-7900 10-speed (N10) and DA-9000 11-speed (N11) systems, and SRAM 10 & 11-speed systems.

