



EN

PROFESSIONNAL WHEEL TRUING STAND WITH ACCESSORIES

CR-07699

VAR thanks you for purchasing **CR-07699** specially designed for bicycle wheel truing.

Please read this manual carefully before installation and use.



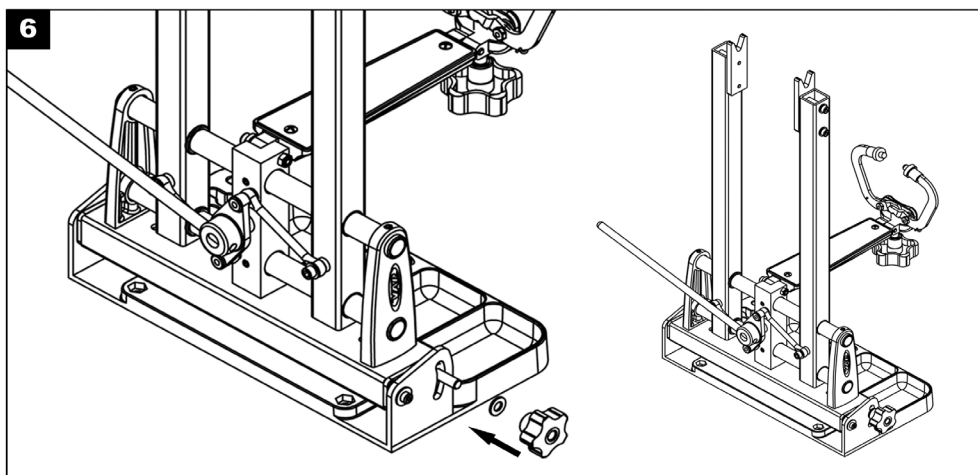
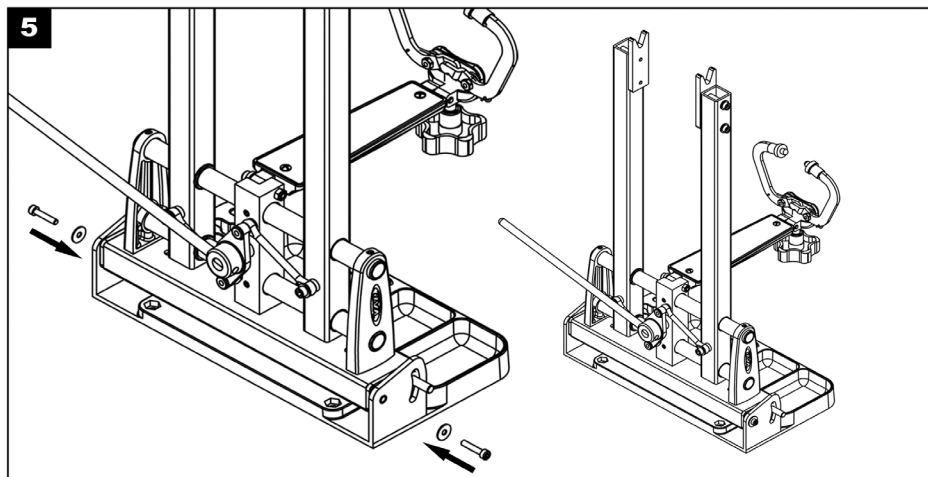
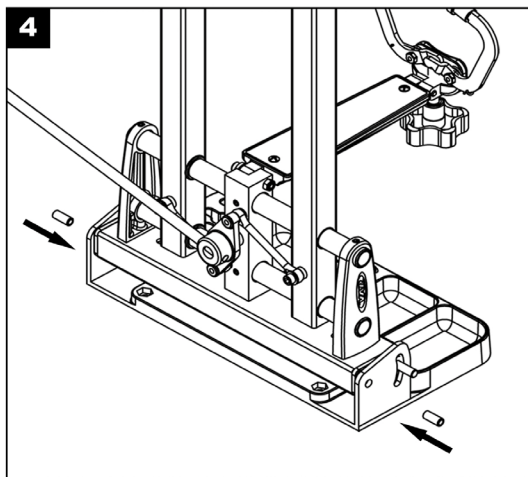
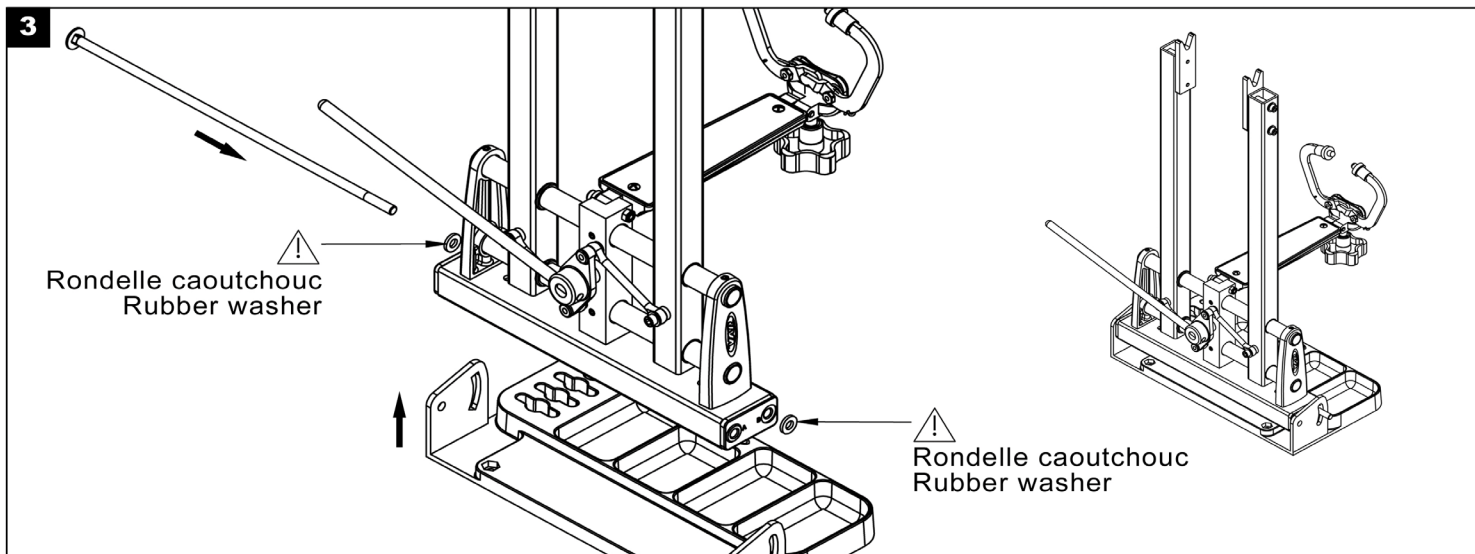
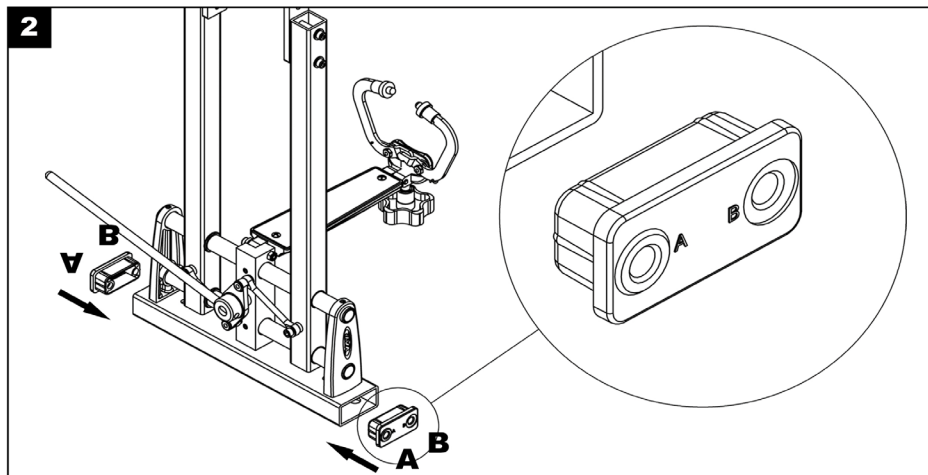
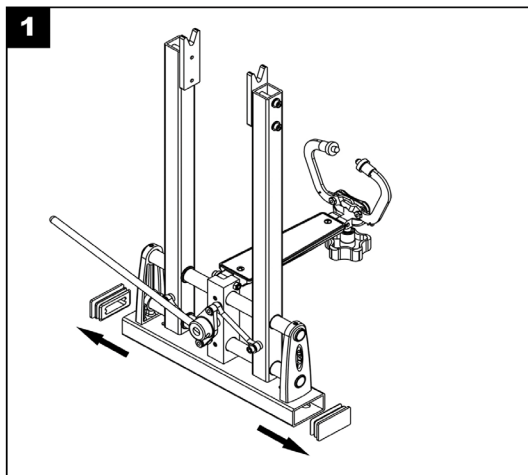
Are included :

- 1 **CR-07600** wheel truing stand
- 1 **CR-07650** caliper arm adjusting barrel
- 1 **CR-07700** wheel truing stand tilting base
- 1 **CR-07300** thru-axle adaptor for truing stand

Summary :

- 1. CR-07700 Tilting base installation
- 2. CR-07650 Caliper arm adjusting barrel installation & use
- 3. General recommendations
- 4. Wheel installation
- 5. Maintenance
- 6. Swing arm centering

1. CR-07700 Tilting base installation :



CR-07700

Espace Eiffel – Lot D6
19 - 21, avenue Gustave Eiffel
28630 Gellainville – France

Tel. : 02 37 33 37 10
Fax : 02 37 33 37 17
contact@vartools.com
www.vartools.com

2. CR-07650 Caliper arm adjusting barrel installation & use

CR-07650 comes with 2 installation screws and 1 adaptation screw.

First, you need to install the adaptation screw into the **CR-07600** central upright. Then attach the adjusting barrel to the swing arm and the adaptation screw with the two installation screws.

Use the adjusting barrel by rotating the black knob clockwise or counter clockwise. The swing arm will move upwards or downwards.



3. General recommendations

Self-centering makes a faster convergence towards the ideal assembly possible. Make sure the hub is in good condition and that it's lateral play was perfectly settled before. Any adjustment on the hub after truing could impose to adjust the centering of the wheel.

Also check that the axle and its ends are not bent or deformed.

Remove the tire before adjusting the spoke tensions. The tire and its inflation pressure cause forces on the rim. This can significantly alter the spoke tensions. Tensions can also fluctuate depending on whether or not the tire is present, even deflated, especially with tubeless tyres.

Radial and lateral defects must be checked on a bare rim. Do not rely on the tire to adjust lateral and radial defects; tires are often slightly deformed, especially mountain bike models.

The self-centering device of your **CR-07600** wheel truing stand does not exempt you from using the VAR **RP-14300** centering tool, in order to achieve ultimate precision.

4. Wheel installation

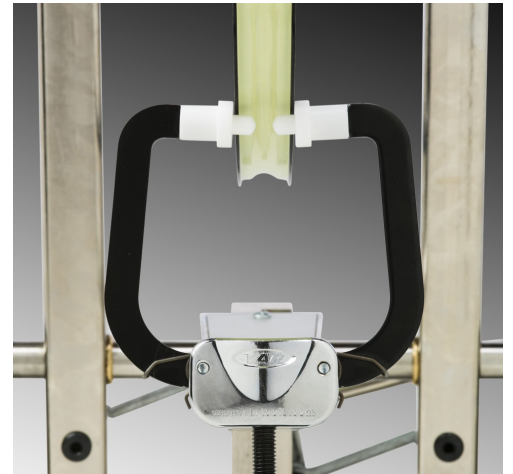
1. Use the handle to adjust the truing stand to the hub width.
2. Place the wheel at the bottom of the truing stand's uprights. Use the handle to close the truing stand.
3. Tighten the wheel on the truing stand with the wheel skewer/nuts. In case of a «thru axle» hub, use the VAR **CR-07300** adaptor.
4. Adjust the swingarm and the tilt of the nylon tips equipped caliper, in order to work comfortably and to have an easy viewing of the rim between the nylon tips. Once your setup done, avoid modifying it.

5. Maintenance

1. Regularly check the tips condition. Severe wear could affect the wheel centering and/or complicate defects readings.

This could also alter the rim finishings.

In case of wear, replace them with **CR-07431-2**.

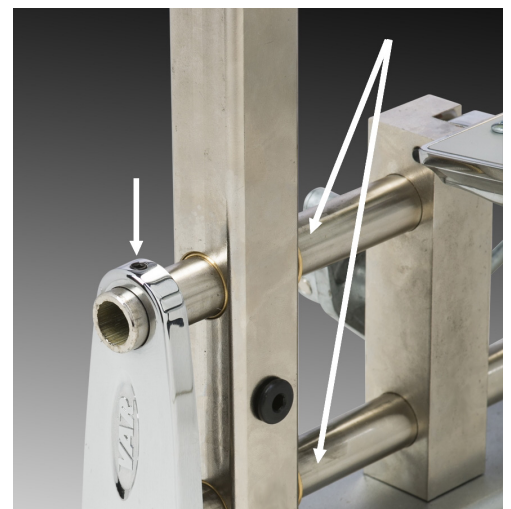


2. Regularly spray VAR NL-76000 on the horizontal guides. It eases the uprights movements and prevents the bushings from premature wear.

3. Your truing stand is equipped with play adjustment mechanism. We do not recommend modifying the original setup.

However, if you wish to modify the original setup, use the top left and right screws, 1/16 by 1/16 turn.

This new setup could harden the opening mechanism.



6. Swing arm centering

Each VAR **CR-07699** is assembled, adjusted and checked by hand at VARTOOLS. Professional use, shocks and time could decentre the adjustable swingarm and the nylon tips equipped caliper.

Please follow these steps.

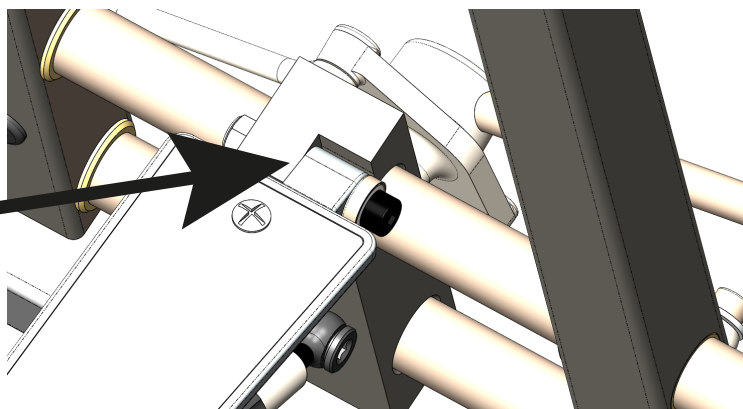
1. Using a VAR **RP-14300** wheel alignment gauge and VAR **CR-07600/CR-07699** wheel truing stand, perform a complete truing and centering of a wheel of your choice.

2. Install the wheel in the truing stand regarding chapter 4, «Wheel installation».

3. Set the nylon tips equipped caliper to the rim, leaving no more than 1 mm of space between the tips and the rim. 0.5mm would be perfect.

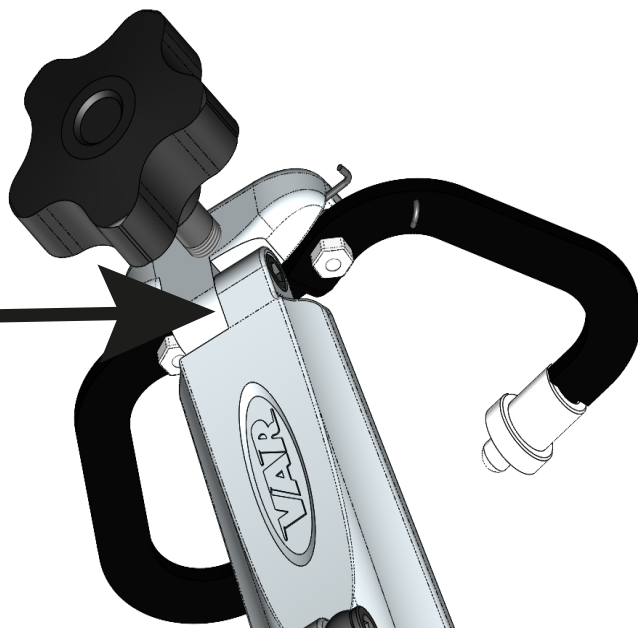
4.1 The swing arm is left off-centered. Remove the swing arm connection bolt and place a thin shim between the central upright and the swing arm, as shown :

Place shim here



4.2 The swing arm is right off-centered. Remove the caliper connection bolt and place a thin shim between the caliper and the swing arm, as shown :

Place shim here



Recommended shim dimensions :

6 mm x 12 mm x 0.5 mm (inner diameter x outer diameter x thickness)