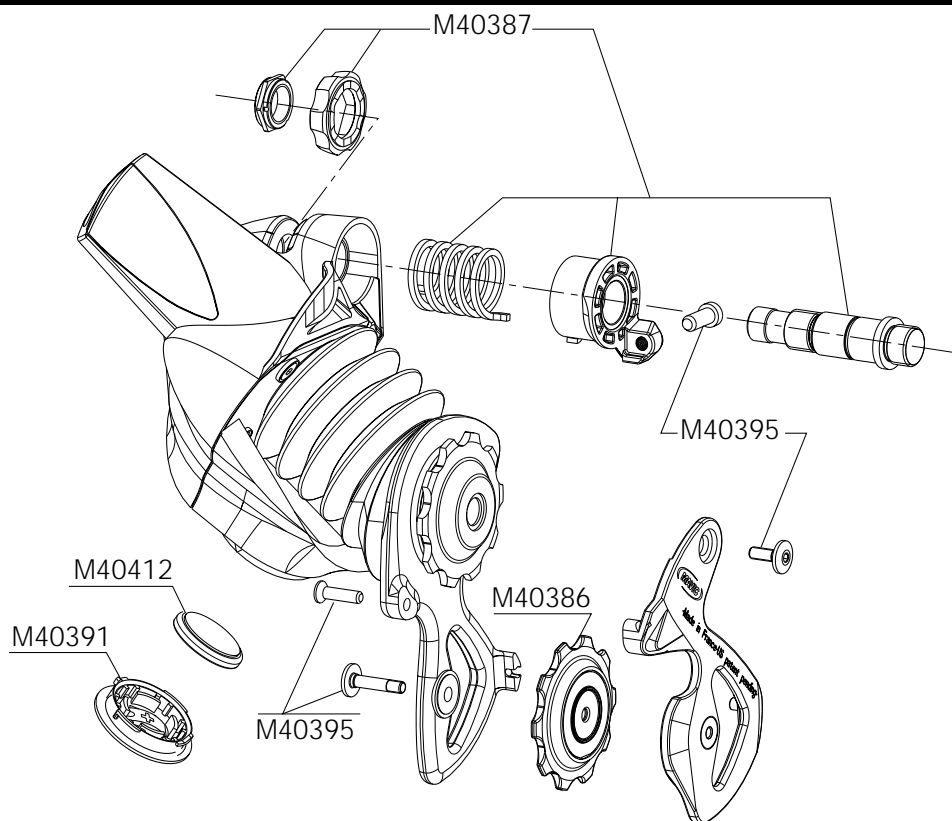


SPARE PARTS
REFERENCES

MAINTENANCE

TOOLS NEEDED :

- 1 x 4 mm Allen wrench / • 1 x 2 mm Allen wrench / • 1 Torx® wrench (T10).

We recommend that you remove the chain in order to facilitate the following operations :

Replacing the lower pulley :

- 1 Put the derailleur "all the way to the left" for access to the Torx® screw (T10).
- 2 Loosen the Torx® (T10).
- 3 Loosen the lower pulley screw with the 2 mm Allen wrench and remove it.

Do not remove the external cage insert.

- 4 Slightly separate the lower cage to free the lower pulley.
- 5 Replace the lower pulley
- 6 Reassemble the unit in reverse order (points 1 - 4).

Torx® bolt (T10) torque : 0,45 Nm.

Lower pulley screw torque: 0,55 Nm.

Replacing the inside cage :

- 1 Follow points 1 - 4 in the preceding paragraph.
- 2 Loosen the upper pulley screw with the 2 mm Allen wrench and remove it.
- 3 Replace the inside cage
- 4 Reassemble the unit in reverse order (points 1 - 2).

Torx® bolt (T10) torque : 0,45 Nm.

Lower and upper pulley screw torque: 0,55 Nm.

Replacing the frame axle :

- 1 Remove the derailleur from the frame with the 4 mm Allen wrench.
- 2 Completely loosen the axle to allow the free rotation of the wheel.
- 3 Position the 4 mm Allen wrench between the axle and the cage stop mounting ring for leverage and put it horizontal (about a 90° rotation).
- 4 Let the spring push the ring towards the outside.
- 5 Remove all the parts and replace the damaged ones.

Don't forget to position the nut on the inside of the ring.

Make sure the wheel is facing the proper direction: notched side towards the inside of the derailleur.

- 6 Reassemble the unit in reverse order (points 1 - 4) with no grease (self-lubricating mechanism) assembling the frame axle last.