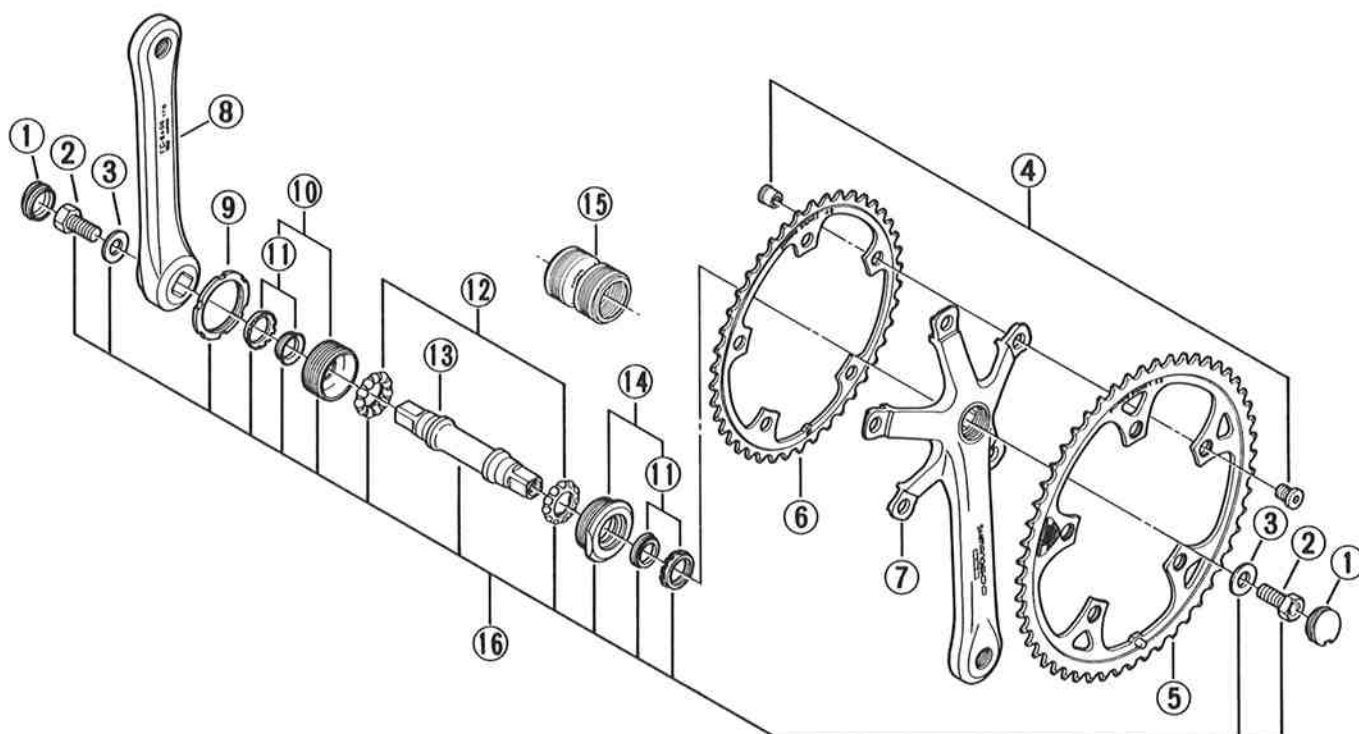


FC-6400

BB-6400

Front Chainwheel w/BIOPACE Chainring
SHIMANO 600 Ultegra
Bottom Bracket Assembly
SHIMANO 600 Ultegra

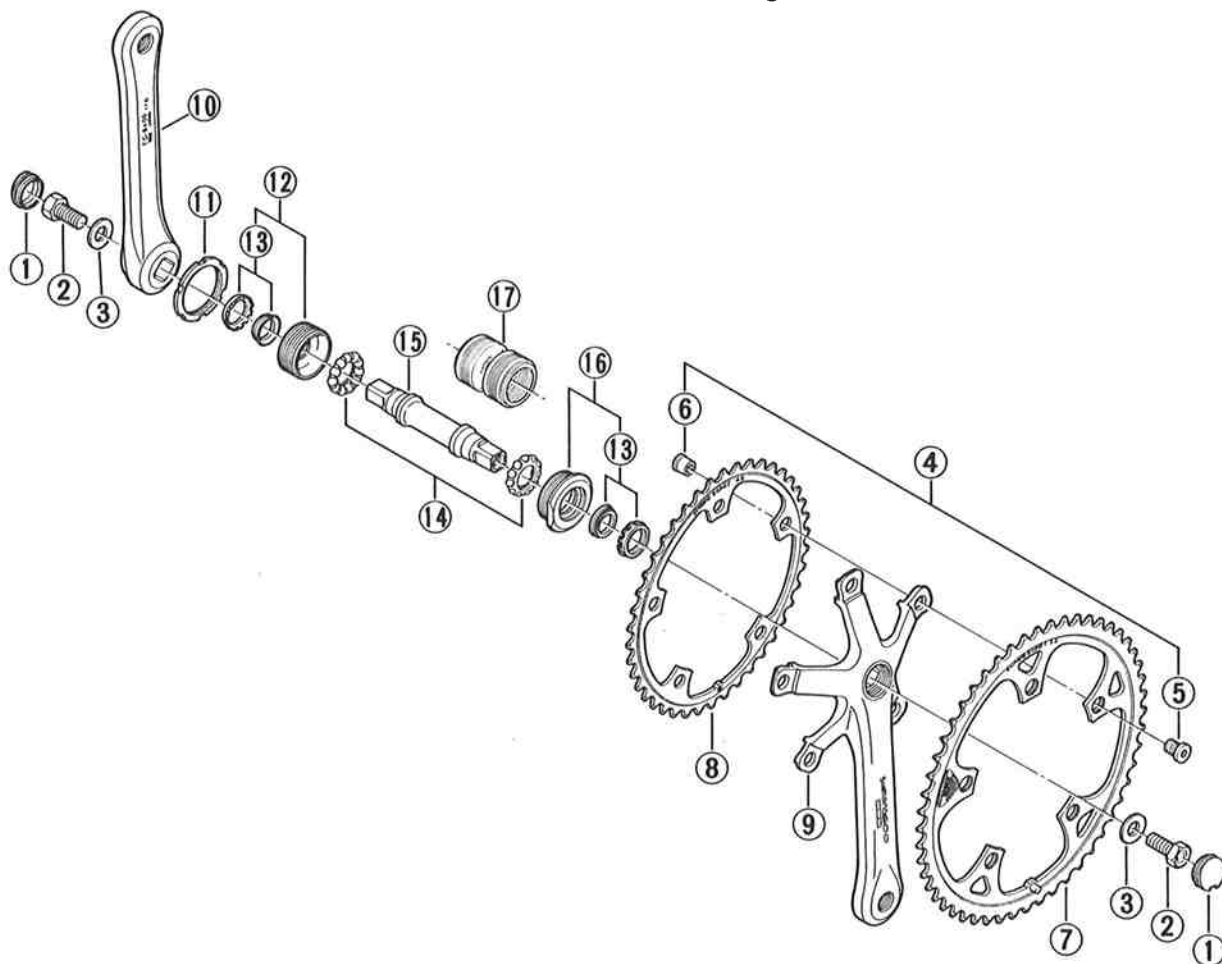


● Bolt circle diameter: 130mm(5-1/8")

ITEM NO.	PART NO.	DESCRIPTION	Q'TY
1	16E 9801	Crank Arm Cap w/Seal Ring	
2	134 0300	Crank Arm Fixing Bolt	
3	134 0400	Crank Arm Fixing Washer	
4	132 9801	Chainring Fixing Bolt & Nut (5sets)	
* 5	147 0520	Chainring 52T / BIOPACE	
	147 0530	Chainring 53T / BIOPACE	
	147 0531	Chainring 53T / BIOPACE (GMG-Color)	
* 6	147 0420	Chainring 42T / BIOPACE	
* 7	16E 0200	Right Crank Arm (165mm / B.C.9/16"x20T)	
	16E 0400	Right Crank Arm (170mm / B.C.9/16"x20T)	
	16E 0500	Right Crank Arm (172.5mm / B.C.9/16"x20T)	
	16E 0600	Right Crank Arm (175mm / B.C.9/16"x20T)	
* 8	16F 0200	Left Crank Arm (165mm / B.C.9/16"x20T)	
	16F 0400	Left Crank Arm (170mm / B.C.9/16"x20T)	
	16F 0500	Left Crank Arm (172.5mm / B.C.9/16"x20T)	
	16F 0600	Left Crank Arm (175mm / B.C.9/16"x20T)	
9	137 0501	Lock Ring (1.37"x24T) English Thread	
	137 0511	Lock Ring (35xP1) French Thread	
	137 0522	Lock Ring (36x24T) Italian Thread	
10	19D 9801	Left Hand Adjustable Cup Unit (1.37"x24T) English Thread	
	19D 9802	Left Hand Adjustable Cup Unit (35xP1) French Thread	
	19D 9803	Left Hand Adjustable Cup Unit (36x24T) Italian Thread	
11	19D 9804	Seal Cap & Seal Ring	
12	189 9810	Ball Retainer (1/4") 2pcs.	
13	19D 0100	Spindle (D-3H) 113mm for Shell Width 68mm	
	19D 0110	Spindle (D-5H) 115mm for Shell Width 70mm	
14	19D 9805	Right Hand Fixed Cup Unit (1.37"x24T) English Thread	
	19D 9806	Right Hand Fixed Cup Unit (35xP1) French Thread	
	19D 9807	Right Hand Fixed Cup Unit (36x24T) Italian Thread	
15	179 2100	Dust Seal	
*16	19D 110000	Bottom Bracket Assembly (D-3H....68-113 / 1.37"x24T)	
	19D 210000	Bottom Bracket Assembly (D-5H....70-115 / 1.37"x24T)	

Printed in Japan 8801-U834B

FC-6400 Front Chainwheel w/BIOPACE Chainring
SHIMANO 600 Ultegra
BB-6400 Bottom Bracket Assembly
SHIMANO 600 Ultegra



● Bolt circle diameter: 130mm

ITEM NO.	PART NO.	DESCRIPTION	Q'TY
1	3-16E 9801	Crank Arm Cap w/Seal Ring	
2	134 0300	Crank Arm Fixing Bolt	
3	134 0400	Crank Arm Fixing Washer	
4	3-132 9801	Chainring Fixing Bolt & Nut (5sets)	
5	132 0502	Chainring Fixing Bolt	
6	132 0600	Chainring Fixing Nut	
* 7	147 0520	Chainring 52T / BIOPACE	
	147 0521	Chainring 52T / BIOPACE (GMG-Color)	
	147 0530	Chainring 53T / BIOPACE	
	147 0531	Chainring 53T / BIOPACE (GMG-Color)	
8	147 0420	Chainring 42T / BIOPACE	
	147 0421	Chainring 42T / BIOPACE (GMG-Color)	
9	16E 0400	Right Crank Arm (170mm / B.C.9/16"x20T)	
	16E 0410	Right Crank Arm (170mm / M14x1.25)	
10	16F 0400	Left Crank Arm (170mm / B.C.9/16"x20T)	
	16F 0410	Left Crank Arm (170mm / M14x1.25)	
11	137 0501	Lock Ring (1.37"x24T) English Thread	
	137 0511	Lock Ring (35xP1) French Thread	
	137 0522	Lock Ring (36x24T) Italian Thread	
12	3-19D 9801	Left Hand Adjustable Cup Unit (1.37"x24T) English Thread	
	3-19D 9802	Left Hand Adjustable Cup Unit (35xP1) French Thread	
	3-19D 9803	Left Hand Adjustable Cup Unit (36x24T) Italian Thread	
13	3-19D 9804	Seal Cap & Seal Ring	
14	3-189 9810	Ball Retainer (1/4") 2pcs.	
15	19D 0100	Spindle (D-3H) 113mm for Shell Width 68mm	
	19D 0110	Spindle (D-5H) 115mm for Shell Width 70mm	
16	3-19D 9805	Right Hand Fixed Cup Unit (1.37"x24T) English Thread	
	3-19D 9806	Right Hand Fixed Cup Unit (35xP1) French Thread	
	3-19D 9807	Right Hand Fixed Cup Unit (36x24T) Italian Thread	
17	179 2100	Dust Seal	