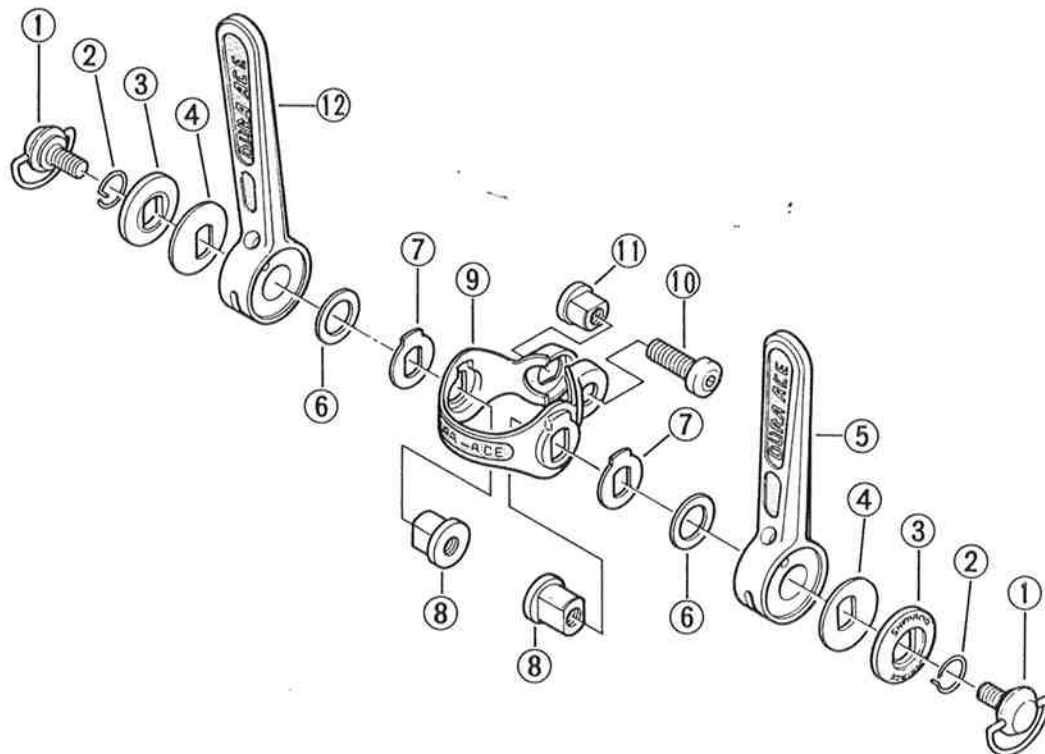


You may photocopy this sheet and use it as an order form.



# Model SL-7200

Shifting Lever  
DURA-ACE EX/Band Type



ITEM NO.	PART NO.	DESCRIPTION	Q'TY
1	3-683 9001-1	Lever Fixing Screw	
2	681 1300	Clutch Spring	
3	681 3400	Cap	
4	681 3500	Washer B	
5	3-683 9002	Rear Lever	
6	000 3901	Spacer A	
7	681 4100	Washer A	
8	681 0800	Lever Axle	
9	681 3100	Lever Clamp (1-1/8")	
10	681 3700	Clamp Bolt	
11	681 3800	Clamp Nut	
12	3-683 9003	Front Lever	

Printed in Japan 8206-338D