

Tacx Flux, Flux S, und Flux 2 Problembehebung von Tacx Facebook Gruppe

Kontakt Roland Gruber +43 6767 320009 mobil oder via Whatsapp

Tacx Flux T2900/S/2 Troubleshooting

Powered by Tacx Flux owners group.

Youtube-Anleitung von Roland Gruber: <https://www.youtube.com/watch?v=Sa1BdWRIAjo>

This is a free tool, from Tacx Flux owners group on Facebook. So if the links are not working subscribe for the group on Facebook. Then you will be able to follow all the links to videos.

It's no problem to share the link outside the group, if you have a friend with a Flux share it!

Maybe he will also need someday help with his Flux.

You are also welcome to add problems with solutions.

If you don't find an answer for a problem in this file, ask in the group.

Gehäuseschrauben: Universalschrauben mit Halbrundkopf (Spax) 4 x 12 mm und 4 x 16 mm mit Kreuzschlitzkopf

How it works:

1. Add the problem under the right Area/Part of the Flux (Hyperlink to group or picture with explanation)
2. Add the solution (Hyperlink to group or picture with explanation)

Freehub Stuck.....	3
Weird sound after putting the bike on the trainer.....	3
Where do the long and short screws belong? follow the link for solution. (long screws are marked in the pictures).....	4

Diagnosing Noise:.....	6
Noise from belt.....	6
How to change belt and measure bolt from Tension Arm	7
How to check if tension arm is twisted.....	7
How to change the tension arm.....	7
How to repair bent Fan.....	7
Flux 2/S Noise from belt Flux S/2 with hybrid tension arm.....	7
Noise if you put a long screw in a hole for a short one. Lost or damaged magnet.	
metallic-plastik sound appears after you mount housing.....	7
Heat problem / cooling:.....	11
Heat fix without open the device easy and fast.....	20
Ant + dropouts and Bluetooth not showing power data.....	21
Loss of Power or Erratic Power.....	21
Problem connecting Flux at Zwift (in this post are more tips how to solve the problem).....	22
No power on flux (electrical fault).....	22
ERG-mode not working.....	23
.....	23
Belts.....	25
Bearings	26
1 Piece 6002-2RS Not easy to change!! Maybe use a hot air blower to remove it. Otherwise a special tool is needed!!.....	28
.....	28
Original pulley:.....	29
2 Piece.....	29
.....	29
Freehub.....	29
2 Pieces 6802-2RS.....	29
.....	30
Specialtool needed or try if your freehub nut fits :-) Or try to heat up the thread with hotair blower maybe it's easier to open.....	30
Magnets:.....	30
Speedsensor:.....	30
Starlock Washer.....	31
Returning flux trainer to garmin.....	31
Things to remember.....	31

Chapter Freehub:

Freehub Stuck

Check if there is no gap between freehub and Flux. If there are no gap the nut inside Flux is loose. I marked it in the picture.



Solution:

Cleaned it up, fitted the black lock thing to where it needed to be. From the back I used a socket to press the outer bearing against the black ring, used lock on the black thing and tightened it. Maybe use Loctite.

Normally special tool needed, but this also fits ☐ ☐



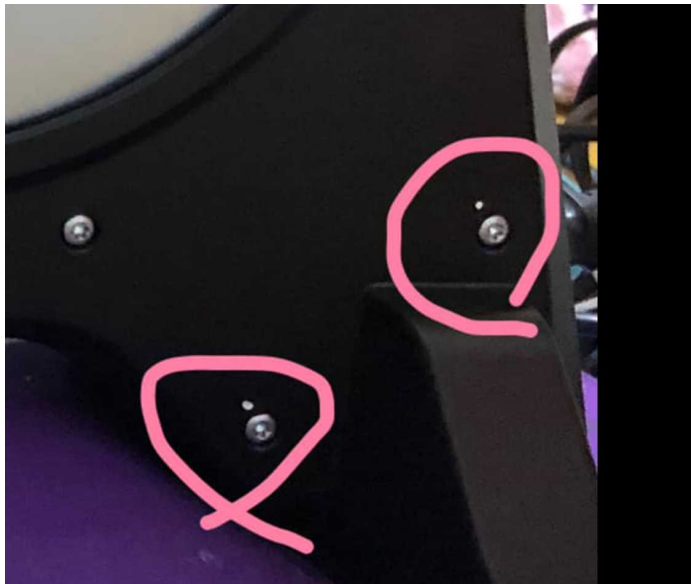
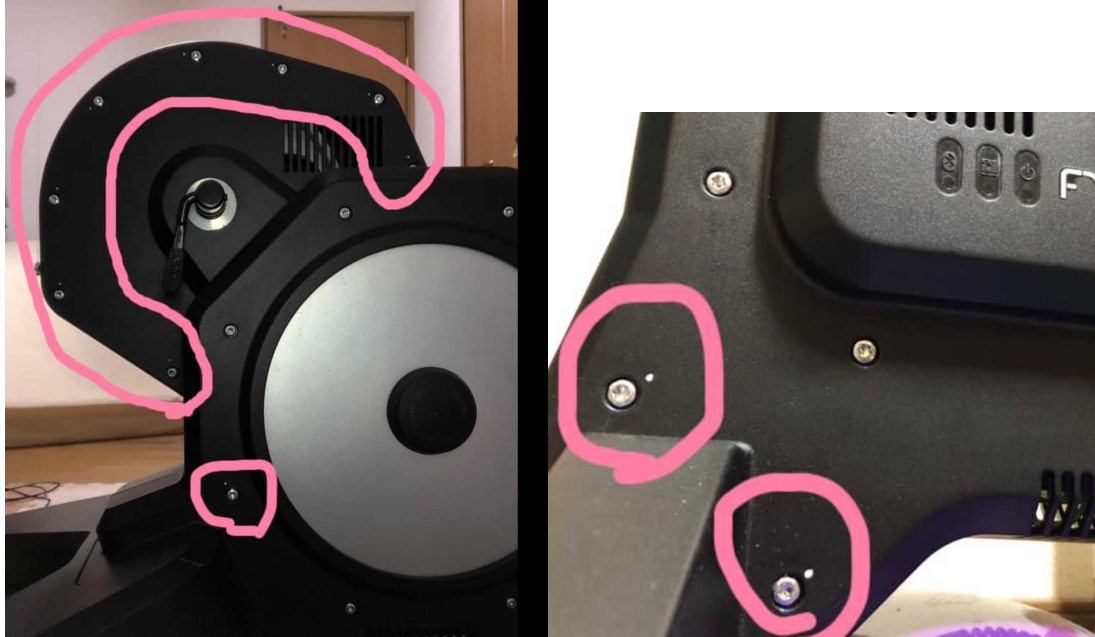
Weird sound after putting the bike on the trainer

Hi guys, recently fixed a problem with my belt and now I have another one. This time I ain't sure it is the Tacx or my bike, but I have a weird noise which I can't figure how to fix. I started after a sprint when I stood up.

Solution: take your thru axle adaptor off and put it back in again but tighter

Chapter housing

[Where do the long and short screws belong?](#) follow the link for solution. (long screws are marked in the pictures)



Chapter Belt/Pulley/Noise:

Diagnosing Noise:

Typically, there is noise generated by the bike chain and gears that can make it difficult to diagnose trainer noises from a video. Abnormal noise typically comes from either the belt side (right as looking at the back of the Flux units) or the flywheel side (left side).

Instead of cycling on the trainer, using a finger, rotate the flywheel (silver disk on left side that spins) by hand counter clockwise.

Flywheel Noise (left side):

Noise and any resistance/scraping from the left side is typically a bent fan. Another possibility is a displaced magnet. If the flywheel is rubbing you may be able to feel slight resistance as the flywheel is rotated. Note: it is possible that the belt side is rubbing but if something is rubbing inside, the unit will need to be opened to check anyway.

Belt Noise (right side):

If the flywheel seems to rotate freely with no noise but you can hear squeaking and/or straining, there is likely some misalignment from the belt drive. See the section below on "Noise from Belt".

Metallic scratching noise: Sometimes a coil touching the Alloy ring on flywheel. You will hear a metallic scratching noise, which often disappears during riding your Flux. It's repairable just remove the housing and the plate with the magnets. (use the same video as bent Fan). Remove the fan and check the plate for scratches. If you find scratches flip the plate for 180° and mount it again. Mount the flywheel and magnets. Turn the flywheel and listen for noise and search for the dent in the alloy plate. if you found it and there is still noise push the dent out per hand as good as possible. Mount everything (but not housing) and do a test ride. If it works, mount the housing.

Noise from belt

[Video where you could see what happens when your belt is worn out.](#)

Solution:

- 1: Order a new belt (PDF Spare Parts) [link to file section of the group.](#)
- 2: Change belt.
- 3: When your Flux is already open check if the Tensionarm is twisted. (prüfen, ob der Spannarm verdreht ist. Laut Roland Gruber bei Flux und Flux S aus Kunststoff, deswegen dort häufig verdreht, bei Flux 2 eine stabilere Hybridkonstruktion, deswegen

hier meist in Ordnung)

[How to change belt and measure bolt from Tension Arm](#)

If there is still noise check for twisted tension arm. Flux1/S for Flux 2 have a look inside which arm is mounted.

[How to check if tension arm is twisted.](#)

[How to change the tension arm.](#)

[How to repair bent Fan.](#)

[Flux 2/S Noise from belt Flux S/2 with hybrid tension arm.](#)

If there is a squeaking noise on your Flux S/2 (with Hybrid tensionarm)

Step 1: order a new belt and try it.

If this doesn't help try to put 4-5 mm underneath the spring to get more tension.

Use a nut 5 or 6mm with a zip tie or an allen key for testing.



Chapter Magnets

Noise if you put a long screw in a hole for a short one. Lost or damaged magnet. metallic-plastik sound appears after you mount housing.

1. Remove the housing and the belt like in the Video. [Remove housing and Belt](#)
2. Remove the Screw from electric plug (just one Torx t8)



3. Remove 4 Screws (left and right from small leg) Torx T20 Screwdriver



4. Remove 2 long screws with Torx T20 Screwdriver.



5.Remove 5 screws with 4 mm allen key.



6.Pull up frame with magnets. Check if they are loose, and search for a lost one inside the Flux.



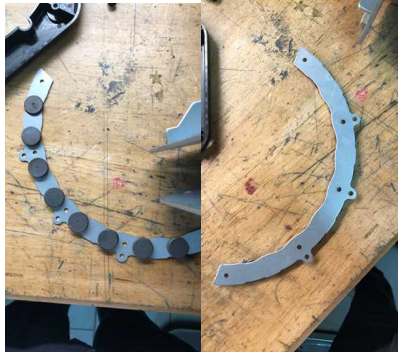
7. There are dots at the magnets which are showing +-, The magnet at the top has a smaller width than the others.



8. If one is loose, remove the plate where the magnets are glued on.



9. Check on the backside of the plate if there are any dents from the long screw.



10. If there is a dent use a hammer and a punch tool to remove the dent.



11. Mount the plate.



12. Clean the lost magnet and glue it back on. If you need a new one [Ferrit Magnet 20x5](#)

The magnet in the right side of the picture has a smaller width.



13. Mount everything, i always turn after every step/part i mounted the flywheel. So I could hear if there is another problem.

Chapter Heat problem / cooling:

Heat problem / cooling:

If you experience the resistance suddenly falling after a long time with high load, it might be related to the Flux overheating.

I typically experienced it after 1 hour when riding with an average of 300 watt continuously, then suddenly the watt and resistance drops.

Installing fans for cooling of the Flux helped on my problem, here is how I did it.

Dismantle the cabinet of the Flux like in this video:

<https://www.youtube.com/watch?v=FxJAXHkjSNY&t=501s>

I actually installed two different fans on my Flux at the same time:

A 92x92 mm fan in the bottom of the Flux, blowing air into the Flux.

A 60x60 mm fan on the right side of the flux, blowing air into the Flux.

I guess one of the fans would have been enough, but I installed both of them just to be on the safe side.

If you use both fans and a 12 volt power supply, you will get a whole lot of cooling, but also some noise from the fans.

Another option is to only use a 9 volt power supply, this will lower both the noise and the airflow from the fans. Until now it seems like 9 volt is enough on mine, when I use both fans.

Make a 3D print of this fan holder if you are going for the 92x92 mm fan at the bottom of the flux

<https://www.thingiverse.com/thing:4674886/files>

Here is the fans I used:

92x92x25mm 87,5m³/h 3000U/Min 87,5m³/h Sunon EF92251S11000UA

https://www.ebay.com/itm/L%C3%BCfter-12V-DC-1-68W-92x92x25mm-87-5m-h-3000U-Min-87-5m-h-Sunon-EF92251S11000UA/274082976425?ssPageName=STRK%3AMEBIDX%3AIT&_trksid=p2057872.m2749.l2649

60x60x10mm 42m³/h 5500U/Min 42m³/h ARX FD1260-A1151A2A

https://www.ebay.com/itm/L%C3%BCfter-12V-DC-3-48W-60x60x10mm-42m-h-5500U-Min-42m-h-ARX-FD1260-A1151A2A/230916672408?ssPageName=STRK%3AMEBIDX%3AIT&_trksid=p2057872.m2749.l2649

60x60 fan grill

https://www.ebay.com/itm/L%C3%BCftergitter-60x60mm-f%C3%BCr-Axiall%C3%BCfter-60x60x10mm-60x60x15mm-20mm-25mm/231085075023?ssPageName=STRK%3AMEBIDX%3AIT&_trksid=p2057872.m2749.l2649



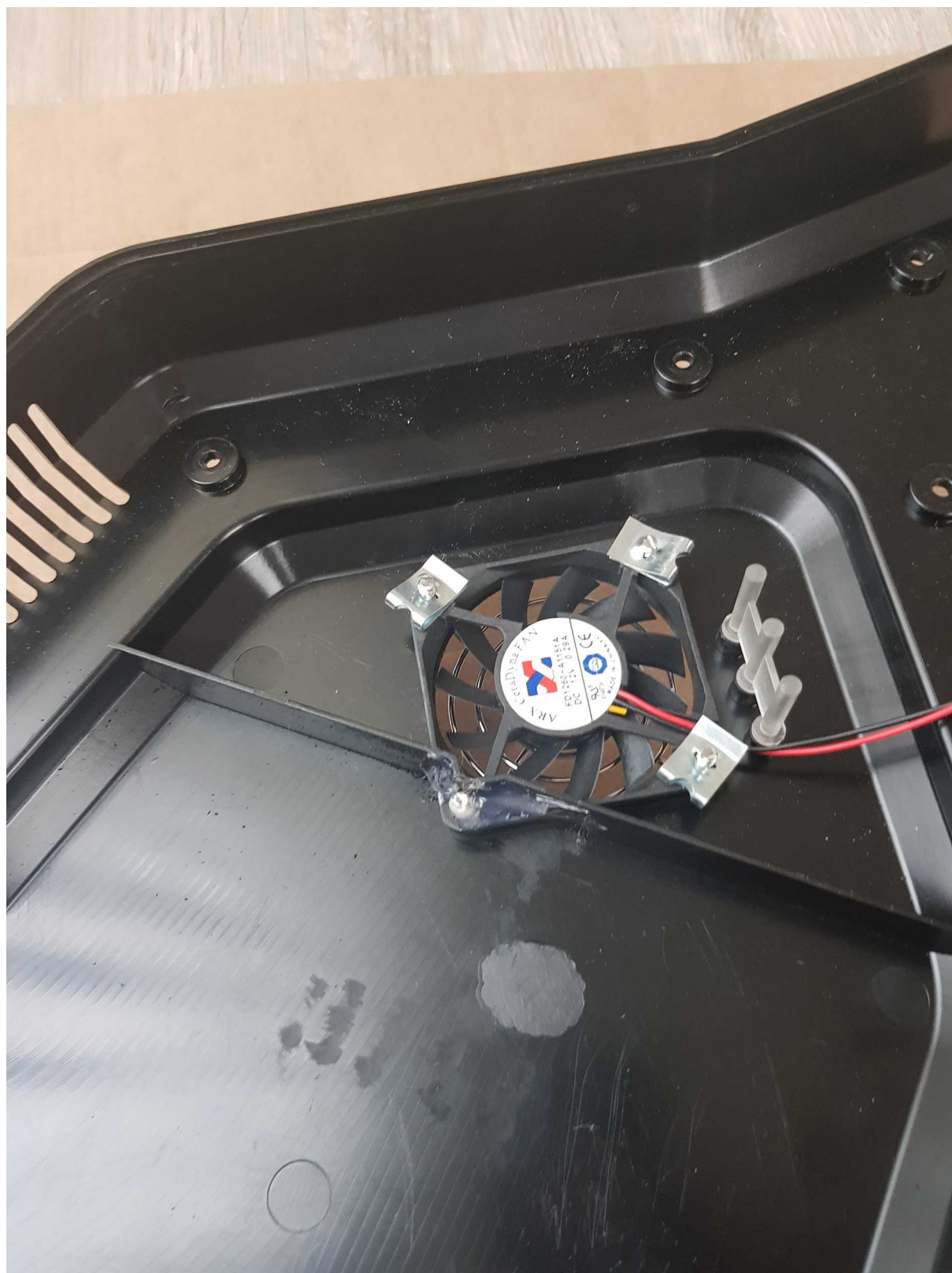






For the 60x60 mm fan on the right side, some cutting of the inside wall is needed.



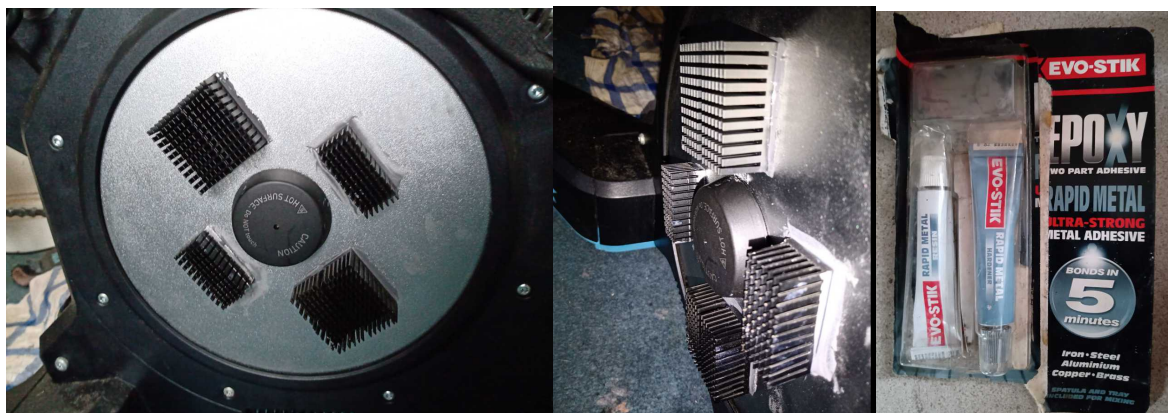






Heat fix without open the device easy and fast.

Problem overheat and lost resistance during ride. Glue 4 small heatsinks on the Flywheel. Glued with 2 part epoxy glue, evostik rapid metall



Chapter Connection:

Ant + dropouts and Bluetooth not showing power data.

7 Ant+ dropped out. Then it re-connected, dropped, re-connect, drop.... Same thing today. Ant+ signal drops as soon as start pedalling. Bluetooth not showing power data at all.

Solution:

“Connected to Tacx App (not utility) on my phone and found you can turn Ant+ off in the trainer. Did this and now connect to PC with Bluetooth every time. Have done a number of rides from 30 mins to 2 hrs and all good. ERG mode also works fine for workouts.”

Loss of Power or Erratic Power

Resistance or power is either missing or varies wildly during the ride.

Recalibrating or resetting the ride does not seem to change the outcome or make matters worse.

Set up: FluxS,
 IPad Air
 Edge 520
 Iphone 8

Ipad is approximately one foot away from Edge520. Ipad Bluetooth connected only to Flux Trainer. Ipad has no Ant+ ability.

Edge 520 (Which is listed as not compatible with the FluxS) Bluetooth connection to phone. Edge also connected to pedal sensor, HRM, Flux via ANT+.

Iphone Bluetooth **5 (important)** which i use to connect Edge and 920XT to Garmin Connect.

After considering the problem for some time the only thing that seemed to connect the problem could be Bluetooth, the WIFI connection to the Ipad which really is only receiving until it sends the end result to Tacx and Strava.

I disconnected the Bluetooth on my phone and viola, everything worked. I just download the data from the Edge after my ride to the phone for Garmin Connect when I turn the Bluetooth back on.

A bit of research indicates there are possible interference issues with the Bluetooth devices. Also Bluetooth 4 and earlier are weak data light versions compared to Bluetooth 5. Bluetooth 5 is a supersized version of Bluetooth transmitting 4 x the distance and I think 4x times the data. This is where I think the issue is. My Garmin Edge was talking to the phone during the ride and the result was a signal or data corruption. I will refine my procedures with each new ride. If anything changes, I will update this section and advise on FB.

My suggestions to others is verify what youve got set up with what, and see if something is competing for the signal.

(14 Dec 2020)

[Problem connecting Flux at Zwift](#) (in this post are more tips how to solve the problem)

Solution:

“Finally I have found out that the problem seems to be on my tablet.

Tested to ride in the Tacx app on my Samsung Galaxy Tab S5 and the resistance worked as it should.

Tested to ride in Zwift on my laptop with an ANT+ antenna connected and the controllable unit also connected so the resistance worked as it should also here.

Finally I installed Zwift on my wifes Samsung Galaxy Tab S2 and also on this unit I could connect to controllable and get the resistance work as it should.”

So it looks like the problem are on my tablet 😞”

Sometimes not Flux is the problem, there could also be a problem between Zwift and the Laptop, Tablet, Phone.....you are using.

Sometimes it's worth a try to use a different device to test connections.

A Laptop from a friend, Iphone instead Android.....

FLUX LED lights and error code: [Garmin support](#)

No power on flux (electrical fault)

Flux does not turn on

Solution: Replace three components on the main board

<https://www.facebook.com/groups/1246355348749602/permalink/3237364222982028/>

ERG-mode not working

After updating the trainer does not work in ERG-mode.

Solution: downgrade software.

Ho

w-to: [How to downgrade Tacx Flux](#)

Software: [Software files to downgrade Tacx Flux](#)

Garmin: [Updating the Software on your Tacx Smart Trainer](#) (NO files)

Chapter Speedsensor

Spinning on Zwift and nothing happens, also at calibration 0 speed is shown in the app.



Speedsensor is soldered and glued. There are pins, so it is not possible to mount it wrong when changing. Name of Sensor [EE-SX1041 Omron](#)

Link to Video will be added.

Chapter Spare parts

Belts

Spareparts for Tacx T2900/S/2
Belt Search for: RB-8PJ813 320J/813PJ
Length:813mm/320J Ribs: 8

Germany:



<https://www.ebay.de/c/1004225538>

<https://www.ebay.de/itm/Keilrippenriemen-8-PJ-813-mm-320-J-Poly-V-Riemen-Keilriemen/124106535124?hash=item1ce55370d4:g:x6AAAOSwTtheX8lg>

<https://keilriemen24.eu/8PJ813-Type-320-J-Keilrippenriemen-Rippenband-Poly-V-Riemen-8-Rippen-Profil-PJ>

<https://www.amazon.de/Top-Industrieteile-Keilrippenriemen-813-320/dp/B06XB29GDQ>

UK:

<https://www.ebay.co.uk/itm/813J8-320J8-Poly-V-Belt-J-Section-With-8-Ribs-813mm-320-Length/253192637746?hash=item3af3750d32:g:iPsAAOSw3AdenyvZ>

https://www.ebay.co.uk/itm/8PJ813-Contitech-Poly-V-Belt-813mm-Long-8-Ribs/193367569792?_trkparms=aid%3D1110006%26algo%3DHOMESPLICE.SIM%26ao%3D1%26asc%3D225114%26meid%3D0db2fd97e75f4cd9964b6b1e8eb5efa2%26pid%3D100623%26rk%3D2%26rkt%3D5%26sd%3D253192637746%26itm%3D193367569792%26pmt%3D1%26noa%3D1%26pg%3D2047675%26algv%3DDefaultOrganic&_trksid=p2047675.c100623.m-1

France:

<https://www.123courroies.com/courroie-section-j-pj/328431-courroie-strie-poly-v-8pj813-optibelt-4014486013122.html>

<https://rodavigo.net/fr/p/courroie-strie-8-pj-ref-optibelt-8-pj-813-rb/1758PJ813>

Czech Republic:

<http://www.remeny-retezy.cz/remeny/ploche-zebrove/pj-2-34-mm/8-pj/remen-viceklinovy-8-pj-813-320-j-optibelt-rb-9006.html>

<https://www.proprumysl.cz/remen-viceklinovy-8-pj-813-320-j-optibelt-rb/>

Ali 6202-2RSexpress Worldwide:

https://de.aliexpress.com/item/1005001320876600.html?spm=a2g0o.productlist.0.0.11496877mRxsUj&algo_pvid=e709e492-6525-4ef7-8707-ced967b25bd4&algo_expid=e709e492-6525-4ef7-8707-ced967b25bd4-1&btsid=0b0a119a16044730556211646ed3ed&ws_ab_test=searchweb0_0,searchweb2_01602_,searchweb201603_

Netherlands:

https://www.techniekwebshop.nl/optibelt-ribbenband-8pj813-lange-levensduur-813-mm.html?fbclid=IwAR2_DXfdskBjQZOS31rCCs-yQi4uPAsvWMoQU0MD9y6raYb-o-oWkZTH504

https://www.btshop.nl/nl/optibelt-rb-8pj/p-G1241019893?fbclid=IwAR0kex9_xDiI452sxsgkoGJIIZ17bbQZLY3foHGhm1xKYwwdfje0Z8DaLR4

Sweden:

https://www.rembutiken.se/flersparsremmar/pj-profil/8-ribbor/flersparsrem-8pj813/?fbclid=IwAR0XcyqsRvetile0_wPsAjtDxD7WD07oZ8PKu9r0jd17kT-mdR66ZUIVFfo

Ireland:

<https://dicksonbearings.ie/>

Bearings

Bearings frame:

1 Piece:



1 Piece: 6002-2RS



s 6200-2Z

Bearings alloy flywheel:

1 Piece 6205-2RS



1 Piece 6002-2RS Not easy to change!! Maybe use a hot air blower to remove it. Otherwise a special tool is needed!!



Original pulley:

2 Piece



Freehub

2 Pieces 6802-2RS



Specialtool needed or try if your freehub nut fits :-) Or try to heat up the thread with hotair blower maybe it's easier to open



Magnets:

8 Pieces 20x5mm

Ferrit like original

[2 50PCS/lot Disk Ferrite Magnet 20x5 mm magnet fridge ferrite magnet ring ferrite magnet for speakers magnet black 20*5 mm 20mm|Magnetic Materials| - AliExpress](#)

Neodyn stronger never tried them

[2/5/10/20 Pcs 20x5 Neodymium Magnet 20mm x 5mm N35 NdFeB Round Super Powerful Strong Permanent Magnetic imanes Disc 20x5|Magnetic Materials| - AliExpress](#)

Speedsensor:

[EE-SX1041 | Omron Gabel-Lichtschränke EE-SX1041, Transistor Ausgang, Durchsteckmontage, 4 Pin | RS Components \(rs-online.com\)](#)

1 Piece: EE-SX1041

EE-SX1041 Omron, Through Hole
Slotted Optical Switch, Transistor
Output



Starlock Washer

[Amazon.de : starlock unterlegscheiben m10](https://www.amazon.de/starlock-unterlegscheiben-m10)



Chapter Other:

Returning flux trainer to garmin

Things to remember