



TANGE SEIKI

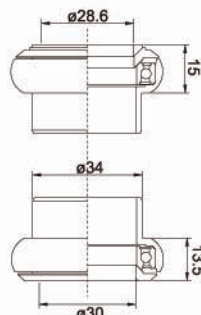
Page 02.	Techno Glide Classic / Techno Glide J-6 / Techno Glide Carbon / Techno Glide DH
Page 03.	Techno Glide J-2 / Techno Glide FSD / Techno Glide DL / Techno Glide DLC / Techno Glide ES2
Page 04.	Techno Glide J-27 / Techno Glide J-27iL / Techno Glide DX4 / Techno Glide STR / Techno Glide 1.5CB
Page 05.	Techno Glide ZSI-47 / Techno Glide ZSI-50 / Techno Glide EZS
Page 06.	Techno Glide ZS2 / Techno Glide ZS2CLT / Techno Glide ZS2iL / Techno Glide ZSL / Techno Glide ZSR
Page 07.	Techno Glide IS2 / Techno Glide IS2CLT / Techno Glide ISL / Techno Glide IS24iL / Techno Glide IS24
Page 08.	Techno Glide IS23 / Techno Glide EZI / Techno Glide Thunder / Techno Glide Fatty MX
Page 09.	Levin Alloy 1500 / Vantage DL / Vantage / Levin / Levin CDS
Page 10.	Falcon 270c / Falcon 250c / Comet / Passage DX / Passage
Page 11.	TG-235 / FS / AP-2 / BB220SB / BB220ST / MX2 / AW27
Page 12.	LN-9100 / LN-7610SP / LN-7922 / LN-3922 / LNX-7611
Page 13.	Ball retainers & Cartridge bearings / Anchor capset / High Column spacers / Light Alloy crown cone

Classic Ultimate Durability and Performance

The Original and the Ultimate headset from Tange Seiki

- CNC precision machined to very tight tolerances for ultimate performance and wear.
- A7075-T6 super light alloy with **fully sealed stainless steel cartridge bearing** and crown race.
- Threaded and threadless models. 1" and 1-1/8" and 1-1/4". Colors: Black, Silver, Blue, Red

Technical Specification	Size	Model#	L1	L2	Stack height	Weight
Techno Glide Classic	Threadless 1"	TG32	13.0	12.0	25.0 mm	92.0 g
Techno Glide Classic	Threaded 1"	TG32D	22.0	12.0	34.0 mm	101.0 g
Techno Glide Classic	Threadless 1-1/8"	TG36	15.0	13.5	28.5 mm	97.0 g
Techno Glide Classic	Threaded 1-1/8"	TG36D	23.3	13.5	36.8 mm	105.0 g
Techno Glide Classic	Threadless 1-1/4"	TG40	15.5	14.5	30.0 mm	102.0 g



J-6 Ultimate Durability and Performance

Techno Glide Quality with Tange's EZ system and Long insertion

- CNC precision machined to very tight tolerances for ultimate performance and wear.
- A7075-T6 super light alloy with **fully sealed stainless steel cartridge bearing** and crown race.
- Tange Seiki exclusive **EZ system** on upper unit. Long Insertion design protects against head tube deformation and more durable wear.
- Threadless only. 1-1/8" and 1". Color: Anodized Black

Technical Specification	Size	Model#	L1	L2	Stack height	Weight
Techno Glide J-6	1"	TG32J6	14.5	12.5	27.0 mm	107.0 g
Techno Glide J-6	1-1/8"	TG36J6	16.5	14.0	30.5 mm	112.0 g

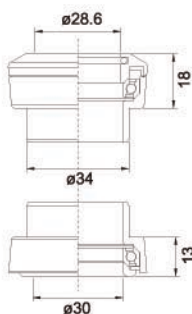


Carbon Ultimate Durability and Performance

What everybody's been waiting for. . .

- CNC precision machined high impact carbon top cover, and carbon wrapped duraluminum alloy cups.
- Tange Seiki original sized cartridge bearing.
- Threadless only. 1-1/8" only available.

Technical Specification	Size	Model#	L1	L2	Stack height	Weight
Techno Glide Carbon	1-1/8"	TG36Co	18.0	13.0	31.0 mm	100.5 g



DH Ultimate Durability and Performance

The Ultimate Downhill/Extreme Headset

- CNC precision machined **heat-treated stainless steel cups and crown race**.
- Tange Seiki **Techno Glide stainless steel, fully sealed bearing**.
- Tange Seiki exclusive **EZ system** on upper unit. Long Insertion design protects against head tube deformation and more durable wear.
- Threadless only. 1-1/8" only available. Color: Nickel coating

Technical Specification	Size	Model#	L1	L2	Stack height	Weight
Techno Glide DH	1-1/8"	TG36DH	16.5	14.0	30.5 mm	190.5 g



J-2 Light weight, cartridge bearings, EZ system and Long Insertion

- CNC precision machined light alloy with super smooth Tange Seiki 4T5 fully sealed cartridge bearing.
- Tange Seiki exclusive **EZ system** on upper unit.
- **Long Insertion** design protects against head tube deformation
- and more durable wear.
- Threadless only. 1-1/8" and 1". Colors: Black, Silver

Technical Specification	Size	Model#	L1	L2	Stack height	Weight
Techno Glide J-2	1"	TG32J2	13.5	11.5	25.0 mm	72.0 g
Techno Glide J-2	1-1/8"	TG36J2	14.0	11.5	25.5 mm	88.5 g



FSD Big Hit Cr-Mo Strength Headset

- Heat-treated Cr-Mo crown cone and Upper/ lower cups
- **Oversized cartridge bearing** on lower unit for increased durability and bigger hits.
- **Standard size cartridge bearing** on upper unit for weight savings
- Tange Seiki exclusive designed **EZ system** on upper unit
- Tange's **long insertion design** protects against head tube deformation
- Only threadless type and 1-1/8" size available. Color: Nickel coating

Technical Specification	Size	Model#	L1	L2	Stack height	Weight
Techno Glide FSD	1-1/8"	TG36FSD	17.0	15.6	32.5 mm	192.5 g



DL The lightest for Road bikes

- Lightweight and strong duraluminum alloy construction
- **Heat-treated Cr-Mo ball races**
- Three sizes available (1" and 1-1/8" and 1-1/4")
- Color variation; Silver, Black, Blue, Red

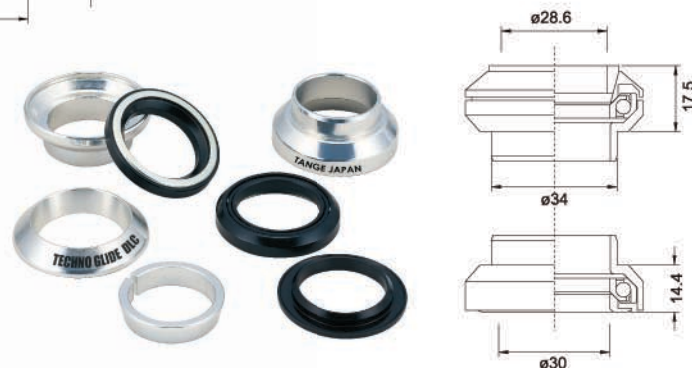
Technical Specification	Size	Model#	L1	L2	Stack height	Weight
Techno Glide DL	1"	TG32DL	13.2	11.7	24.9 mm	74.0 g
Techno Glide DL	1-1/8"	TG36DL	14.8	11.6	26.4 mm	95.0 g
Techno Glide DL	1-1/4"	TG40DL	17.4	11.6	29.0 mm	116.0 g



DLC

- Lightweight and strong duraluminum alloy construction
- Cartridge bearing system
- Color variation; Silver, Black, Blue, Red

Technical Specification	Size	Model#	L1	L2	Stack height	Weight
Techno Glide DL	1"	TG32DLC	17.2	13.8	31.0 mm	102.0 g
Techno Glide DL	1-1/8"	TG36DLC	17.5	14.4	31.9 mm	111.0 g



EZ2 Tange Seiki EZ system for "Classic" Type Headset

- Tange Seiki exclusive designed **EZ system** on upper/ lower unit
- Lightweight and strong duraluminum alloy construction
- Tange Seiki original sized **cartridge bearing**
- Tange Seiki original bluish gray color

Technical Specification	Size	Model#	L1	L2	Stack height	Weight
Techno Glide EZ2	1-1/8"	TG36EZ2	16.5	11.7	28.8 mm	91.0 g



J-27 Cartridge Bearing Type

- Lightweight and strong Duraluminum light alloy construction
- Fully Sealed Mechanism
- Tange Seiki Original sized 4T5 Cartridge Bearing
- Only 1-1/8" size available
- Silver or Black anodizing color available

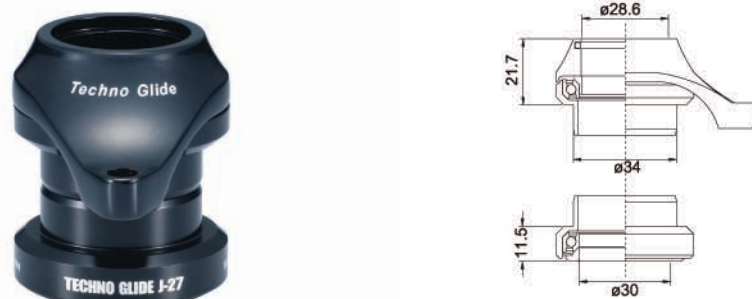
Technical Specification	Size	Model#	L1	L2	Stack height	Weight
Techno Glide J-27	1-1/8"	TG36J27	13.8	11.5	25.3 mm	81.0 g



J-27iL 38mm pitch cable hanger & Cartridge Bearing Type

- Lightweight and strong Duraluminum light alloy construction
- Fully Sealed Mechanism
- Tange Seiki Original sized 4T5 Cartridge Bearing
- Only 1-1/8" size available
- Silver or Black anodizing color available

Technical Specification	Size	Model#	L1	L2	Stack height	Weight
Techno Glide J-27iL	1-1/8"	TG36J27iL	21.7	11.5	33.2 mm	92.0 g



DX4

- Lightweight and strong Duraluminum alloy construction
- Fully Sealed Mechanism
- Only 1-1/8" size available
- Silver or Black anodizing color available

Technical Specification	Size	Model#	L1	L2	Stack height	Weight
Techno Glide DX4	1-1/8"	TG36DX4	13.9	11.6	25.5 mm	100.0 g



STR Reversible Type headset

- High-tension steel
- Double Sealed Mechanism
- Two sizes available (1" and 1-1/8")
- Black EDP or Satin color available

Technical Specification	Size	Model#	L1	L2	Stack height	Weight
Techno Glide STR	1"	TG32STR	12.3	11.3	23.6 mm	110.0 g
Techno Glide STR	1-1/8"	TG36STR	12.1	11.3	23.4 mm	124.0 g



1.5CB Ride Large

- OnePointFive size for the Most Extreme riders. Lightweight yet strong duraluminum alloy construction. Tange Seiki specially designed **cartridge bearings**. Fully sealed mechanism. **Long lower cup insertion** design protects against head tube deformation and more durable wear.
- Threadless and 1.5" size only. Color: Black

Technical Specification	Size	Model#	L1	L2	Stack height	Weight
Techno Glide 1.5CB	1-1/2"	TG46CB	15.0	14.5	29.5 mm	200.0 g



ZSI-47 Zero Stack and Fully Integrated in One

- The NEW ZSI combines the best of the Zero Stack system with the fully integrated system by combining the cup with the cartridge bearing. Gives you the sleek, clean look and weight savings of the integrated system with the protection of the Zero Stack system.
- Fits 41 mm x 47 mm head tubes. Lightweight yet strong duraluminum alloy construction. Tange Seiki exclusive **EZ system** on upper unit.
- Tange Seiki specially designed **ZSI adapter cups**.
- Threadless only. 1-1/8" size. Color: Black, Silver

Technical Specification	Size	Model#	L1	L2	Stack height	Weight
Techno Glide ZSI-47	1-1/8"	TG36ZSI47	6.7	0.5	7.3 mm	65.0 g



ZSI-50 Fits Current 1-1/8" Zero Stack system but WITHOUT the Cups

- The same features as the ZSI-47 headset but designed to fit frames using the current 1-1/8" Zero Stack headsets.
- Inside headtube diameter 44 mm. Outside headtube diameter 50 mm.
- Lightweight yet strong duraluminum alloy construction.
- Tange Seiki exclusive **EZ system** on upper unit.
- Tange Seiki specially designed ZSI-50 adapter cups.
- Threadless only. 1-1/8" size. Color: Black, Silver

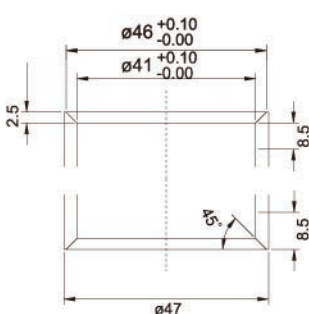
Technical Specification	Size	Model#	L1	L2	Stack height	Weight
Techno Glide ZSI-50	1-1/8"	TG36ZSI50	6.8	0.5	7.3 mm	95.0 g



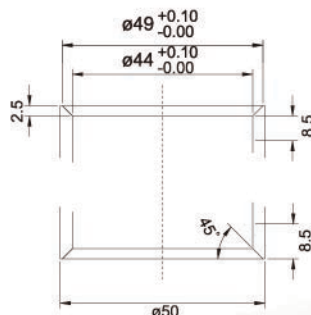
EZS Easy Zero Stack system with Only Two Parts

The Tange Seiki EZ system combines all assembly parts into two pre-assembled units - one upper and one lower. No lost parts. Always correctly assembled. EZ to install. The EZS Zero Stack is made of lightweight yet strong duraluminum alloy construction. Tange Seiki specially designed **EZ cartridge bearings**. Threadless only. 1-1/8" size. Color: Bluish Gray, Black, Silver

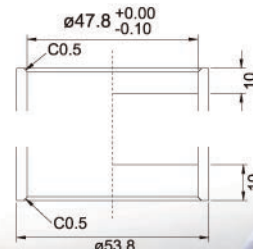
Technical Specification	Size	Model#	L1	L2	Stack height	Weight
Techno Glide EZS	1-1/8"	TG36EZS	9.7	2.5	12.2 mm	95.0 g



ZSI-47 Head tube



ZSI-50 Head tube

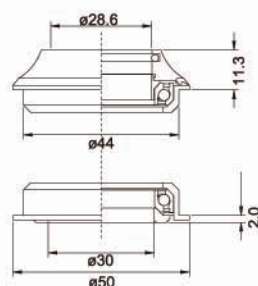


EZS Head tube

ZS2 ZS system comes from Tange Seiki, US Patent 6126323

- Tange Seiki designed **EZ system** on upper unit
- Tange Seiki original designed ZS system
- **Fully Sealed Mechanism**
- Lightweight and strong duraluminum alloy construction
- Tange Seiki original size **4T5 cartridge bearing**

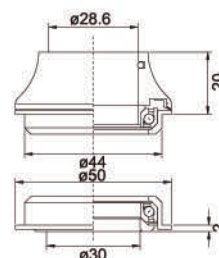
Technical Specification	Size	Model#	L1	L2	Stack height	Weight
Techno Glide ZS2	1"	TG32ZS2	11.0	2.0	13.0 mm	75.0 g
Techno Glide ZS2	1-1/8"	TG36ZS2	11.3	2.2	13.5 mm	84.0 g



ZS2CLT ZS system with Carbon Top

- High impact Carbon Tail Top cover
- Tange Seiki original designed **ZS system**
- **Fully Sealed Mechanism**
- Lightweight and strong duraluminum alloy construction
- Tange Seiki original size **4T5 cartridge bearing**

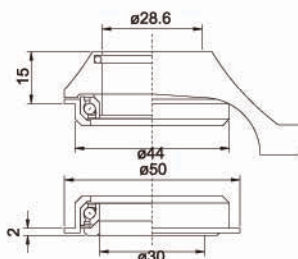
Technical Specification	Size	Model#	L1	L2	Stack height	Weight
Techno Glide ZS2CLT	1-1/8"	TG36ZS2CLT	15,20,25	2.0	17,27 mm	75.0 g



ZS2iL ZS system with Cable Hanger

- Duraluminum light alloy top cover with 38mm pitched cable hanger
- Tange Seiki original designed **ZS system**
- **Fully Sealed Mechanism**
- Lightweight and strong duraluminum alloy construction
- Tange Seiki original size **4T5 cartridge bearing**

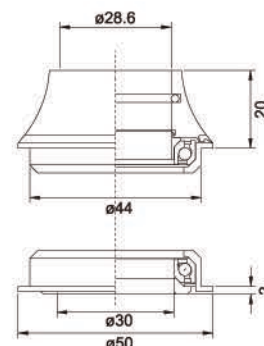
Technical Specification	Size	Model#	L1	L2	Stack height	Weight
Techno Glide ZS2iL	1-1/8"	TG36ZSIL	15.0	2.0	17.0 mm	102.0 g



ZSL

- Tange Seiki original designed **ZS system with Tall Top cover**
- **Fully Sealed Mechanism**
- Lightweight and strong duraluminum alloy construction
- Tange Seiki original size **4T5 cartridge bearing**

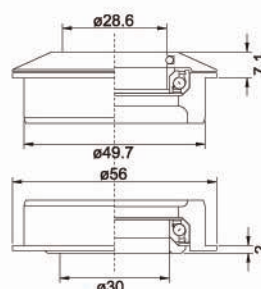
Technical Specification	Size	Model#	L1	L2	Stack height	Weight
Techno Glide ZSL	1"	TG32ZSL	15,20,25	2.0	17,22,27 mm	80.0 g
Techno Glide ZSL	1-1/8"	TG36ZSL	15,20,25	2.0	17,22,27 mm	89.0 g



ZSR OnePointFive Zero Stack for 1-1/8" forks

- Fits OnePointFive size headtubes and 1-1/8" forks with the **Tange Seiki patented Zero Stack design**. Lightweight yet strong duraluminum alloy construction. Tange Seiki specially designed **4T5 cartridge bearings**. Fully sealed system. **Long lower cup insertion** design protects against head tube deformation and more durable wear. Threadless only. 1.5" to 1-1/8". Color: Black

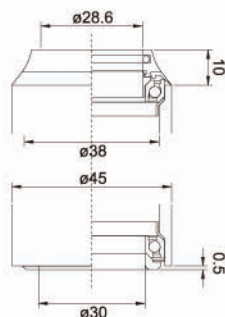
Technical Specification	Size	model#	L1	L2	Stack height	Weight
Techno Glide ZSR	1.5"Headtube/ 1-1/8"Steerer	TG1.5ZSR	7.1	2.0	9.1 mm	156.0 g



IS2 Fully Integrated System

- Tange Seiki designed **EZ system** on upper unit
- Lightweight and strong duraluminum alloy construction
- Tange Seiki original sized **4T5 cartridge bearing**
- **Inner adapter rings** to avoid headtube deformation
- Silver or Black anodized color available

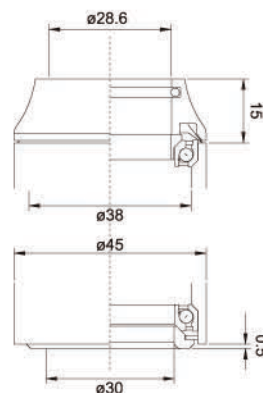
Technical Specification	Size	Model#	L1	L2	Stack height	Weight
Techno Glide IS2	1"	TG32IS2	10.0	0.5	10.5 mm	53.7 g
Techno Glide IS2	1-1/8"	TG36IS2	10.0	0.5	10.5 mm	61.7 g



IS2CLT Fully Integrated System

- High impact Carbon top cover
- Tange Seiki original sized **4T5 cartridge bearing**
- **Inner adapter rings** to avoid headtube deformation
- **Fully Sealed Mechanism**

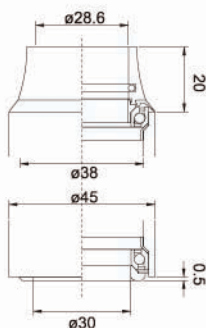
Technical Specification	Size	Model#	L1	L2	Stack height	Weight
Techno Glide IS2CLT	1-1/8"	TG36IS2CLT	10,15,25	0.5	10.5,15.5,25.5 mm	60.0 g



ISL Fully Integrated System

- Lightweight and strong duraluminum alloy construction
- Tange Seiki original sized **4T5 cartridge bearing**
- **Inner adapter rings** to avoid headtube deformation
- **Fully Sealed Mechanism**
- Silver or Black anodized color available

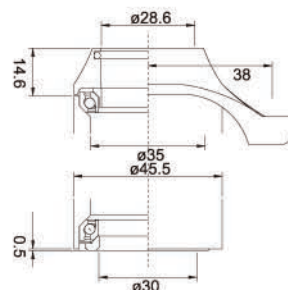
Technical Specification	Size	Model#	L1	L2	Stack height	Weight
Techno Glide ISL	1-1/8"	TG36ISL	17,22,27	0.5	17.5,22.5,27.5 mm	71.0 g



IS24iL Fully Integrated System

- Duraluminum light alloy top cover with 38mm pitched cable hanger
- Lightweight and strong Duraluminum alloy construction
- "Campy" size Cartridge Bearing for durability
- Fully Sealed Mechanism
- Only 1-1/8" size available
- Silver or Black anodized color available

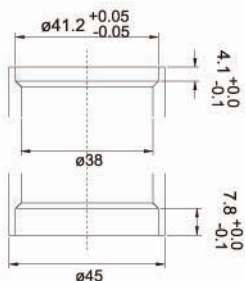
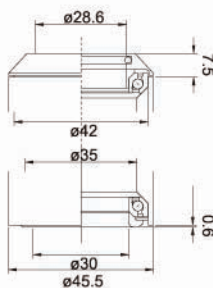
Technical Specification	Size	Model#	L1	L2	Stack height	Weight
Techno Glide IS24iL	1-1/8"	TG36IS24iL	14.6	0.5	15.1 mm	80.0 g



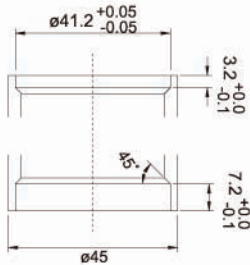
IS24 Fully Integrated System

- Lightweight and strong Duraluminum alloy construction
- "Campy" size Cartridge Bearing for durability
- Fully Sealed Mechanism
- Only 1-1/8" size available
- Silver or Black anodized color available

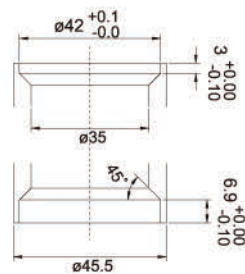
Technical Specification	Size	Model#	L1	L2	Stack height	Weight
Techno Glide IS24	1-1/8"	TG36IS24	7.5	0.6	8.1 mm	69.5 g



IS2 Head tube



IS2 Head tube wo/Adapter ring



IS24 Head tube

IS23 Fully Integrated System

- Lightweight and strong Duraluminum alloy construction
- Larger sized Cartridge Bearing for durability
- Fully Sealed Mechanism
- Only 1-1/8" size available
- Silver or Black anodized color available

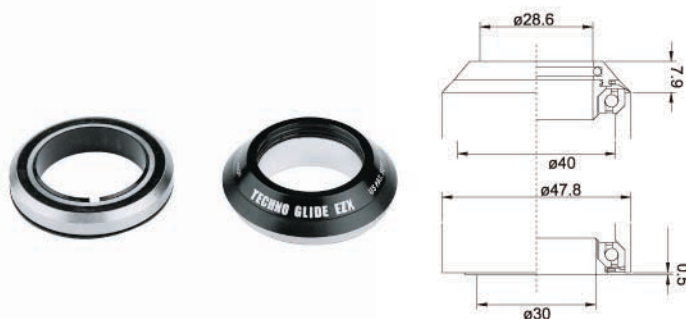
Technical Specification	Size	Model#	L1	L2	Stack height	Weight
Techno Glide IS23	1-1/8"	TG36IS23	7.5	2.0	9.5 mm	75.0 g



EZI Tange Seiki EZ system for Integrated headset

- The Tange Seiki EZ system combines all assembly parts into **two pre-assembled units** - one upper and one lower. No lost parts. Always correctly assembled. EZ to install. The EZI is made of lightweight yet strong duraluminum alloy construction. Tange Seiki specially designed **EZ cartridge bearings**.
- Threadless only. 1-1/8" size. Color: Bluish Gray, Black, Silver

Technical Specification	Size	Model#	L1	L2	Stack height	Weight
Techno Glide EZI	1-1/8"	TG36EZI	7.9	0.5	10.3 mm	72.0 g

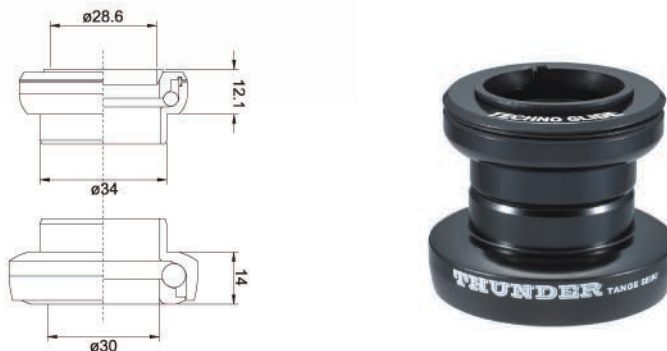


Thunder

Super strong and durable for hard jumper

- Fatty wall-thickness Chromoly lower cup & bigger sized lower balls
- Fully Sealed Mechanism
- Only 1-1/8" size available
- Black EDP or Satin color available

Technical Specification	Size	Model#	L1	L2	Stack height	Weight
Techno Glide Thunder	1-1/8"	TG36TDR	12.1	14.0	26.1 mm	155.0 g

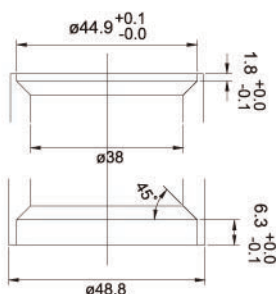


Fatty MX

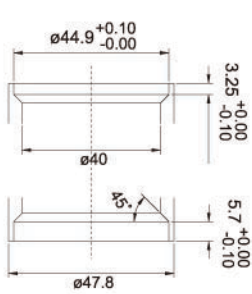
Strong and durable for hard jumper

- Fatty wall-thickness Chromoly lower cup
- Fully Sealed Mechanism
- Only 1-1/8" size available
- Black EDP or Satin color available

Technical Specification	Size	Model#	L1	L2	Stack height	Weight
Techno Glide Fatty MX2	1-1/8"	TG36FMX2	11.5	12.8	24.9 mm	160.0 g



IS23 Head tube



EZI Head tube

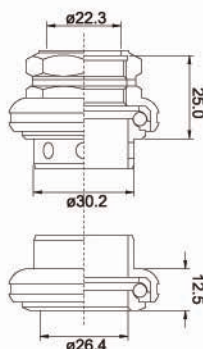


Oliver Weidemann / Continental bicycle

LEVIN Alloy 1500 NJS approved model

- Lightweight and strong Duraluminum alloy construction
- Heat-treated Chromoly ball race
- Super stone polishing on every ball race
- Drilled non-structural areas for reduce weight
- Fully Sealed Mechanism
- Silver or Black anodizing color available

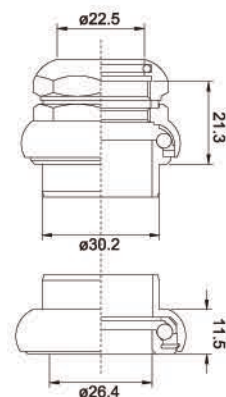
Technical Specification	Size	Model#	L1	L2	Stack height	Weight
Levin alloy 1500	Threaded 1"	LV-1500	25.0	12.5	37.5 mm	121.0 g



Vantage DL

- CNC Machined A7075-T6 Light alloy
- Triple Sealed Mechanism
- Lightweight and strong Duraluminum alloy construction
- Heat-treated chromoly ball race
- Titanium, Silver or Black anodized color available
- Three sizes available (1" and 1-1/8" and 1-1/4")

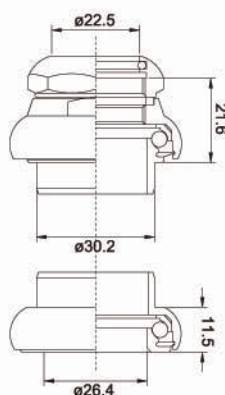
Technical Specification		Size	Model#	L1	L2	Stack height	Weight
Vantage DL	Threaded	1"	VR-254	21.3	11.5	32.8 mm	90.0 g
Vantage DL	Threaded	1-1/8"	VR-286	21.7	11.5	33.2 mm	98.0 g
Vantage DL	Threaded	1-1/4"	VR-318	23.0	11.6	34.6 mm	103.0 g



Vantage DL NJS approved model

- CNC Machined A7075-T6 Light alloy
- Triple Sealed Mechanism
- Lightweight and strong duraluminum alloy construction
- Heat-treated chromoly ball race
- Silver or Black anodized color available

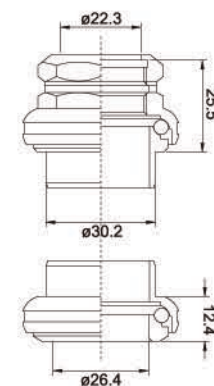
Technical Specification		Size	Model#	L1	L2	Stack height	Weight
Vantage	Threaded	1"	AV-505	21.6	11.5	33.1 mm	95.5 g



LEVIN NJS approved model

- Tange Seiki Traditional Headset
- CNC Machined Fully Chromoly construction
- Super stone polishing on every ball race

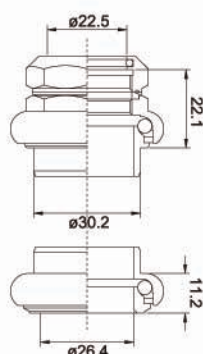
Technical Specification	Size	Model#	L1	L2	Stack height	Weight	
LEVIN	Threaded	1"	LV-11	25.5	12.4	38.2 mm	155.0 g



LEVIN-CDS

- CNC Machined Fully Chromoly construction
- Super stone polishing on every ball race
- Fully Sealed Mechanism

Technical Specification		Size	Model#	L1	L2	Stack height	Weight
LEVIN-CDS	Threaded	1"	LV-CDS	22.1	11.2	33.3 mm	145.0 g



Falcon FL270C Cartridge Bearing Type

- CNC Machined strong duraluminum light alloy
- Fully Sealed Mechanism
- Tange Seiki Original 4T5 Cartridge Bearing
- Only 1-1/8" size available
- Silver or Black anodized color available

Technical Specification	Size	Model#	L1	L2	Stack height	Weight
Falcon FL270C Threaded	1-1/8"	FL270C	23.0	11.5	24.5 mm	95.0 g

Falcon FL250C Cartridge Bearing Type

- CNC Machined strong duraluminum light alloy
- Fully Sealed Mechanism
- Tange Seiki Original 4T5 Cartridge Bearing
- Only 1" size available
- Silver or Black anodized color available

Technical Specification	Size	Model#	L1	L2	Stack height	Weight	
Falcon FL250C	Threaded	1"	FL250C	24.0	11.3	35.3 mm	93.0 g

Comet Cartridge Bearing Type

Two sizes (1" and 1-1/8"), Three models (DL, AL, ST) available

DL

- Lightweight and strong Duraluminum alloy construction
- Fully Sealed Mechanism
- Silver or Black anodized color available

AL

- Lightweight and strong chromoly construction
- Fully Sealed Mechanism
- Silver or Black anodized color available

ST

- High-tension steel
- Fully Sealed Mechanism
- Satin finish only

Technical Specification		Size	Model#	L1	L2	Stack height
Comet	Threaded	1"	CT32-DL, AL, ST	25.9	13.2	39.1 mm
Comet	Threaded	1-1/8"	CT36-DL, AL, ST	24.3	12.5	36.8 mm

Passage DX

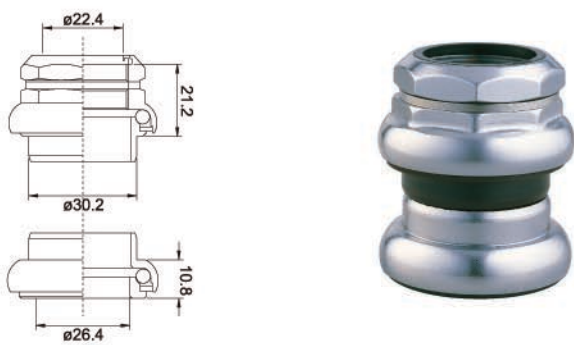
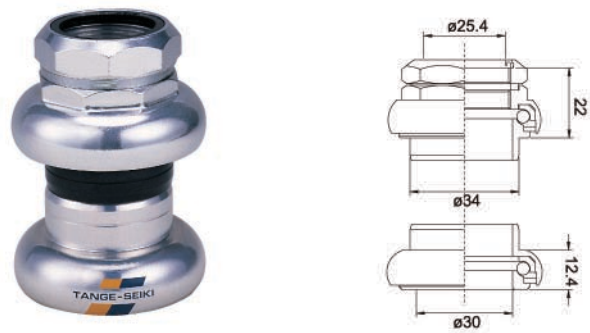
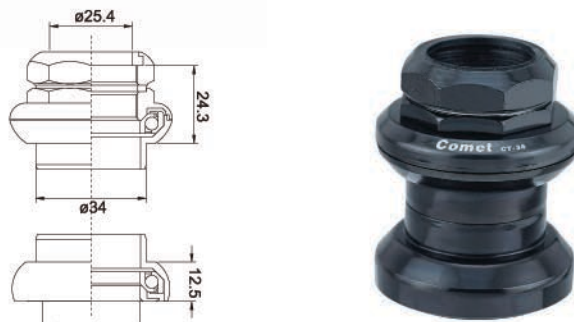
- Triple Sealed Mechanism
- Lightweight and strong Duraluminum alloy construction
- Heat-treated high-tension steel ball races
- Two sizes available (1" and 1-1/8")
- Silver or Black anodized color available

Technical Specification		Size	Model#	L1	L2	Stack height	Weight
Passage DX	Threaded	1"	PA-32DX	23.0	12.1	35.1 mm	108.0 g
Passage DX	Threaded	1-1/8"	PA-36DX	22.0	12.4	34.4 mm	115.0 g

Passage

- Triple Sealed Mechanism
- High-tension steel
- Two sizes available (1" and 1-1/8")
- Satin, Black EDP and C.P. color available

Technical Specification		Size	Model#	L1	L2	Stack height	Weight
Passage	Threaded	1"	PA-32ST	20.3	10.3	30.3 mm	156.0 g
Passage	Threaded	1-1/8"	PA-36ST	21.2	10.8	32.0 mm	175.0 g



TG-235

- High-tension steel
- C.P. or Black EDP color available

Technical Specification	Size	Model#	L1	L2	Stack height	Weight
TG-235	Threaded	1"	TG-235	23.7	11.0	32.7 mm 130.0 g

FS

- High-tension steel
- colorful steel cover and economical inner structure
- Black or White color available

Technical Specification	Size	Model#	L1	L2	Stack height	Weight
FS	Threaded	1"	FS	23.9	11.0	34.9 mm 145.0 g

AP-2

- High-tension steel
- High impact resin top cone cover
- Fully Sealed Mechanism
- Only Black color available

Technical Specification	Size	Model#	L1	L2	Stack height	Weight
AP-2	Threaded	1-1/8"	AP-2	23.0	11.5	33.5 mm 132.0 g

For BMX & Freestyle

MX-2

- Strong duraluminum Cr-Mo cups and cone
- C.P. or Black C.P. color available

Technical Specification	Size	Model#	L1	L2	Stack height
MX-2	Ø21.15, Ø32.7, Ø26.4	MX-2	28.2	11.1	39.3 mm

AW-27

- High-tension steel
- C.P. or Black C.P. color available

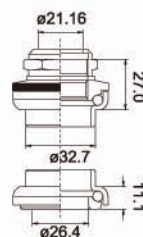
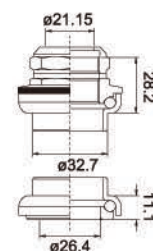
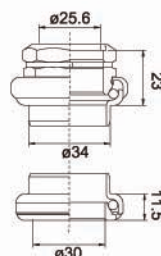
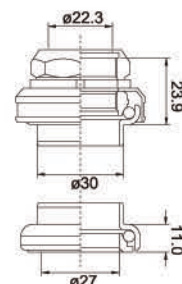
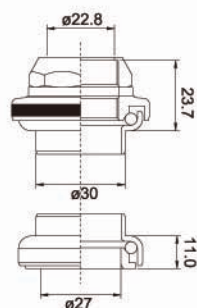
Technical Specification	Size	Model#	L1	L2	Stack height
AW-27	Ø21.15, Ø32.7, Ø26.4	AW-27	27.0	11.1	38.1 mm

BB220SB One piece Crank Type Bottom Bracket Set

- Fully CNC machined heat-treated steel cups and cones
- Tange Seiki original sized cartridge bearing
- Two threading type (24T or 28T) available

BB220ST One piece Crank Type Bottom Bracket Set

- Two kinds of threading (24T or 28T) available
- C.P. or UCP color available
- Set of 8 pcs



LN-9100

- Fully CNC machined **Titanium hollow axle**.
- CNC machined light alloy cups and body
- Two sizes body (for 68 mm shell and 73 mm shell) and every size spindle available



LN-7610SP

- Fully CNC machined Cr-Mo hollow **ISIS spline axle**
- CNC machined light alloy cups and body
- 108mm;113mm;118 mm axle length for 68 mm and 73 mm shell width



LN-7922

- Forged Steel Solid Spindle
- Light alloy body and cups
- 73 mm or 68 mm shell width, and every sizes spindle available



LN-3922

- Forged Steel Satin color Solid Spindle
- Steel CP body and CP cups
- 73 mm or 68 mm shell width, and every sizes spindle available



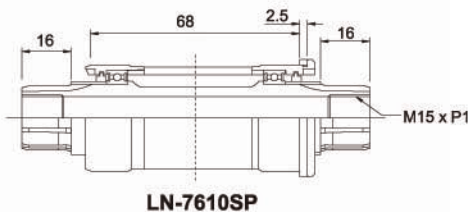
LN-7911

- CNC machined light alloy cups and body
- For X-type crank set, and 73mm or 68mm shell width

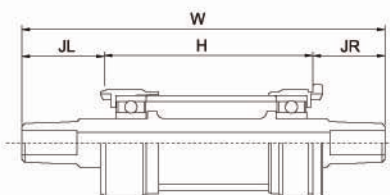


Cartridge BB Chart

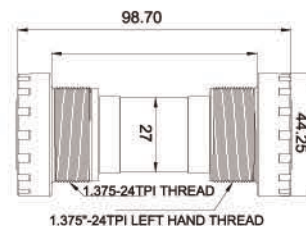
Model Name	H	W	JR	JL
LN-9100 LN-7922 LN-3922 LN-3912	68	103	18	17
	68	107	20.5	18.5
	68	111	20.5	22.5
	68	113.5	23	22.5
	68	115	23.5	23.5
	68	116	25	23
	68	118	25	25
	68	119	26	25
	68	122	28	26
	68	127	30.5	28.5
	73	107	18	16
	73	111	18	20
	73	113.5	20.5	20
	73	115	21	21
	73	116	22.5	20.5
	73	118	22.5	22.5
	73	122	25.5	23.5
	73	127	28	26



LN-7610SP



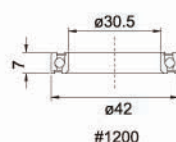
LN-9100, 7922, 3922



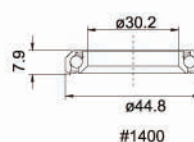
LN-7911

Ball Retainers & Cartridge Bearings

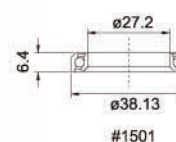
MODEL	DESCRIPTION
#300	5/32"x 20 Ball retainer for 1" sized headset
#350	5/32"x 16 Ball retainer for 1" sized headset
#375	1/4"x 11 Ball retainer for Bottom bracket set
#380	1/4"x 9 Ball retainer for Bottom bracket set
#500	3/16"x 15 Ball retainer for BMX headset
#501	3/16"x 18 Ball retainer for BMX headset
#550	5/16"x 9 Ball retainer for BMX Bottom bracket set
#551	5/15"x 12 Ball retainer for BMX Bottom bracket set
#600	1/8"x 18 Ball retainer for Vantage DL headset
#700	5/32"x 20 Ball retainer for Vantage 1" headset
#800	5/32"x 22 Ball retainer for 1-1/8" sized headset
#900	5/32"x 22 Ball retainer for 1-1/4" sized headset
#1200	Stainless steel bearing for Techno Glide headset
#1400	Cartridge Bearing Larger size (OD=45) for headset
#1501	Cartridge Bearing for 1" sized headset
#1508	Cartridge Bearing for 1-1/8" sized headset
#1528	Cartridge Bearing for 1-1/8" sized headset (44.8 X 31.4 X 6.3)
#1538	Cartridge Bearing for 1-1/8" sized headset (41.9 X 30.2 X 6.3)
#1550	Cartridge Bearing for 1.5" sized headset
#1608	Cartridge Bearing for 1-1/8" sized headset (44.6 X 30.2 X 6.7)



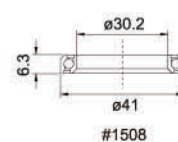
#1200



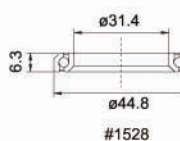
#1400



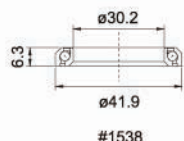
#1501



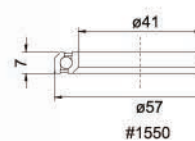
#1508



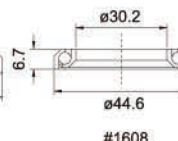
#1528



#1538



#1550



#1608

Anchor Capset



Light Alloy Crown Cone



High Column Spacers

- Carbon, Light alloy or Steel available
- For 1", 1-1/8", 1-1/4" and 1-1/2"
- Every length available





Oliver Weidemann / Commencal bicycle

TANGE SEIKI CO.,LTD.

1-1-26, Kurumano-cho Nishi, Sakai-ku, Sakai, Osaka,
Japan 590-0940
TEL:+81-72-224-9990
FAX:+81-72-224-9991

TANGE SEIKI TAICHUNG CO.,LTD.

No.421-2 Fuya Rd., Xitun District, Taichung City 407,
Taiwan (R.O.C.)
TEL:+886-4-2463-2785
FAX:+886-4-2463-2890

TANGE SEIKI SHENZHEN CO.,LTD.

No. 141, Yin Tai Rd., Dalang St., Baoan District, Shenzhen,
Guangdong, China
TEL:+86-755-27742140
FAX:+86-755-27708372

TANGE SEIKI NINGPO CO.,LTD.

Kan Dun Industrial Estate, No.111, Lian Fa Rd., Kan Dun St.,
Cixi, Zhejiang, China
TEL:+86-574-63285866
FAX:+86-574-63286886

European Sales and Service

Active Sports Products, sl

Av. Maresme 58, 17257 Torroella de Montgrí, Spain
TEL:+34-972-75-0030
FAX:+34-972-75-2125

Japanese Sales and Service

Tokyo San-esu Co.,Ltd.

3-7-1, Ueno Taito-ku, Tokyo, Japan 110-0005
TEL:+81-3-3834-2041
FAX:+81-3-3836-9290

<http://www.tangeseiki.com>